

This form is intended to fulfill the requirements of Chapter A-E7.08 (3)(a) thru (l) U.S. Public Land Survey Monument Location Record, Wisconsin Administrative Code. Use the reverse side of form for continuation.

U.S. PUBLIC LAND SURVEY MONUMENT LOCATION RECORD

USPLS CORNER: WEST 1/4 SECTION: 21 TOWNSHIP: 39 NORTH RANGE: 10 EAST
 NAME OF WATERWAY FOR M.C. CORNER : N/A SECTION LINE: N/A
 (CITY)(VILLAGE)(TOWN) OF: SUGAR CAMP COUNTY OF: ONEIDA

Description of monument found or placed and all other evidence used as the basis for monument location; including monuments and measurements required if the corner location was reestablished by lost corner proportionate methods. Also indicate name of the original surveyor, original survey date and the corner monument, bearing trees, witness or other reference monuments established, including measured bearing and distance ties, from available survey records.

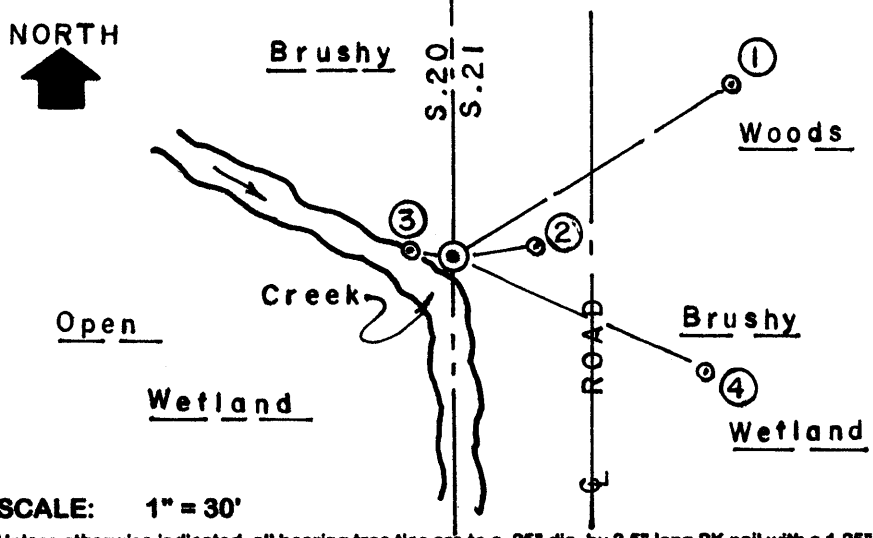
Found a very unstable old 1.5" dia. iron pipe with a 3" square by 1/4" steel plate cap stamped by Ripco in 1953, but could not find their noted BTs. I carefully removed the old iron pipe and drove a standard 2" dia. by 30" long aluminum pipe monument with stamped Oneida County cap 3" above grade into the plumb soil cavity left by the old iron pipe; also found a standard white poly 'T' marker post nearby which I pulled and reset 8" East. The corner is located 21.5' West of the centerline of a North/South unimproved roadway and on the North bank of a 3' to 5' wide creek bearing N65°W and then southerly along the West side of the old roadway. I left old iron pipe flat on grade nearby.

This corner also previously located by Oneida County GPS control survey per county survey records.

In September-October 1863, William E. Daugherty/GLO set a wood post as original corner at a 12 link wide creek flowing SE and noted OBTs: a 10" Mr N40°W 14 links and a 10" Cedar N77°E 39 links; all are now obliterated.

This recovery completed August 6, 2004; there were no direct witnesses.

Plan view map of monument location with bearing and distance ties to a minimum of four(4) described witness or reference monuments of concrete, natural stone, iron, live bearing trees or equivalent material. If applicable, also show a minimum of two(2) bearing and distance ties to any other monument found and not accepted; including the bearing and distance from the accepted monument.



- WITNESS MONUMENT TIES:**
- ① New 7" Fir BT N57°E 50.64'.
 - ② N80°E 13.06' to chiseled '+' in top center of flat topped 12"x40" boulder at West edge of roadway.
 - ③ N80°W 6.64' to chiseled '+' in domed top of 18"x24" boulder in creek against North bank.
 - ④ New 4.5" Elm BT S65°E 43.22'.
- No other suitable BTs found nearby. I flagged monument, 'T' post and BTs blaze orange and marked '+' in top of boulders with orange paint keel cross.

SCALE: 1" = 30'

Unless otherwise indicated, all bearing tree ties are to a .25" dia. by 2.5" long PK nail with a 1.25" dia. steel washer driven into unblazed right face and a .25" dia. by 2.5" long PK nail with a 2" dia. steel washer stamped BT is also driven into unblazed face of bearing tree at DBH; the basis for measured bearings is by compass to nearest degree and all tie distances are measured horizontal by steel tape corrected to nearest 1/100th feet at standard temperature of 68° F.

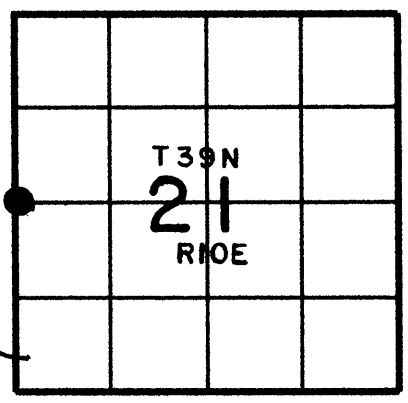
RLS SEAL:



LAND SURVEYOR CERTIFICATE:

I, William C. Rohde, hereby certify that I am duly licensed as a Professional Land Surveyor in the State of Wisconsin; that this USPLS monument location was determined by me and/or under my direct supervision and control; and that this U.S. Public Land Survey Monument Location Record is true and correct to the best of my knowledge and belief.

Signed: *William C. Rohde*
 William C. Rohde RLS 841



SECTION LOCATION MAP INDEX NO. P 9

3910202000