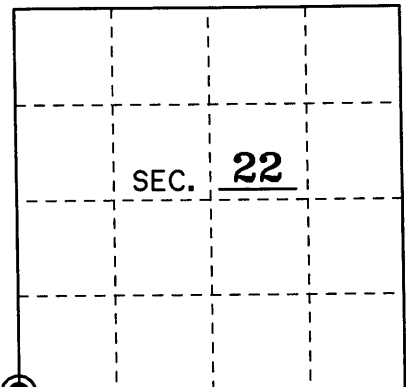


# U.S. PUBLIC LAND SURVEY MONUMENT RECORD

Note: This form is intended and designed to fulfill all requirements of Wisconsin Administrative Code, Chapter A-E 7.08 U.S. Public Land Monument Record (3)(a)(b)(c)(d)(e)(f)(g)(h)(i). An additional sheet may be added if necessary to conform with said requirements.

(a) CORNER LOCATION: Southwest County or State Plane Coordinates  
Section 22 Corner of Section 22 Northing \_\_\_\_\_  
 Township 39 North Easting \_\_\_\_\_  
 Range 10 East Datum Base \_\_\_\_\_  
 Township/City Sugar Camp County of VILAS



(b) HISTORY OF ORIGINAL CORNER ESTABLISHMENT Original B.T.'s  
 Original Surveyor: William E. Daugherty 8" Tamarack S 24°E 10 Lks.  
 Date of Survey: Sept-Oct 1863 8" Tamarack N 42°W 10 Lks.

(b)(f)(g)(h) Description of monument found at this corner and if it was accepted, state all evidence (material, testimonial, occupational, plats, records, other monuments) used as a basis for accepting. If not accepted or if nothing was found, state evidence used as basis for establishing location. If reestablished through lost corner proportionate methods, indicate all monuments, distances and directions used to establish. Indicate type of monument and sign post found or set.

Sept. 1863: William E. Daugherty set a wood post for the original corner in his survey of T 39 N, R 10 E. He also made two B.T.'s as noted above.

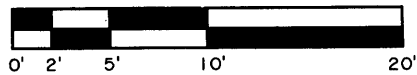
Aug., 1908: Vaughn found the original corner and also the original B.T.'s one now a stub. He uses it as the Section Corner in his survey.

3-8-1961: Ripco shows a monument that they accepted on their map of Section 22, T 39 N, R 10 E. There is no evidence when they actually set the monument.

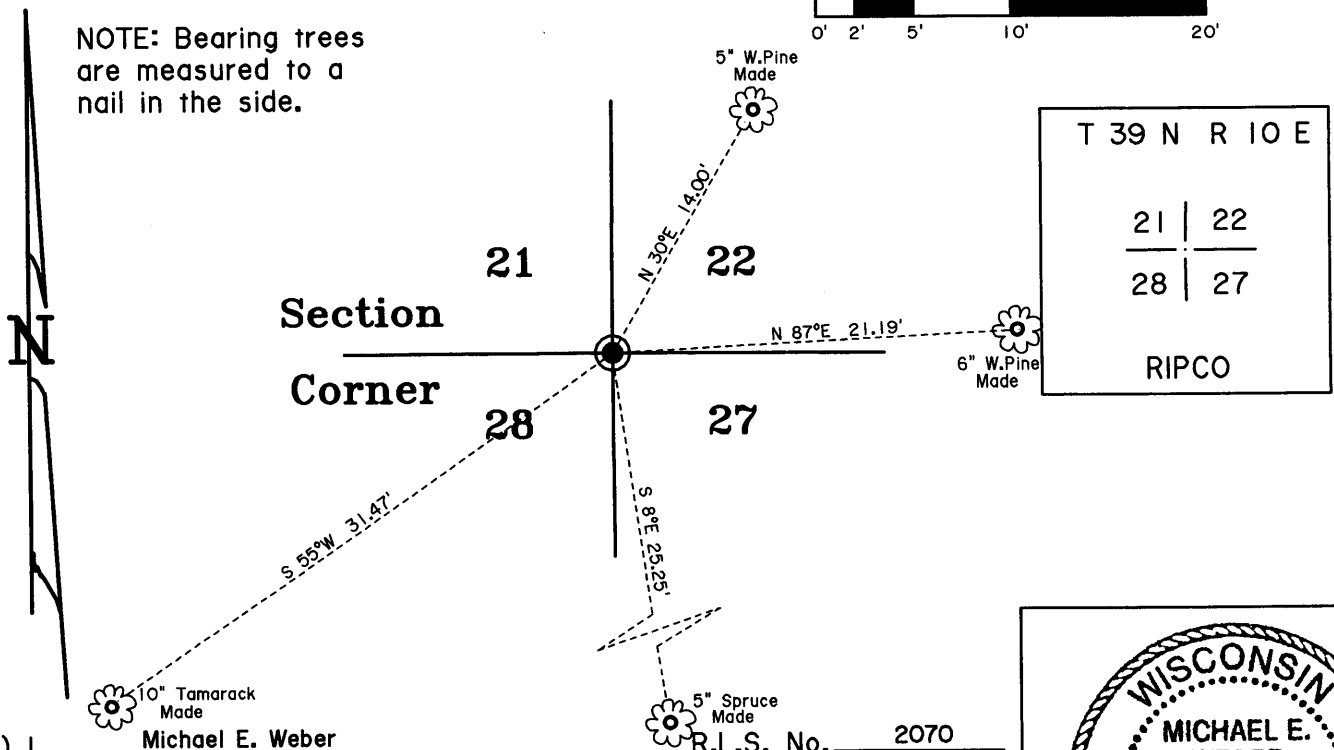
8-15-2007: I, Michael E. Weber, found a 2" iron pipe with a 4" square top and a wood post one foot East. The monument was stamped to identify the corner as shown below. I found no evidence of old B.T.'s. I made four new ones as shown below.

(c)(d)(e) Plan view of the corner with ties to at least 4 witness monuments. If in disagreement with previously established corner, show the distances between the two corners and also indicate the ties to the disputed.

**SCALE: 1" = 10'**



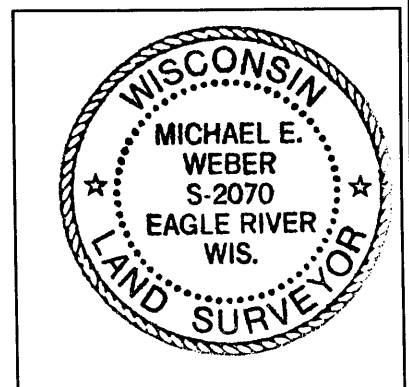
NOTE: Bearing trees are measured to a nail in the side.



(i) I, Michael E. Weber R.L.S. No. 2070

hereby certify that the corner location on this record was determined by me or under my direction and control and that this U.S. Public Land Survey Monument Record is correct and complete to the best of my knowledge and belief.

Signature Michael E Weber Date August 15, 2007



Index No. R-13

3910210000