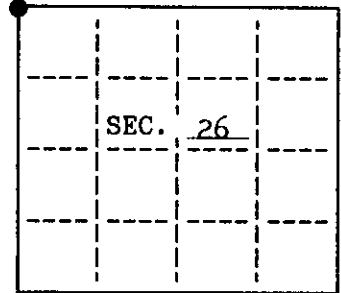


U.S. PUBLIC LAND SURVEY MONUMENT RECORD

Note: This form is intended and designed to fulfill all requirements of Wisconsin Administrative Code, Chapter A-E 7.08 U.S. Public Land Survey Monument Record (3)(a)(b)(c)(d)(e)(f)(g)(h)(i). An additional sheet may be added if necessary to conform with said requirements.

(a) CORNER LOCATION: State Plane Coordinates
 Northwest corner of Sec. 26 X Not available
 Township 39 North Y Not available
 Range 10 East Datum Base _____
 Town/City Three Lakes County of Oneida



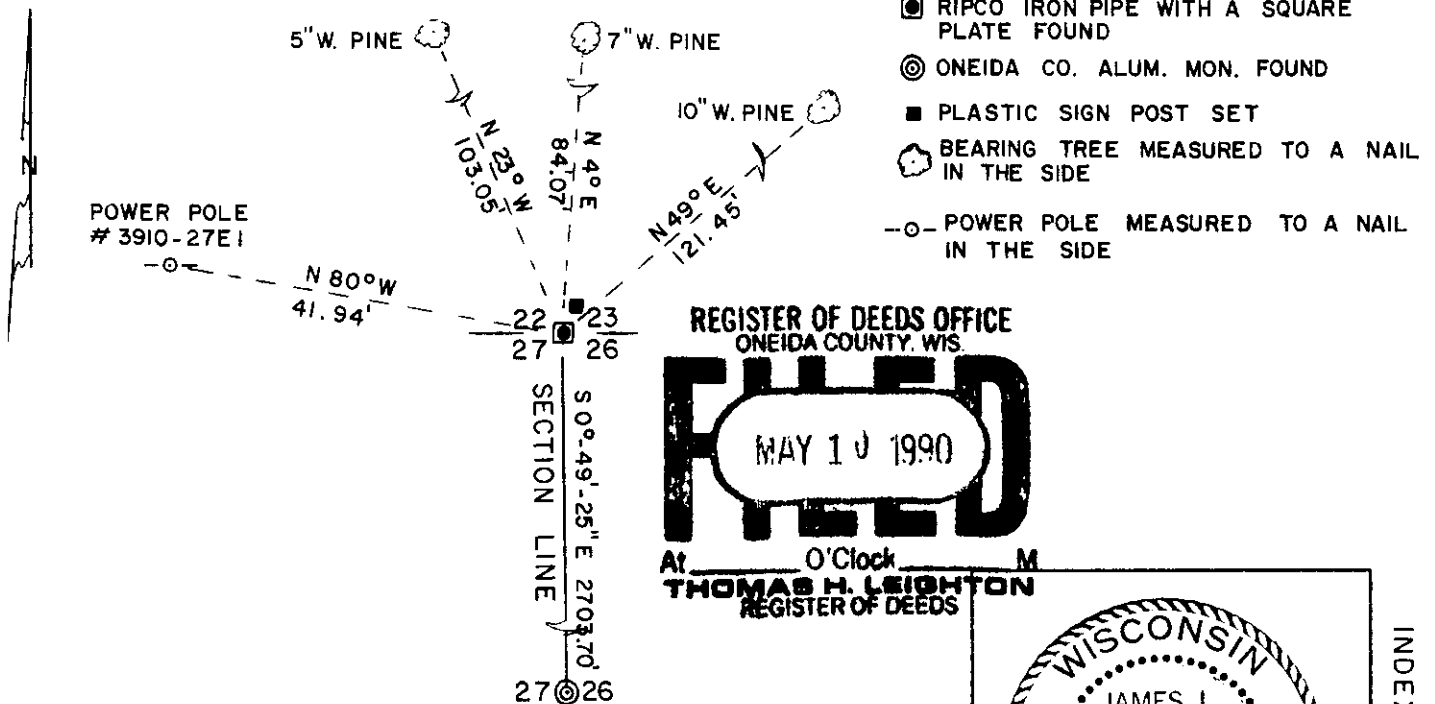
(b) HISTORY OF ORIGINAL CORNER ESTABLISHMENT
 Original Surveyor: William E. Daugherty Original B.T.'S
 Date of Survey: Commenced Sept. 30, 1863 10" W. Pine S 50° W 10 lks.
 8" Y. Pine N 41° W 60 lks.
 Completed Oct. 7, 1863

(b)(f)(g)(h) Description of monument found at this corner and if it was accepted, state all evidence (material, testimonial, occupational, plats, records, other monuments) used as a basis for accepting. If not accepted or if nothing was found, state evidence used as basis for establishing location. If reestablished through lost corner proportionate methods, indicate all monuments, distances and directions used to establish. Indicate type of monument and sign post found or set.

Dec. 20, 1989: Found a Ripco iron pipe with a square plate.
 Made the following bearing trees measured to a nail in the side:
 5" W. Pine N 23° W 103.05'
 7" W. Pine N 4° E 84.07'
 10" W. Pine N 49° E 121.45'
 Power pole #3910-27E1 N 80° W 41.94'
 Set a plastic sign post northeast of the corner.

(c)(d)(e) Plan view of corner with ties to at least 4 witness monuments. If in disagreement with previously established corner, show the distances between the two corners and also indicate the ties to the disputed.

LEGEND
 SCALE: 1" = 20'



REGISTER OF DEEDS OFFICE
 ONEIDA COUNTY, WIS.
FILED
 MAY 10 1990
 At _____ O'Clock _____ M
THOMAS H. LEIGHTON
 REGISTER OF DEEDS

WISCONSIN
 JAMES L. WILL
 S-1410
 EAGLE RIVER
 WIS.
 LAND SURVEYOR

INDEX NO. R-17

(i) I, James L. Will, R.L.S. #1410
 hereby certify that the corner location on this record was determined by me or under my direction and control and that this U.S. Public Land Survey Monument Record is correct and complete to the best of my knowledge and belief.

James L. Will
 Signature Date April 27, 1990

3910220000