

State of Wisconsin

County of Oneida } ss.

I James L. Will 17th day of December 1989, I found evidence of the North east Section corner of Section 26 Township 30 East 10, North, Range 10 East, Fourth Principal Meridian, as described hereon; and that from this evidence I established a new monument and accessories as described hereon to perpetuate the original location of this corner.

Resident witnesses:

Thomas A. Boettcher

U. S. Public Land Survey Monument Record

Index No. R-21

History of original corner establishment:

Original corner was established during the course of the subdivision of T 39 N, R 10 E, which was started Sept. 30, 1863 and completed Oct. 7, 1863 by Wm. E. Laugherty, Deputy Surveyor.

Original B.T.'s:

12" Y. Pine N 83° E 232 lks.  
8" Y. Pine S 88° W 696 lks.

Description of corner evidence found:

Found a 1" iron pipe and old wood post by Robert Bandow in 1955.

Found the following bearing trees measured to a nail in the side of the trees:

8" W. Pine S 67° W 43.95'  
8" W. Pine N 22° W 40.78'

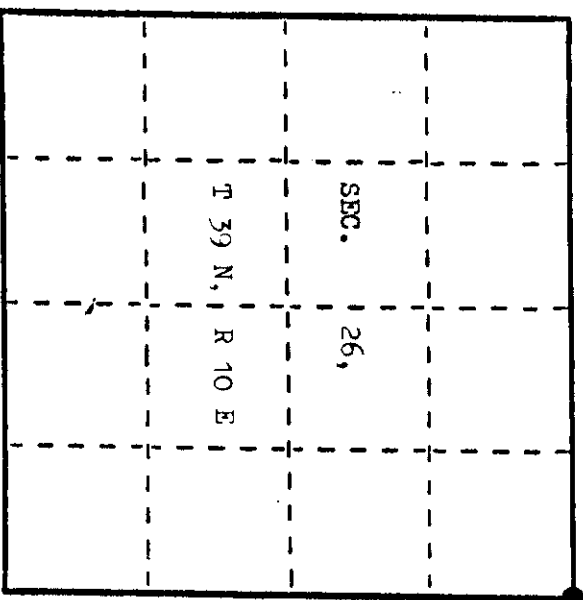
Description of monument and accessories I established to perpetuate the original location of this corner.

Set an Oneida County aluminum monument over the 1" iron pipe.

Made the following new bearing trees measured to a nail in the side of the trees:

5" W. Pine N 66° E 49.85'  
4" Spruce S 27° E 57.64'

Set a white plastic sign marker 0.8' northeast of the corner.



● - Corner monument restored.

Dated at Eagle River, Wis., this 22nd day of December, 1989

Signature [Signature] Title Registered Land Surveyor Registration No. S-1410  
(County Surveyor, Registered Land Surveyor, or other duly authorized official)

Office of Register of Deeds, County of Oneida, I hereby certify that the within instrument was filed in this office for record on the 22nd day of December, 1989 at 10 o'clock A. M.

(Register of Deeds)

By [Signature] Deputy

3910230000

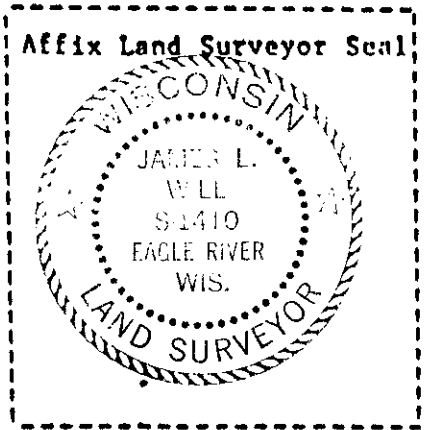
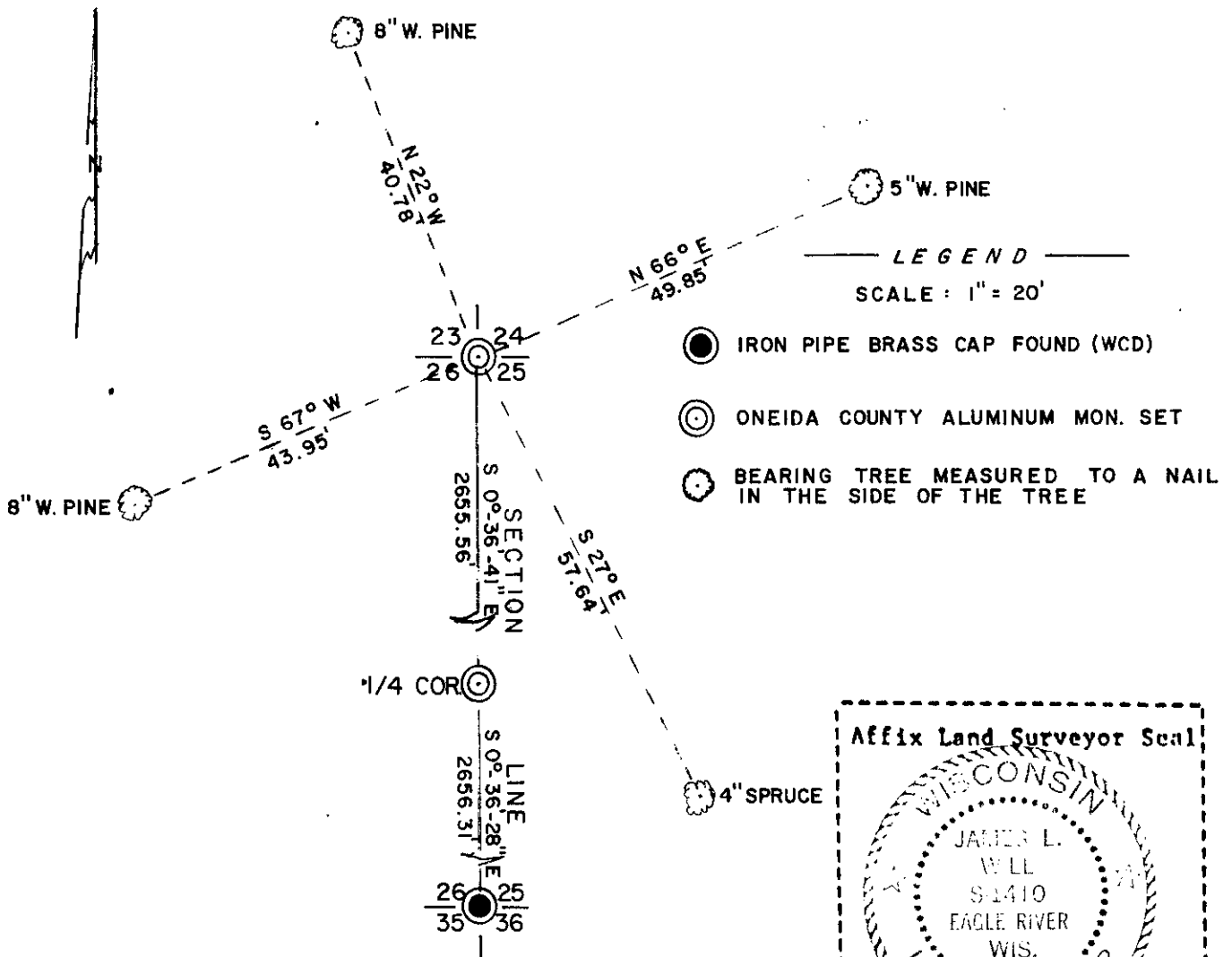
Describe any material discrepancy between the location of the corner as restored or reestablished and the location of that corner as previously restored or reestablished by distance and direction. Show the discrepancy on the plan view drawing under (d), above. Show the distances between the corner as previously restored or reestablished and (1) the corner as restored or reestablished, and (2) to at least 2 of the witness monuments shown on the drawing in (d), above.

See sketch below.

Was the corner restored through acceptance of (1) an obliterated evidence location, or, (2) a found perpetuated location?

Corner was restored through acceptance of a found perpetuated location.

Was the corner reestablished through lost corner proportionate methods? If so, show the method, including the directions and distances to other public land survey corners used as evidence or used for proportioning in determining the corner location?



I, James L. Will, R.L.S. #1410  
 (type or print name) certify that the corner location shown on this record was determined by me or under my direction and control and that this U.S. Public Land Survey Monument Record is correct and complete to the best of my knowledge and belief.

*James L. Will*  
 Signature

December 22, 1989  
 Date