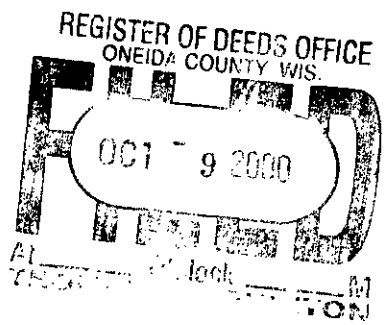


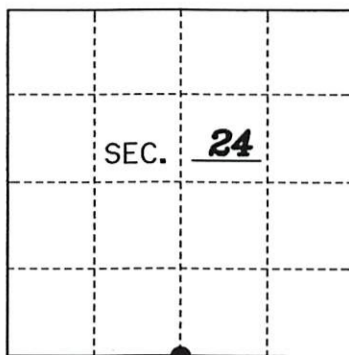
Made new B.T.'s and set plastic sign post 10' south of monument.



U.S. PUBLIC LAND SURVEY MONUMENT RECORD

Note: This form is intended and designed to fulfill all requirements of Wisconsin Administrative Code, Chapter A-E 7.08 U.S. Public Land Monument Record (3)(a)(b)(c)(d)(e)(f)(g)(h)(i). An additional sheet may be added if necessary to conform with said requirements. Deeds Square

(a) CORNER LOCATION: South 1/4
 Corner of Section 24
 Township 39 North, Range 10 East
 Township/City Three Lakes
 County of Oneida



REGISTER OF DEEDS OFFICE
 ONEIDA COUNTY
 FILED

JAN 22 2021

KYLE J. FRANSON
 REGISTER OF DEEDS

(b) HISTORY OF ORIGINAL ESTABLISHMENT
 Original Surveyor: William E. Daugherty
 Date of Survey: 1863
 Original B.T.'s: 6" Aspen S13°W 27 lks.
7" Aspen N67°E 25 lks.

County or State Plane Coordinates
 Northing 239914.652'
 Easting 321811.254'
 Datum Base WISCORS-ONEIDA GRID

NAD 83 (2011)

The coordinate values shown have been determined by the average of multiple RTK GPS observations taken initially and returning to the site on a different day at a different time and taking additional multiple RTK GPS observations and averaging those with the initial observations.

(b)(f)(g)(h) Description of monument found at this corner and if it was accepted, state all evidence (material, testimonial, occupational, plats, records, other monuments) used as a basis for accepting. If not accepted or if nothing was found, state evidence used as basis for establishing location. If reestablished through lost corner proportionate methods, indicate all monuments, distances and directions used to establish. Indicate type of monument and sign post found or set.

As part of an Oneida County Land Information Office contract to preserve Public Land Survey System corners in roadways that may be obliterated due to road resurfacing, I have performed the following corner maintenance as described below:

1977: Robert Bandow sets iron pipe at this position. Map B644 of County records.

1982: Genisot & Associates uses this corner for a section subdivision as shown on survey B496 of the Oneida Co. records.

1996: Kip W. Soder uses this iron pipe position for CSM Vol. 7 cs on Page 1867

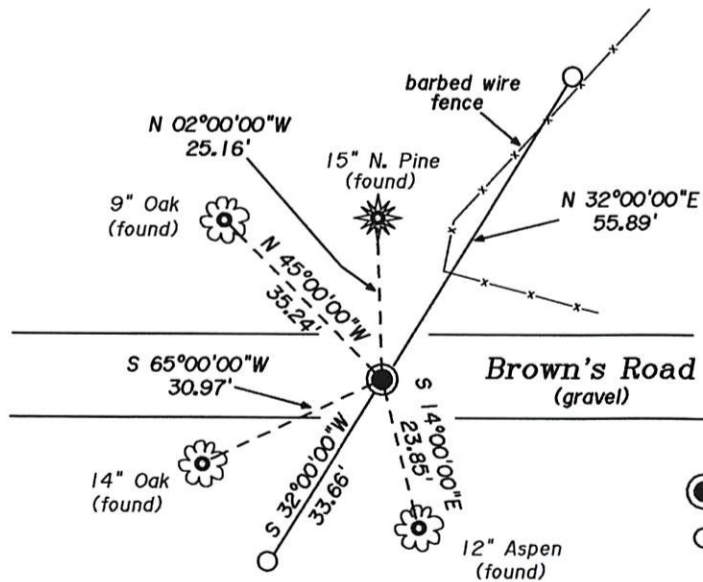
2000: Dana Boulden recovers iron pipe approx. 6" below surface and replaces it with a Oneida Co. aluminum cap monument approx. 4" below the surface and makes a U.S.P.L.S. Monument Record.

June, 2019: Thomas Boettcher of Eagle Landmark Surveying finds the aluminum monument 9" below the surface of a dirt road, and 4' south of the centerline of the road with a guard post South 7.7' from the corner. Verifies it's location through corner ties as shown below.

December, 2019: Thomas Boettcher & Kip Soder return to the corner site and set a Mag nail in the new road surface from the existing reference ties. We acquire another RTK GPS reading for averaging.

December 2020: Thomas Boettcher and Kip Soder return to the site and find the mag nail in the new road surface. We checked the references as shown below and took a series of RTK GPS readings to average with the previous observations.

(c)(d)(e) Plan view of the corner with ties to at least 4 witness monuments. If in disagreement with previously established corner, show the distances between the two corners and also indicate the ties to the disputed.



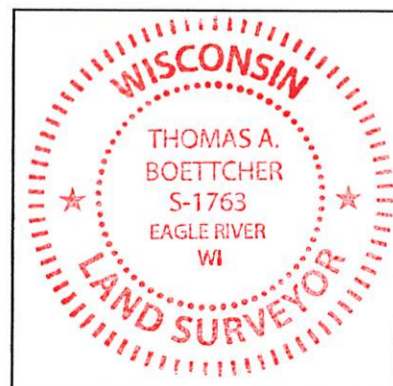
SCALE: 1" = 30'

- Oneida Co. aluminum cap monument found
- 1" dia. iron pipe set
- Bearing Trees (measured to nail in side)

(i) I, Thomas A. Boettcher P.L.S. No. 1763

hereby certify that the corner location on this record was determined by me or under my direction and control and that this U.S. Public Land Survey Monument Record is correct and complete to the best of my knowledge and belief.

Signature Date December 23, 2020



Index No. 3910240020