

U.S. PUBLIC LAND SURVEY MONUMENT RECORD

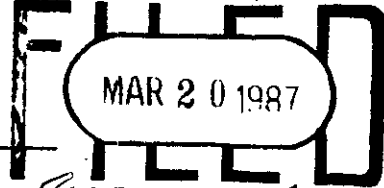
Note: This form is intended and designed to fulfill all requirements of Wisconsin Administrative Code, Chapter A-E 5.02, U.S. Public Land Survey Monument Record (3) (a) (b) (c) (d) (e) (f) (g) (h) (i). An additional sheet may be added if necessary to conform with said requirements.

(a) Corner location: Township 39 North
 Range 10 East/West

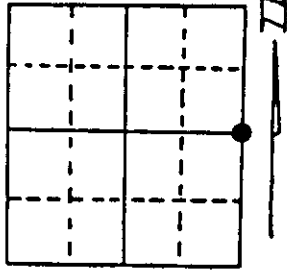
Town/City/Village Three Lakes

County Oneida

REGISTER OF DEEDS OFFICE
ONEIDA COUNTY, WIS.



A 8... P. D. ... O'clock ... M
DORIS VERABE KUEHN
 REGISTER OF DEEDS



Section 24

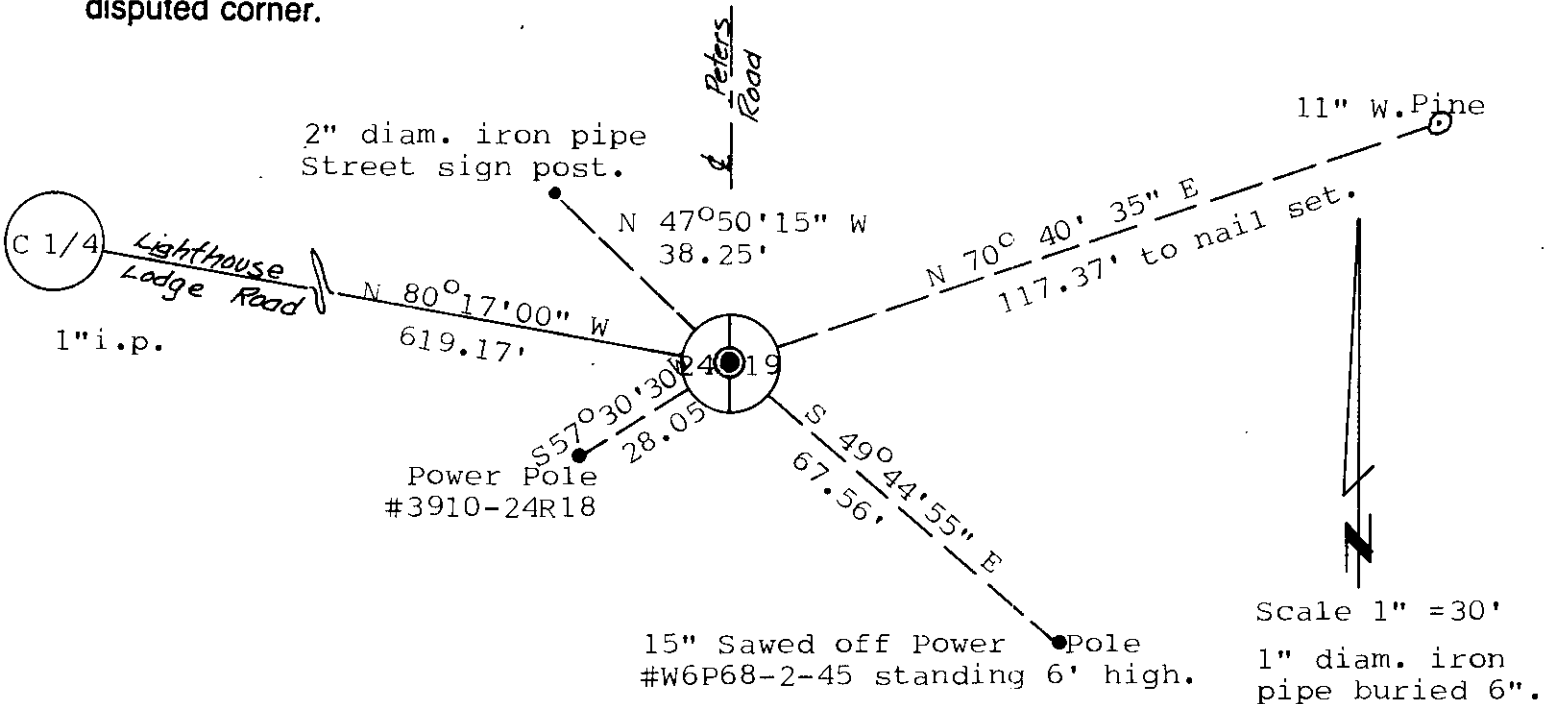
(b) (f) (g) (h) Description of monument found at this corner and if it was accepted, state all evidence (material, testimonial, occupational, plats, records, other monuments) used as a basis for accepting. If not accepted or if nothing was found, state evidence used as basis for establishing location. If reestablished through lost corner proportionate methods, indicate all monuments, distances and directions used to establish.

APRIL 11, 1986

Found 1" diameter iron pipe in place at the intersection of Lighthouse Lodge Road and Peters Road. The pipe is believed to be a perpetuation of the corner from D.H. Vaughn survey notes from Jan. 12, 1916. 4 previous surveys filed in the Oneida County Surveyors Office indicate the iron pipe as the 1/4 Corner. See O.C.S. File#B1028

#B1046
 #B1093
 #B1416

(c) (d) (e) Plan view of corner with ties to at least 4 witness monuments. If in disagreement with previously established corner, show the distances between the two corners and also indicate the ties to the disputed corner.



(i) Stephen J. Favorite, RLS#S-1616,
 (type or print name) certify that the corner location on this record was determined by me or under my direction and control and that this U.S. Public Land Survey Monument Record is correct and complete to the best of my knowledge and belief.

Stephen J. Favorite
 Signature

March 13, 1987
 Date

3910242000



Index No. P-25