

State of Wisconsin

County of Oneida } ss.

I, Robert F. Bando, do hereby certify that on the 5th day of July, 1984, I found evidence of the Southeast section corner of Section 25 Township 39 North, Range 10 East, Fourth Principal Meridian, as described hereon; and that from this evidence I established a new monument and accessories as described hereon to perpetuate the original location of this corner.

Resident witnesses:

Michael E. Weber

Eric Zyhowski

U.S. Public Land Survey Monument Record

Index No. V-25

History of original corner establishment:

Original corner was established during the course of the exterior of T 39 N, R 10 E, which was started July 21, 1859 and completed July 26, 1859 by Hiram C. Fellows, Deputy Surveyor.

Original B.T.'s:

12" Y. Pine N 70° W 16.45 lks.  
25" W. Pine N 95° E 9.13 lks.  
36" W. Pine S 12° E 4.35 lks.

Found a GIO 2" iron pine brass cap in place.

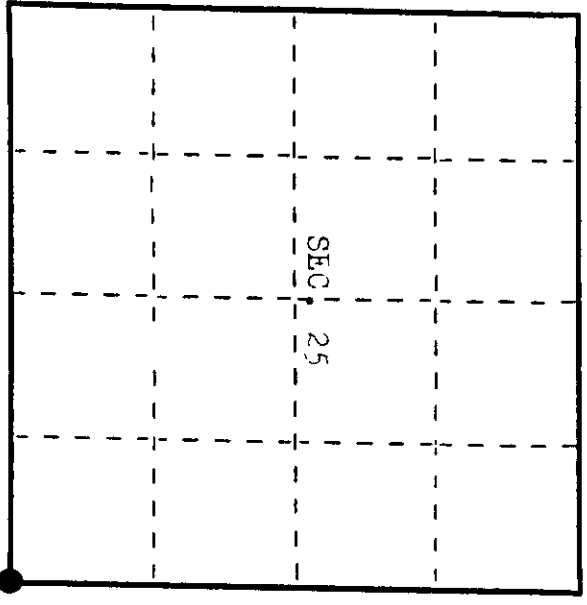
Found the following bearing trees:

10" Oak N 60° E 14.80'  
15" Oak S 22° E 34.85' (Measurements are to a nail in the  
10" W. Birch S 19° W 26.27' side of the trees.)  
10" W. Birch S 68° W 17.73'

Also found a wood post NE of the corner.

Description of monument and accessories I established to perpetuate the original location of this corner.

None.



Dated at Eagle River, Wis, this 14th day of Sept., 1984.

Signature: [Signature] Title Registered Land Surveyor Registration No. S-104  
(County Surveyor, Registered Land Surveyor, or other duly authorized official)

Office of Register of Deeds, County of Oneida, I hereby certify that the within instrument was filed in this office for record on the 14th day of Sept., 1984 at 10:00'clock A.M.

(Register of Deeds)

By: [Signature] Deputy

Describe any material discrepancy between the location of the corner as restored or reestablished and the location of that corner as previously restored or reestablished by distance and direction. Show the discrepancy on the plan view drawing under (d), above. Show the distances between the corner as previously restored or reestablished and (1) the corner as restored or reestablished, and (2) to at least 2 of the witness monuments shown on the drawing in (d), above.

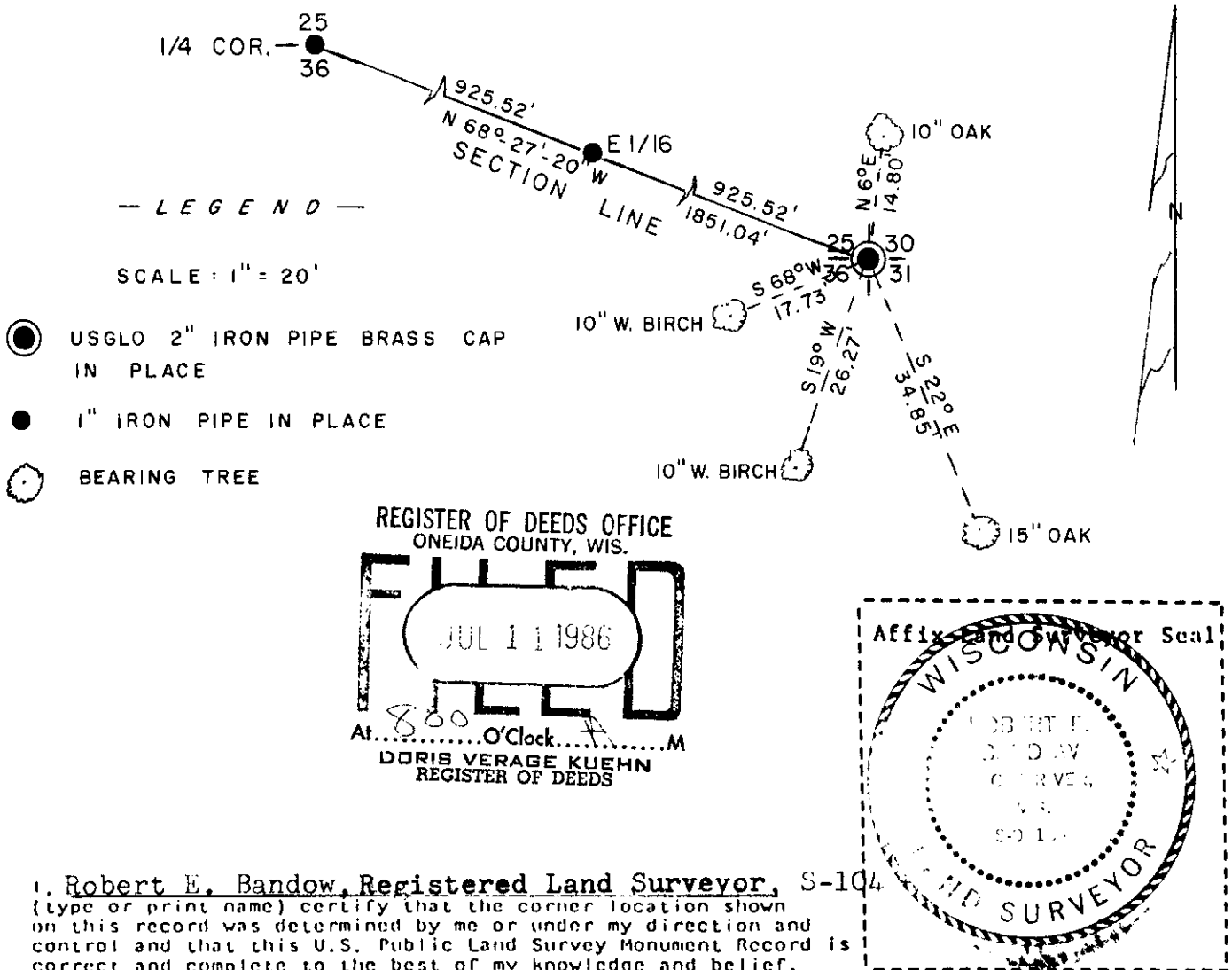
See sketch below.

Was the corner restored through acceptance of (1) an obliterated evidence location, or, (2) a found perpetuated location?

Corner was restored through acceptance of a found perpetuated location.

Was the corner reestablished through lost corner proportionate methods? If so, show the method, including the directions and distances to other public land survey corners used as evidence or used for proportioning in determining the corner location?

See sketch below.



I, Robert E. Bandow, Registered Land Surveyor, S-104  
(type or print name) certify that the corner location shown on this record was determined by me or under my direction and control and that this U.S. Public Land Survey Monument Record is correct and complete to the best of my knowledge and belief.

Robert E. Bandow Sept. 14, 1984  
Signature Date