

State of Wisconsin } ss.

County of Oneida

I, Robert E. Bando, do hereby certify that on the 5th day of July, 1984, I found evidence of the South one-quarter corner of Section 25, Township 39 North, Range 10 East, Fourth Principal Meridian, as described hereon; and that from this evidence I established a new monument and accessories as described hereon to perpetuate the original location of this corner.

Resident witnesses:

Michael E. Weber

Eric Zychowski

U. S. Public Land Survey Monument Record

Index No. V-23

History of original corner establishment:

Original corner was established during the course of the subdivision of T 39 N, R 10 E which was started Sept. 30, 1863 and completed Oct. 7, 1863 by William E. Daugherty, Deputy Surveyor.

Original B.T.'s:

8" Y. Pine S 70° E 91 lks.
12" Y. Pine N 63° W 19 lks.

Description of corner evidence found:

Corner fell in old dirt road and was knocked out.

Found the following old bearing trees:

13" N. Pine S 42° W 39.60' (measurement is to a nail in the side of the tree.)

Description of monument and accessories I established to perpetuate the original location of this corner.

Reset a 1"x2 1/4" iron pipe for the corner using information from Genisot Engineering map #1691, dated 10/25/55.

Blazed and scribed the following new bearing trees:

7" N. Pine S 79° E 36.71' (Measurements are to a nail in the
6" W. Birch S 23° E 26.51' side of the trees.)
12" Oak N 69° W 39.12'

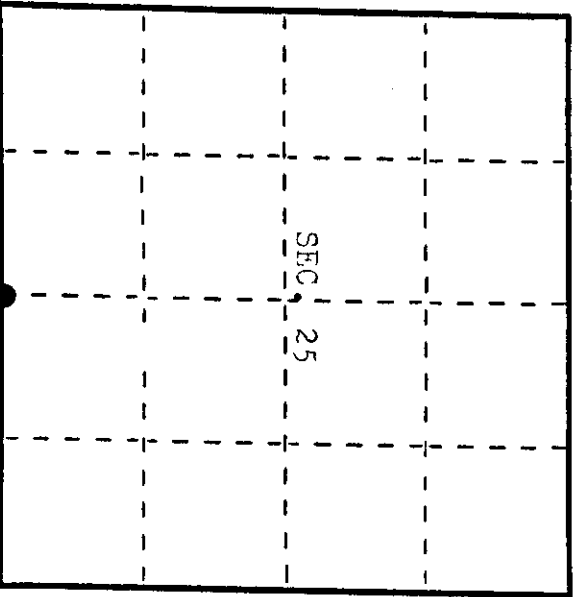
Dated at Earle River, Wis, this 14th day of Sept., 1984

Signature: [Signature] Title Registered Land Surveyor Registration No. S-104
(County Surveyor, Registered Land Surveyor, or other duly authorized official)

Office of Register of Deeds, County of Oneida, I hereby certify that the within instrument was filed in this office for record on the 19th day of Sept., 1984 at 10:00 o'clock M.

(Register of Deeds)

By: [Signature] Deputy



● - Corner monument restored.

3910250020

Describe any material discrepancy between the location of the corner as restored or reestablished and the location of that corner as previously restored or reestablished by distance and direction. Show the discrepancy on the plan view drawing under (d), above. Show the distances between the corner as previously restored or reestablished and (1) the corner as restored or reestablished, and (2) to at least 2 of the witness monuments shown on the drawing in (d), above.

See sketch below.

Was the corner restored through acceptance of (1) an obliterated evidence location, or, (2) a found perpetuated location?

The corner was restored using information from Genisot Engineering map #1691 dated 10/25/55.

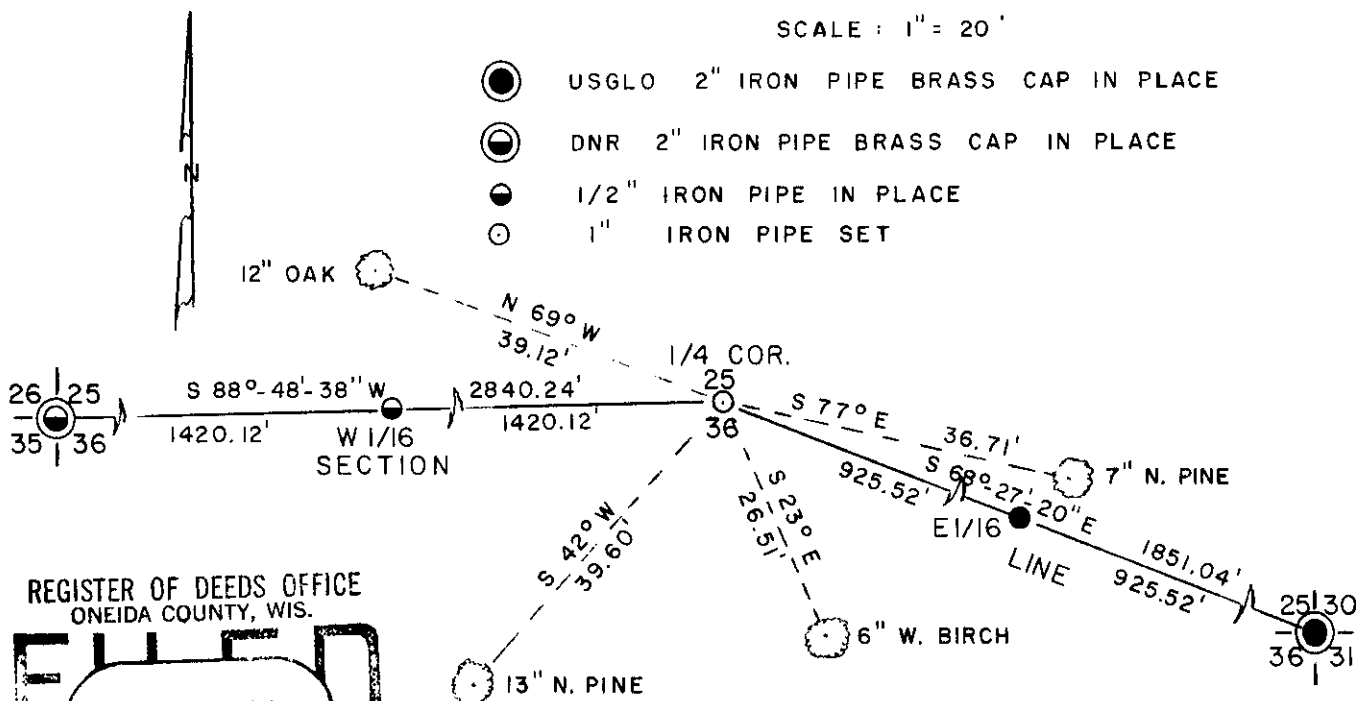
Was the corner reestablished through lost corner proportionate methods? If so, show the method, including the directions and distances to other public land survey corners used as evidence or used for proportioning in determining the corner location?

See sketch below.

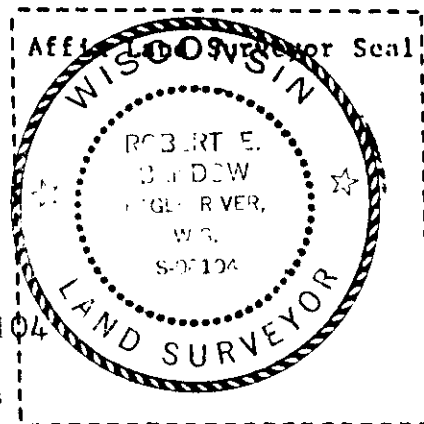
— L E G E N D —

SCALE : 1" = 20'

- USGLO 2" IRON PIPE BRASS CAP IN PLACE
- ⊙ DNR 2" IRON PIPE BRASS CAP IN PLACE
- 1/2" IRON PIPE IN PLACE
- 1" IRON PIPE SET



REGISTER OF DEEDS OFFICE
ONEIDA COUNTY, WIS.
FILED
JUL 11 1986
At 8:00 O'clock A.M.
DORIS VERAGE KUEHN
REGISTER OF DEEDS



I, Robert E. Bandow, Registered Land Surveyor, S-104
(type or print name) certify that the corner location shown on this record was determined by me or under my direction and control and that this U.S. Public Land Survey Monument Record is correct and complete to the best of my knowledge and belief.

Robert E. Bandow
Signature

Sept. 14, 1984
Date