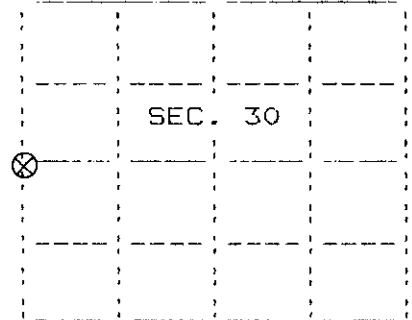


U.S. PUBLIC LAND SURVEY MONUMENT RECORD

Note: This form is intended and designed to fulfill all requirements of Wisconsin Administrative Code, Chapter A-E 7.08 U.S. Public Land Survey Monument Record(3)(a)(b)(c)(d)(e)(f)(g)(h)(i). An additional sheet may be added if necessary to conform with said requirements.

(a) CORNER LOCATION State Plane Coordinates

W 1/4 corner of Sec. 30 X _____
 Township 39 North Y _____
 Range 11 East Datum Base _____
 Town/City Three Lakes County of Oneida



(b) HISTORY OF ORIGINAL CORNER ESTABLISHMENT

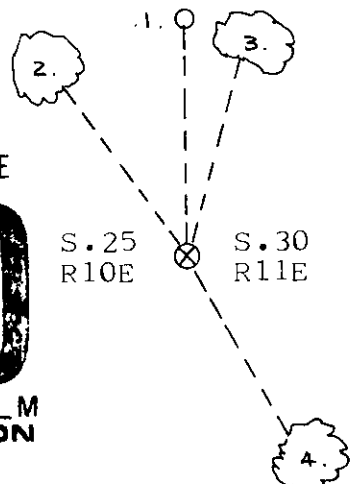
Original Surveyor H.C. Fellows Original BT'S:
 Date of Survey: Commenced 1859 Hemlock 15 S88E, 35
 Completed 1859 Red Oak 15 S27W, 63

(b)(f)(g)(h) Description of monument found at this corner and if it was accepted, state all evidence (material, testimonial, occupational, plats, records, other monuments) used as a basis for accepting. If not accepted or if nothing was found, state evidence used as basis for establishing location. If reestablished through lost corner proportionate methods, indicate all monuments, distances and directions used to establish. Indicate type of monument found and sign post found or set.

10-25-55: survey map by Genisot Engineering shows corner as "iron pipe" n.pine 3" S74W, 11.6'; w.pine 10" N38-30E, 34.8'; old w.pine stp. 12" S88-30W, 60.8'.

10-25-90: I found and accepted a 2" dia. iron pipe lying 7 feet east of an unimproved road. I replaced said pipe with aluminum post 30" long, 2-1/2" dia. with aluminum cap stamped to identify. I found or established the following witnesses: found scribed pine stump 18" N40E, 35.0', found 1-1/2" dia. iron pipe N0-39-53E, 200.08'; set nail in n.pine 15" N36W, 35.37'; set nail in maple 10" N15E, 31.45'; set nail in w.pine 26" S29E, 43.50'; set plastic sign post east, 3 feet.

(c)(d)(e) Plan view of corner with ties to at least four witness monuments. If in disagreement with previously established corner, show the distances between the two corners and also indicate the ties to the disputed corner.



1. 1-1/2" dia. iron pipe N0-39-53E, 200.08 feet.
 2. nail in n.pine 15" N36W, 35.37 feet.
 3. nail in maple 10" N15E, 31.45 feet.
 4. nail in w.pine 26" S29E, 43.50 feet.
- (not to scale)

REGISTER OF DEEDS OFFICE
 ONEIDA COUNTY, WIS
FILED
 NOV 27 1900
 At _____ O'Clock _____ M
THOMAS H. LEIGHTON
 REGISTER OF DEEDS

I, Stephen J. Favorite, Registered Land Surveyor #S-1616 certify that the corner location on this record was determined by me or under my direction and control and that this U.S. Public Land Survey Monument Record is correct and complete to the best of my knowledge and belief.

Stephen J. Favorite 10-30-90
 Signature Date

