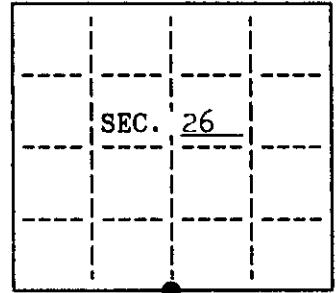


U. S. PUBLIC LAND SURVEY MONUMENT RECORD

Note: This form is intended and designed to fulfill all requirements of Wisconsin Administrative Code, Chapter A-E 7.08 U.S. Public Land Survey Monument Record (3)(a)(b)(c)(d)(e)(f)(g)(h)(i). An additional sheet may be added if necessary to conform with said requirements.

(a) CORNER LOCATION: State Plane Coordinates
 South 1/4 corner of Sec. 26 X Not available
 Township 39 North Y Not available
 Range 10 East Datum Base _____
 Town/City Three Lakes County of Oneida



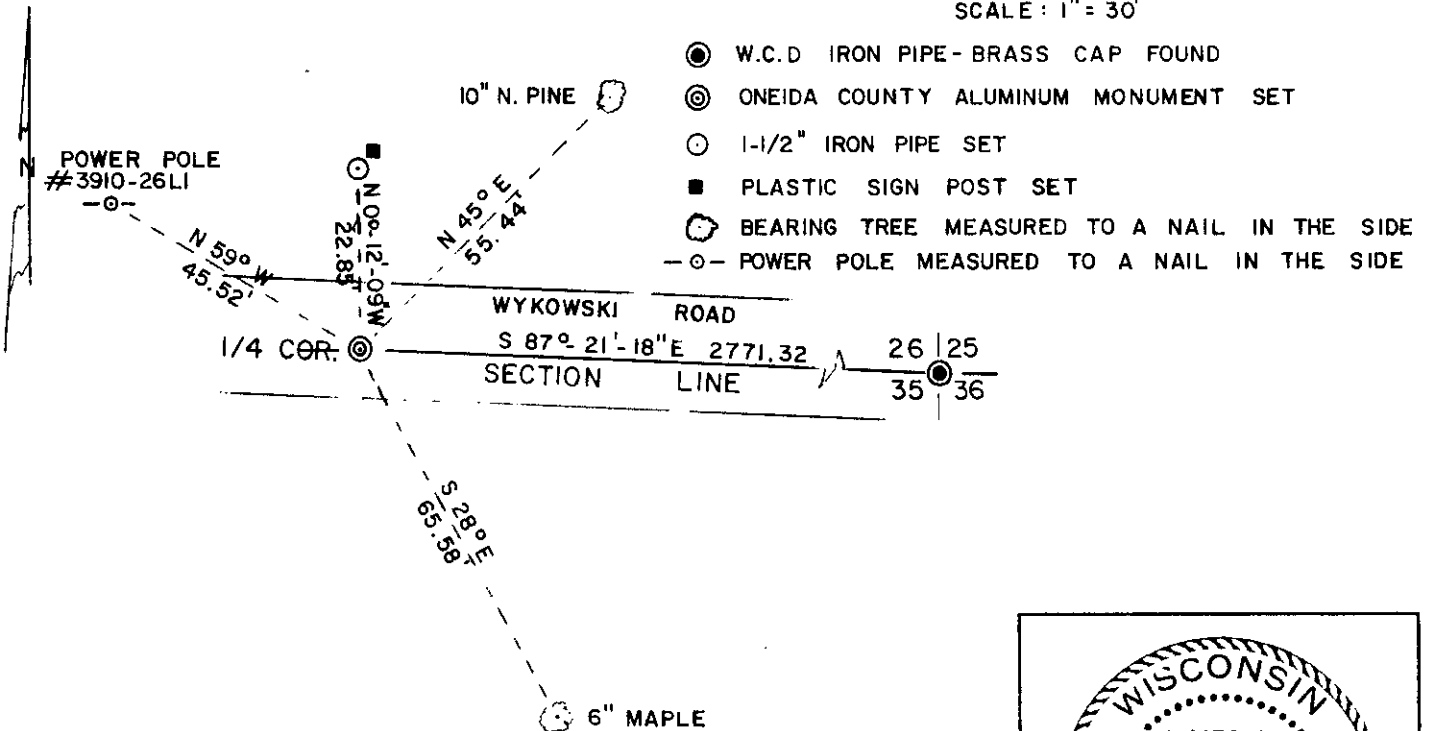
(b) HISTORY OF ORIGINAL CORNER ESTABLISHMENT
 Original Surveyor: William E. Daugherty Original B.T.'S
 Date of Survey: Commenced Sept. 30, 1863 8" Birch S 20° W 9 lks.
 Completed Oct. 7, 1863 8" Aspen N 39° E 25 lks.

(b)(f)(g)(h) Description of monument found at this corner and if it was accepted, state all evidence (material, testimonial, occupational, plats, records, other monuments) used as a basis for accepting. If not accepted or if nothing was found, state evidence used as a basis for establishing location. If reestablished through lost corner proportionate methods, indicate all monuments, distances and directions used to establish. Indicate type of monument and sign post found or set.

Dec. 20, 1989: Found a 1/2" iron rod 2' south of the centerline of Wykowski Road. Replaced the iron rod with an Oneida Co. Aluminum monument 8" below the surface of the road.
 Set a 1-1/2" iron pipe N 0°-12'-09" W 22.85' and set a plastic sign post northeast of the pipe.
 Made the following bearing trees measured to a nail in the side:
 10" N. Pine N 45° E 55.44'
 6" Maple S 28° E 65.58'
 Power pole #3910-26L1 N 59° W 45.52'

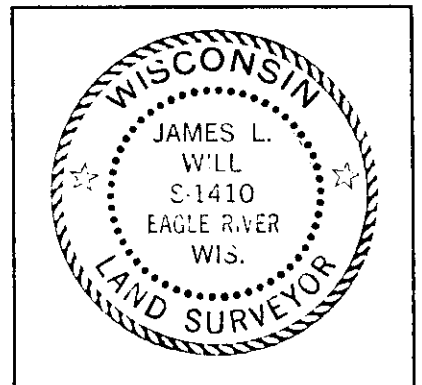
(c)(d)(e) Plan view of corner with ties to at least 4 witness monuments. If in disagreement with previously established corner, show the distances between the two corners and also indicate the ties to the disputed.

LEGEND
 SCALE: 1" = 30'



(i) I, James L. Will, R.L.S. # 1410 hereby certify that the corner location on this record was determined by me or under my direction and control and that this U.S. Public Land Survey Monument Record is correct and complete to the best of my knowledge and belief.

James L. Will Signature
 April 27, 1990 Date



INDEX NO. V-19

3910260020