

# U.S. PUBLIC LAND SURVEY MONUMENT RECORD

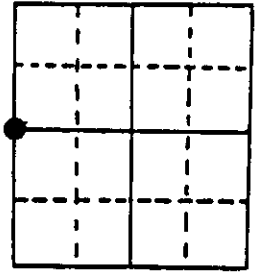
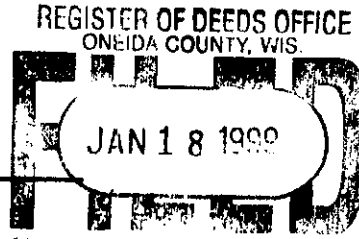
Note: This form is intended and designed to fulfill all requirements of Wisconsin Administrative Code, Chapter A-E 7.08 U.S. Public Land Survey Monument Record (3) (a) (b) (c) (d) (e) (f) (g) (h) (i). An additional sheet may be added if necessary to conform with said requirements.

(a) Corner location: Township 39 North

Range 10 East/West

Town/City/Village THREE LAKES

County ONEIDA



Section 27

(b) (f) (g) (h) Description of monument found at this corner and if it was accepted, state all evidence (material, testimonial, occupational, plats, records, other monuments) used as a basis for accepting. If not accepted or if nothing was found, state evidence used as basis for establishing location. If reestablished through lost corner proportionate methods, indicate all monuments, distances and directions used to establish. Indicate type of monument found or set and sign post.

1863- William Daugherty set wood post.

Original B.T.'s Tamarack 8" S43°E 121ks.  
Spruce 12" S66°W 101ks.

1935- Branham (Book 7 P. 4) set wood post to replace original.

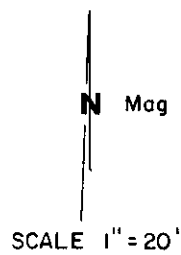
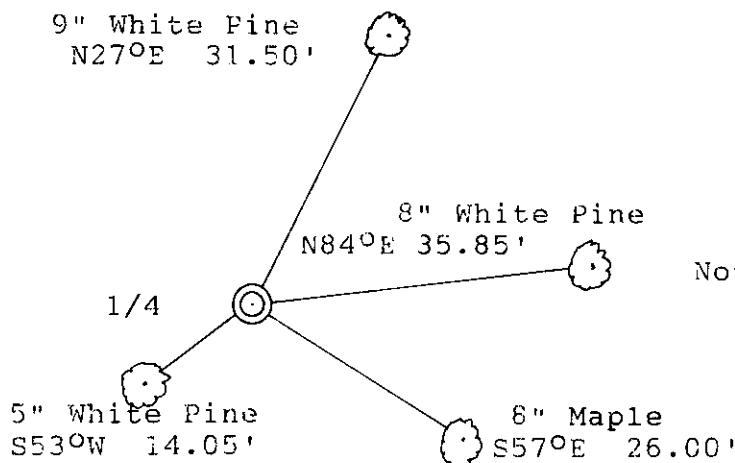
New B.T.'s Tamarack 8" S74°E 101ks.  
Tamarack 8" N42°W 101ks.

1948- Branham set iron pipe at corner position. Gives distance between Section corner and pipe set at this position as 2724 feet. We measure 2723.13 feet.

1998- Found iron pipe and wood post marking corner. Replaced (over)

(c) (d) (e) Plan view of corner with ties to at least 4 witness monuments. If in disagreement with previously established corner, show the distances between the two corners and also indicate the ties to the disputed corner.

Note: Plastic sign post bears North 1.00'.



Note: All measurements are taken to aluminum nail at the base of tree.

(i) I, KIP W. SODER R.L.S. #1731  
(type or print name) certify that the corner location on this record was determined by me or under my direction and control and that this U.S. Public Land Survey Monument Record is correct and complete to the best of my knowledge and belief.

Kip W. Soder Signature Jan. 12, 1999 Date



3910 262000 Stamp

Index No. T 13

---

Branham's iron pipe with a 2-1/2" X 30" Oneida County aluminum capped monument stamped to identify corner. Made new B.T.'s and set plastic sign post North 1.00'.

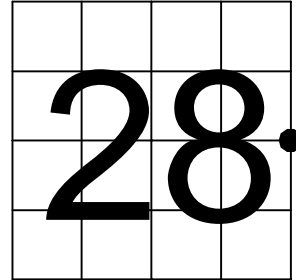
# U.S. PUBLIC LAND SURVEY MONUMENT RECORD

NOTE: This form is intended and designed to fulfill all requirements of Wisconsin Administrative Code, Chapter A-E 7.08 U.S. Public Land Survey Monument Record (3) (a-i)

Oneida County  
Land Information Office  
Filed  
1/13/2026

A-E 7.08(3)(a) Identity of corner:  
East 1/4 Corner Section 28,  
Township 39 North, Range 10 East  
of the Fourth Principal Meridian,  
Town of Sugar Camp, Oneida County,  
Wisconsin

WISCRS - ONEIDA COUNTY  
N: 238,106.405 USft (XXX,XXX.XXX)  
E: 308,287.975 USft (XXX,XXX.XXX)  
Datum: NAD83 (2011)  
GNSS Method RTN  
GNSS Control WISCORS VRS



The coordinate value shown has been verified by the average of two or more GPS observations at a markedly different time. Coordinates shown in parenthesis are previously published values.

A-E 7.08(3)(b)

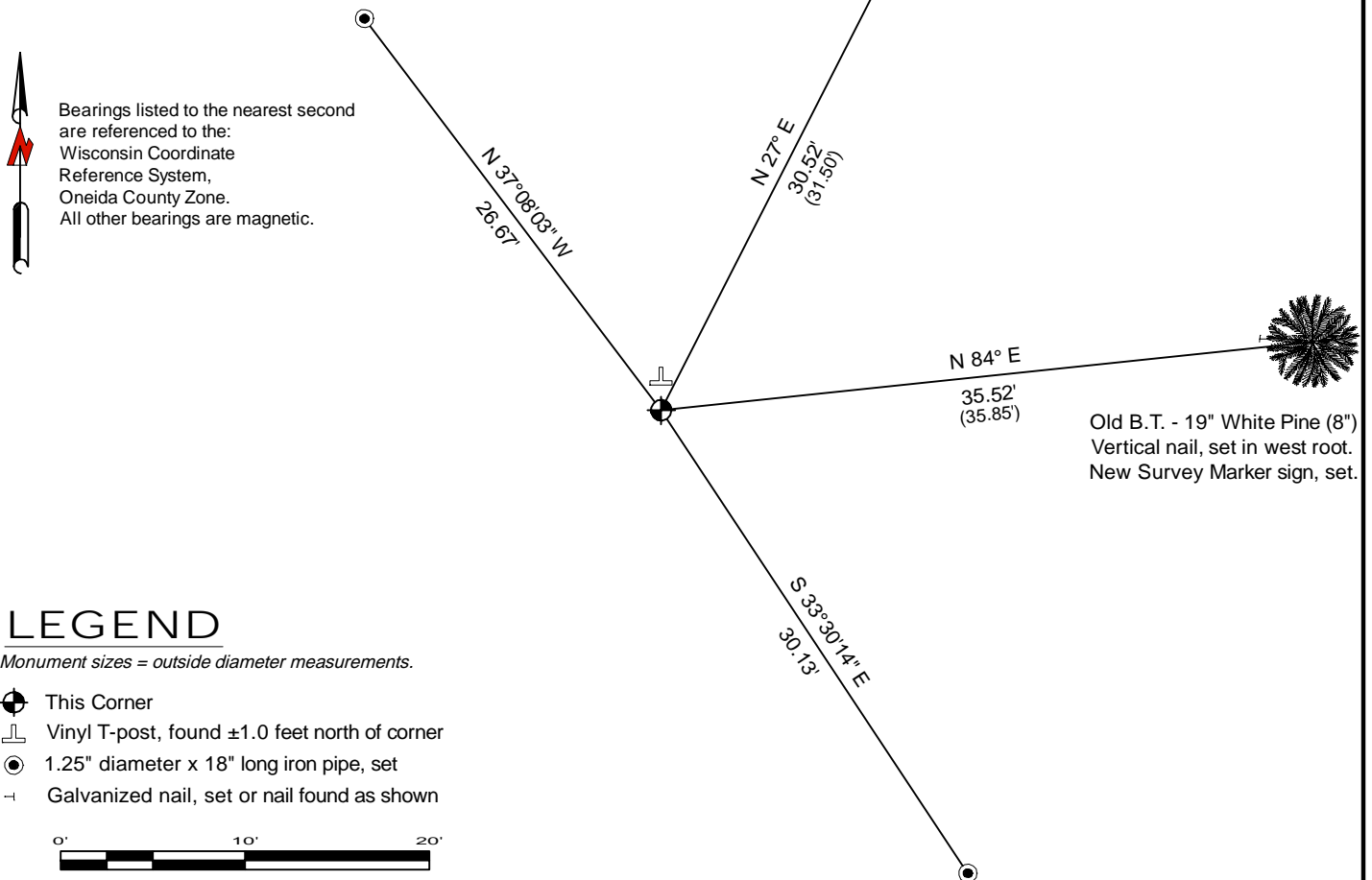
Original Surveyor: William E. Daugherty - September 30, 1863 to October 7, 1863  
Tamarac 8 - S 43° E, 12 Links, Spruce 12 - S 66° W, 10 Links

See previous U.S. Public Land Survey Monument Record - T13 - June 12, 1999 - Surveyor 1731 - Kip W. Soder - THENCE:

- August 23, 2001 - Surveyor 2070 - Michael E. Weber - indicates this position as "Oneida County aluminum monument found in place" on county record Map #A1061.
- December 21, 2001 - Surveyor 1234 - James D. Rein - indicates this position as "Capped 2.4" dia. aluminum monument found in place" on county record Map #B4913.
- July 27, 2015 - Surveyor 2729 - Gregory S. Maines - indicates this position as "Oneida County alum. monument found" on county record Map #B7808.

December 8, 2025 - I found a 2.4" diameter aluminum pipe monument with a 3.25" diameter aluminum cap stamped to identify the corner location. The monument is on high land, and extends ±4" above grade. I also found 2 of Soder's bearing trees alive and in good condition. I established 2 new reference monuments as shown below.

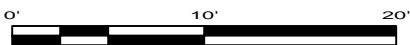
A-E 7.08(3)(c)(d) Plan view of corner with references to at least 4 witness monuments.



## LEGEND

Monument sizes = outside diameter measurements.

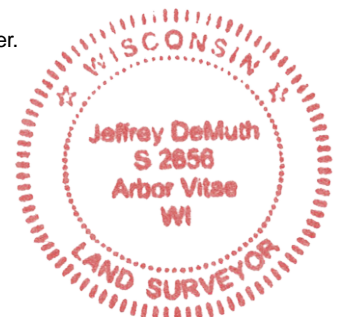
- ⊕ This Corner
- ⊥ Vinyl T-post, found ±1.0 feet north of corner
- 1.25" diameter x 18" long iron pipe, set
- ⊥ Galvanized nail, set or nail found as shown



A-E 7.08(3)(e) 1863 Surveyor set a post, 1999 Surveyor replaced a iron pipe with and aluminum monument, subsequent surveyors found the same, as did I in 2025.

A-E 7.08(3)(f) I accept this monument in good faith as a FOUND PERPETUATED LOCATION of the corner.  
A-E 7.08(3)(g)(h) This corner was not determined through lost-corner-proportionate methods.

A-E 7.08(3)(i) I, Jeffrey L. DeMuth, Professional Land Surveyor No. S-2656, hereby certify that the corner location on this record was determined by me or under my direction and control, and that this U.S. Public Land Survey Monument Record is correct and complete to the best of my knowledge, and belief.



SIGNATURE

December 12, 2025

DATE

43910282000