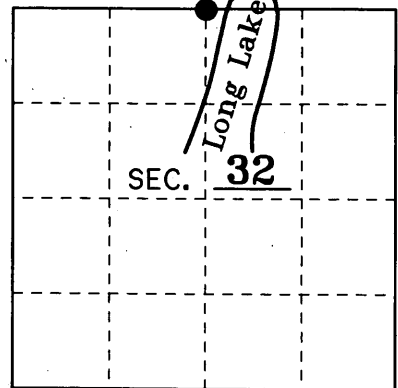


U.S. PUBLIC LAND SURVEY MONUMENT RECORD

Note: This form is intended and designed to fulfill all requirements of Wisconsin Administrative Code, Chapter A-E 7.08 U.S. Public Land Survey Monument Record (3)(a)(b)(c)(d)(e)(f)(g)(h)(i). An additional sheet may be added if necessary to conform with said requirements.

(a) CORNER LOCATION: _____ County or State Plane Coordinates
North 1/4 Corner of Section 32 Northing _____
 Township 39 North Easting _____
 Range 10 East Datum Base _____
 Township/City Sugar Camp County of VILAS



(b) HISTORY OF ORIGINAL CORNER ESTABLISHMENT Original B.T.'s
 Original Surveyor: William E. Daugherty 8" Tamarack N 12°E 19 Lks.
 Date of Survey: Sept-Oct 1863 10" W.Pine South 18 Lks.

(b)(f)(g)(h) Description of monument found at this corner and if it was accepted, state all evidence (material, testimonial, occupational, plats, records, other monuments) used as a basis for accepting. If not accepted or if nothing was found, state evidence used as basis for establishing location. If reestablished through lost corner proportionate methods, indicate all monuments, distances and directions used to establish. Indicate type of monument and sign post found or set.

Dec. 28, 1905: Vaughn found corner ok, no mention of B.T.'s.

Jan. 16, 1959: Loftus found corner and ran North, no mention of B.T.'s. He worked for RIPCO and we assume that is how the RIPCO iron pipe monument was set.

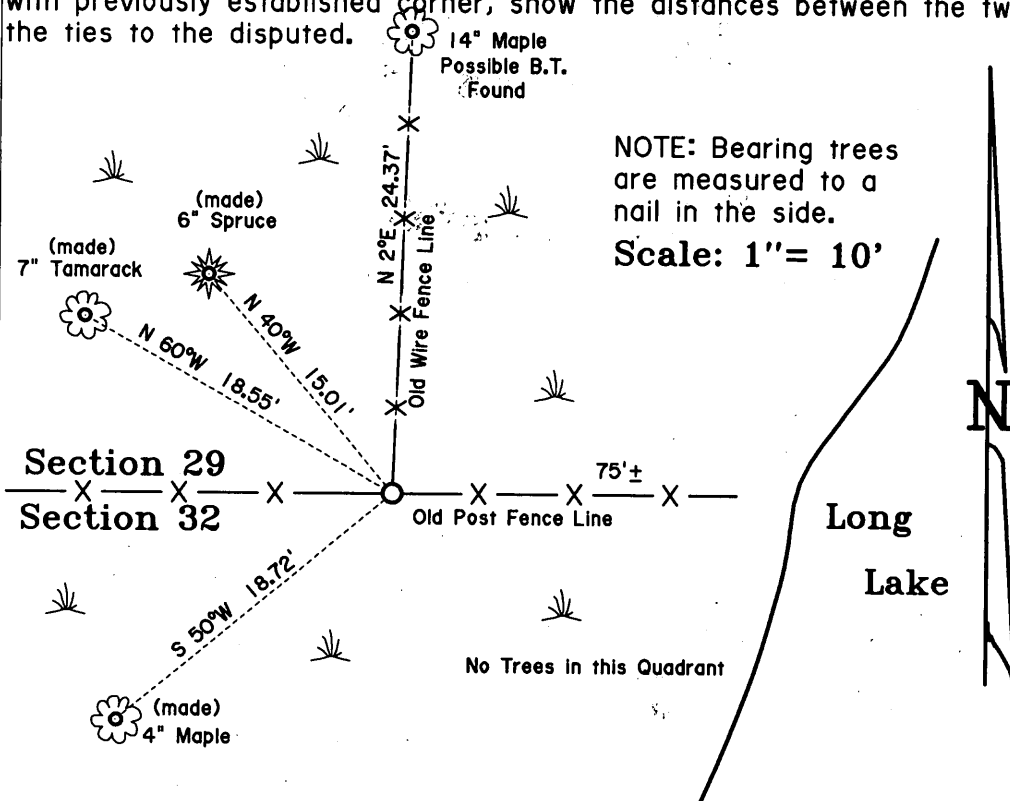
Oct. 8, 1976: Rein finds Ripco's Monument and the following B.T.'s: 10" Popal Stump S 40° W 19.2 feet and a 23-1/2" W. Pine N 2° W 46.2 feet.

June 17, 1982: Bill Badow finds Ripco Monument and uses.

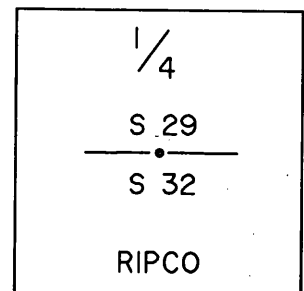
Aug. 8, 1998: Michael Weber finds Ripco Monument and uses.

January 27, 2006: I, Thomas A. Boettcher, found the above described RIPCO 1-1/2" iron pipe with a 3" square brass plate stamped to identify the corner as shown below. The corner is in a marsh along Long Lake and extends 1' high above the marsh surface. A very old post fence line runs East and West from this corner and an old wire fence runs North from this corner. I found 1 possible Maple BT and reblazed it and I made three new BT's with upper and lower blazes. I also found a plastic guard post 6" Southwest of the corner.

(c)(d)(e) Plan view of the corner with ties to at least 4 witness monuments. If in disagreement with previously established corner, show the distances between the two corners and also indicate the ties to the disputed.

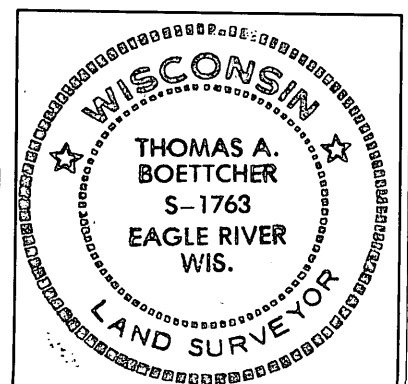


NOTE: Bearing trees are measured to a nail in the side.
 Scale: 1" = 10'



(i) I, Thomas A. Boettcher R.L.S. No. 1763
 hereby certify that the corner location on this record was determined by me or under my direction and control and that this U.S. Public Land Survey Monument Record is correct and complete to the best of my knowledge and belief.

Signature [Signature] Date January 26, 2006



Index No. V-7

3910290020