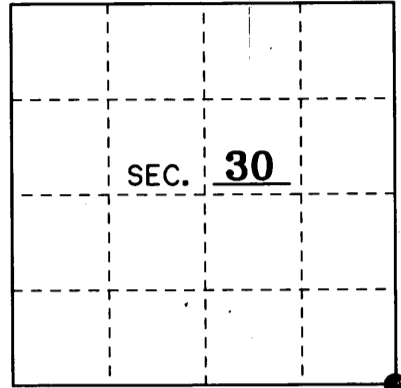


# U.S. PUBLIC LAND SURVEY MONUMENT RECORD

Note: This form is intended and designed to fulfill all requirements of Wisconsin Administrative Code, Chapter A-E 7.08 U.S. Public Land Monument Record (3)(a)(b)(c)(d)(e)(f)(g)(h)(i). An additional sheet may be added if necessary to conform with said requirements.

(a) CORNER LOCATION: Southeast County or State Plane Coordinates  
Section 30 Corner of Section 30 Northing \_\_\_\_\_  
 Township 39 North Easting \_\_\_\_\_  
 Range 10 East Datum Base \_\_\_\_\_  
 Township/City Sugar Camp County of ONEIDA

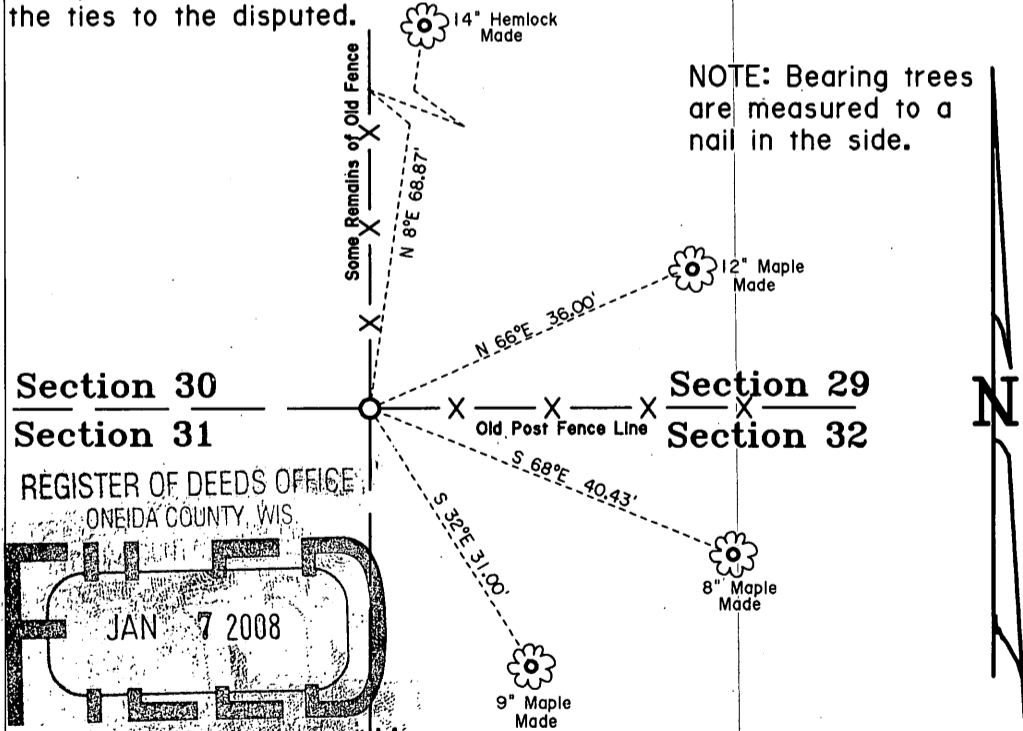


(b) HISTORY OF ORIGINAL CORNER ESTABLISHMENT Original B.T.'s  
 Original Surveyor: William E. Daugherty 10" Birch S 23°E 6 Lks.  
 Date of Survey: Sept-Oct 1863 10" Birch N 5°E 23 Lks.

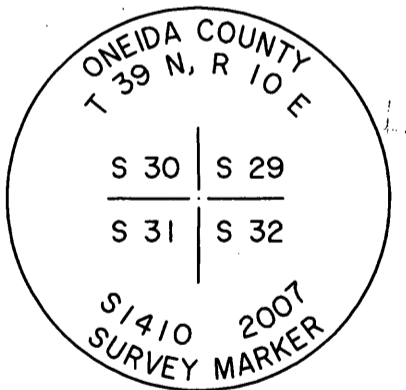
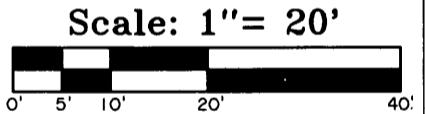
(b)(f)(g)(h) Description of monument found at this corner and if it was accepted, state all evidence (material, testimonial, occupational, plats, records, other monuments) used as a basis for accepting. If not accepted or if nothing was found, state evidence used as basis for establishing location. If reestablished through lost corner proportionate methods, indicate all monuments, distances and directions used to establish. Indicate type of monument and sign post found or set.

Sept. 1863: William E. Daugherty set a wood post and made two B.T.'s for the Section corner in the original survey of T 39 N, R 10 E.  
 x-16-1959: Ripco shows a pipe in their survey and said the pipe was set by Dorr or Vaughn. See Oneida Co file A419.  
 3-11-1993: William E. Bandow found an iron pipe at the Section corner position and uses it to proportion the North 1/4 of Section 31. See corner form for N1/4, Sec 31, T 39 N, R 10 E.  
 12-20-2007: I, James L. Will, found a 1-1/2" iron pipe in swamp 0.9 feet above the ground leaning West. I found no evidence of old B.T.'s. I set a 2" x 36" Oneida County aluminum monument flush stamped to identify the corner as shown below. I made four new B.T.'s and set a sign post 0.6 feet West.

(c)(d)(e) Plan view of the corner with ties to at least 4 witness monuments. If in disagreement with previously established corner, show the distances between the two corners and also indicate the ties to the disputed.



NOTE: Bearing trees are measured to a nail in the side.

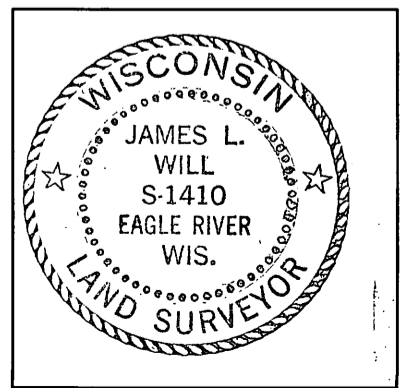


Section 30 Section 29  
 Section 31 Section 32

REGISTER OF DEEDS OFFICE  
 ONEIDA COUNTY, WIS.  
**FILED**  
 JAN 7 2008  
 At \_\_\_\_\_  
**THOMAS H. LEIGHTON**  
 REGISTER OF DEEDS  
 James L. Will

(i) I, \_\_\_\_\_ R.L.S. No. 1410  
 hereby certify that the corner location on this record was determined by me or under my direction and control and that this U.S. Public Land Survey Monument Record is correct and complete to the best of my knowledge and belief.

Signature *James L. Will* Date January 3, 2008



Index No. V-5

3910300000