

U.S. PUBLIC LAND SURVEY MONUMENT RECORD

NOTE: This form is intended and designed to fulfill all requirements of Wisconsin Administrative Code, Chapter A-E 7.08 U.S. Public Land Survey Monument Record (3)(a)(b)(c)(d)(e)(f)(g)(h)(i). An additional sheet may be added if necessary to conform with said requirements.

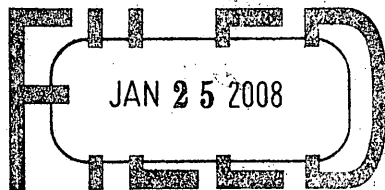
(a) Corner location: Township 39 North

Range 10 East

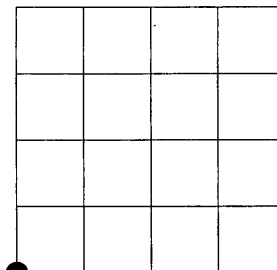
Town of Sugar Camp

Oneida County, Wisconsin

REGISTER OF DEEDS OFFICE
ONEIDA COUNTY, WIS.



At _____ O'Clock _____ M
THOMAS H. LEIGHTON
REGISTER OF DEEDS



Section 33

(b)(f)(g)(h) Description of monument found at this corner and if it was accepted, state all evidence (material, testimonial, occupational, plats, records, other monuments) used as a basis for accepting. If not accepted or if nothing was found, state evidence used as basis for establishing location. If reestablished through lost corner proportionate methods, indicate all monuments, distances and directions used to establish. Indicate type of monument found or set and sign post.

JULY 1859 - HIRAM C. FELLOWS SET POST AT SECTION CORNER (ORIGINAL SURVEYOR)

- BTS: 14" BIRCH N51°W, 69 LINKS
- 15" BIRCH N24°E, 26 LINKS
- 12" BIRCH S17°E, 35 LINKS
- 12" BIRCH S73°W, 22 LINKS

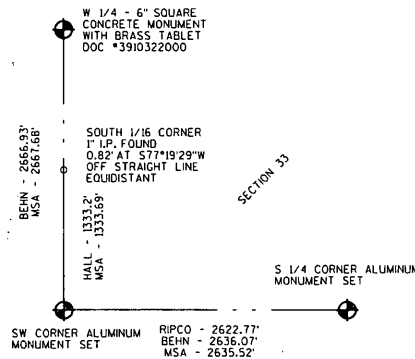
DEC. 1905 - D.H. VAUGHAN SET POST FROM ORIGINAL BT REMAINS. (VAUGHAN FB#5, PG.41)

1933 - H.C. HALL FOUND CORNER. MARKED NEW BTS. (HALL BOOK, PG.327)

JAN. 1965 - RIPCO RAN FROM SW CORNER OF SECTION 33 EAST TO S1/4. (RIPCO FB#4, PG.105)

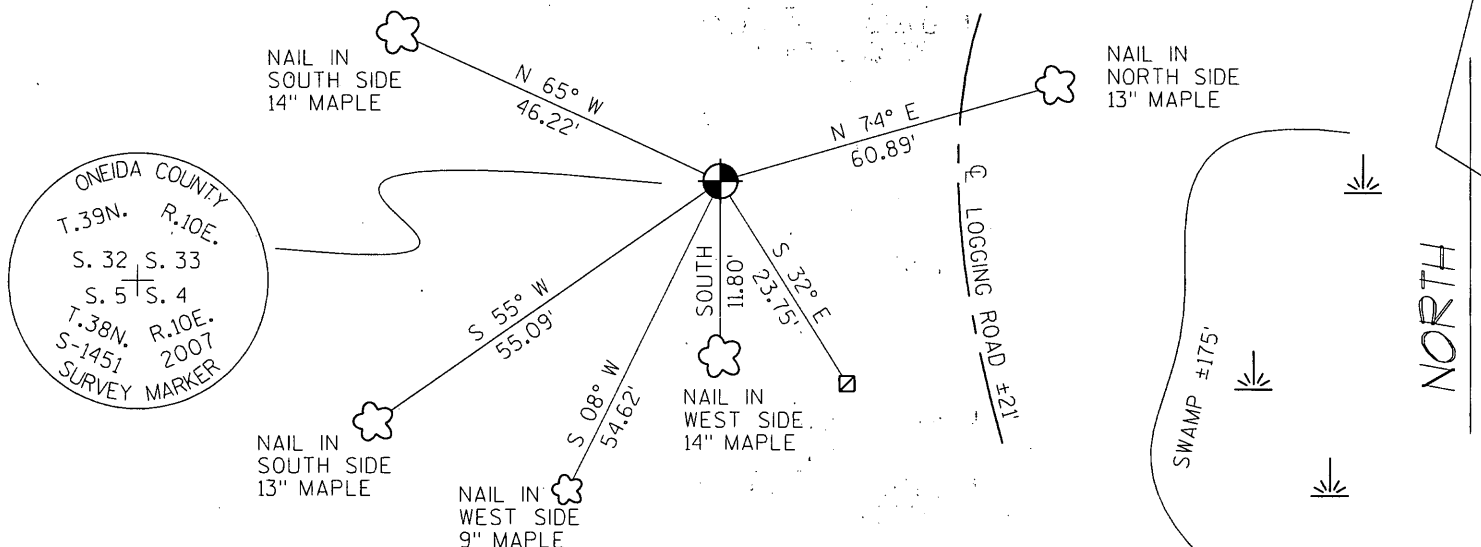
AUG. 1976 - HAROLD W. BEHN SET 1 1/2" IRON PIPE FLUSH FROM HALL'S BTS. (MAP #B876)
MARKED NEW BTS

DEC. 2007 - I FOUND 1 1/2" IRON PIPE FLUSH WITH GROUND.
I FOUND NO EVIDENCE OF BTS FROM PREVIOUS SURVEYORS.
FOUND RIPCO MONUMENT STAMPED AS SW CORNER OF SECTION 33.
RESEARCHED RECORDS, FOUND NOTHING EXPLAINING HOW IT WAS SET.
FIELD MEASUREMENTS SUPPORTED 1 1/2" IRON PIPE FOUND.
I ACCEPTED 1 1/2" IRON PIPE, BY BEHN.
REPLACED WITH ONEIDA COUNTY MONUMENT.
MARKED NEW BTS AS SHOWN BELOW.



(c)(d)(e) Plan view of corner with ties to at least 4 witness monuments. If in disagreement with previously established corner, show the distances between the two corners and also indicate the ties to the disputed corner.

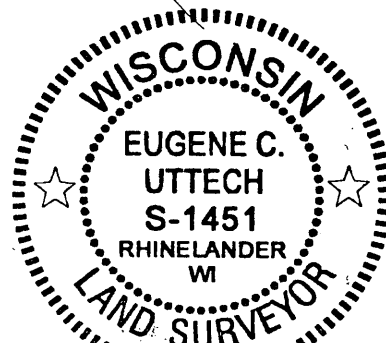
- 2" ALUMINUM ONEIDA COUNTY MONUMENT WITH 3" STAMPED CAP
- 1" I.P. FOUND WITH 3" SQUARE TABLET STAMPED RIPCO, ERRONEOUS



(i) I, Eugene Uttech, Registered Land Surveyor #S-1451, hereby certify that the corner location on this record was determined by me or under my direction and control and that this U.S. Public Land Survey Monument Record is correct and complete to the best of my knowledge and belief.

Eugene C. Uttech
Signature

12.07.07
Date



3910320000

Index No. Z-9

