

U.S. PUBLIC LAND SURVEY MONUMENT LOCATION RECORD

Recorders Data

CORNER: West 1/4 Corner SECTION: 33 TOWNSHIP 39 NORTH RANGE 10 EAST/WEST

FOR M.C. CORNER INDICATE: NAME OF WATERWAY N/A SECTION LINE N/A

(CITY)(VILLAGE)(TOWN) OF: Sugar Camp COUNTY OF: Oneida

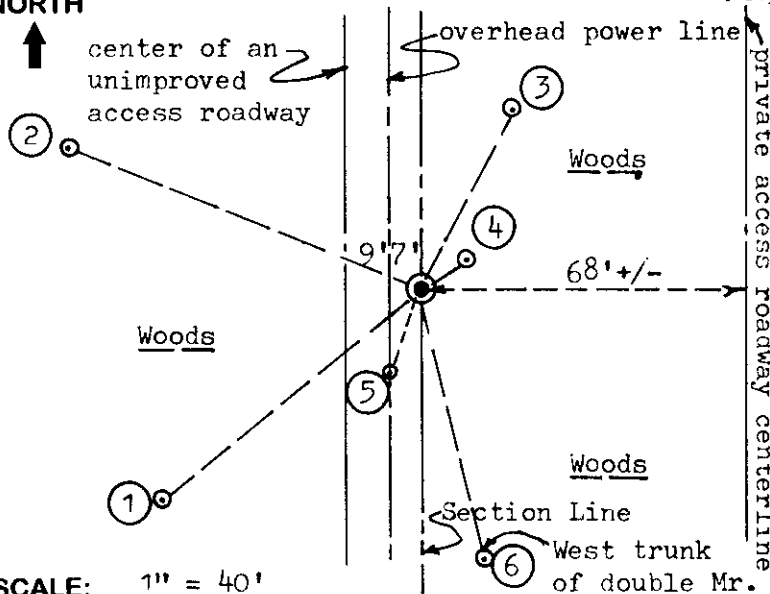
Description of monument found or placed and all other evidence used as a basis for monument location; including all monuments and related measurements required if the corner location is reestablished by lost corner proportionate methods. Also indicate name of original surveyor, survey date, corner monument set and established bearing trees, witness or reference monuments with ties from available records.

Found and accepted an old 6" square concrete monument with a stamped 3/8" dia. Oneida County brass tablet in top 5"+/- above existing grade at this corner location. In October, 1863, William Daugherty/GLO set a wood post at this corner and marked two(2) OBTs, a 10" Hemlock S09°E 32 lks and a 9" Bw N43°W 17 lks; all are now obliterated. In 1905, Vaughn notes he set a new wood post in old original GLO post hole from OBTs and marked new BTs, a 10" Bw N27°W 35 lks and a 14" Hemlock S1/2°W 13 lks, which are all now obliterated. In 1933, Hall set subject concrete post monument at this corner from original GLO survey SE Hemlock OBT with BT scribe he had found; he noted no new BTs. In 1954, Wincentzen found and accepted Halls 1933 concrete corner monument and noted no new BTs.

This recovery completed April 24, 1998; there were no witnesses.

Plan view map of monument location with bearing and distance ties to a minimum of four(4) described witness or reference monuments of concrete, natural stone, iron, live bearing trees or equivalent material. If applicable, also show a minimum of two(2) bearing and distance ties to any other monument found and not accepted; including the bearing and distance from the accepted monument. Indicate the basis for bearings of reference ties if not referenced to magnetic north.

NORTH



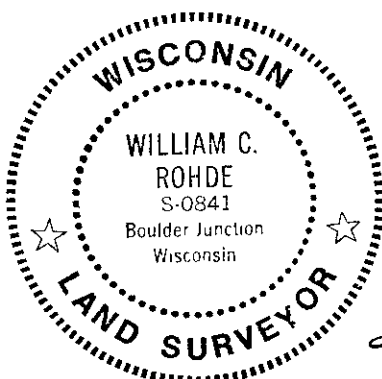
WITNESS MONUMENT TIES:

- ① New BT 11" Mr S51°W 69.69'.
- ② New BT 11" Mr N68°W 79.36'.
- ③ New BT 15" Mr N27°E 41.85'.
- ④ 1/2" dia. by 1/2" deep drill hole in high point of a 2 1/2' by 4' rock boulder with orange paint keel cross, N55°E 11.17'.
- ⑤ Existing power pole S24°W 18.5'.
- ⑥ New BT 11" Mr S12°E 57.10'.

Note: I also found and reset standard white poly 'T' marker post 7" East of corner monument. The corner is accessible by vehicle 250' North of Columbus Road.

SCALE: 1" = 40'

Unless otherwise indicated, all bearing tree ties are to a .25" dia. by 2.5" long PK nail with a 1.25" dia. steel washer driven into unblazed right face and a .25" dia. by 2.5" long PK nail with a 2" dia. steel washer stamped 'BT' is also driven into unblazed face of bearing tree at DBH; the basis for measured bearings is magnetic to nearest degree and all tie distances are horizontal measure to nearest 1/100th feet.



LAND SURVEYOR CERTIFICATION:

I, William C. Rohde, hereby certify that I am a duly licensed Professional Land Surveyor in Wisconsin, that this USPLS monument location was determined by me or under my direction and control, and that this U.S. Public Land Survey Monument Location Record is true and correct to the best of my knowledge and belief.

William C. Rohde Date: 5-4-98
Signature

		33	

INDEX NO.

RLS SEAL

SHEET NO. 1 OF 1

This form is intended to fulfill requirements of Chapter A-E 7.08 (3)(a)(b)(c)(d)(e)(f)(g)(h)(i) U.S. Public Land Survey Monument Location Record, Wisconsin Administrative Code. Use reverse side for geodetic location data and/or continuation purposes.

SECTION LOCATION MAP

INDEX NO. X 9
3910322000