

# U.S. PUBLIC LAND SURVEY MONUMENT LOCATION RECORD

Recorders Data

CORNER: South MC SECTION: 33 TOWNSHIP 39 NORTH RANGE 10 EAST WEST

FOR M.C. CORNER INDICATE: NAME OF WATERWAY Columbus Lake SECTION LINE West

(CITY)(VILLAGE)(TOWN) OF: Sugar Camp COUNTY OF: Oneida

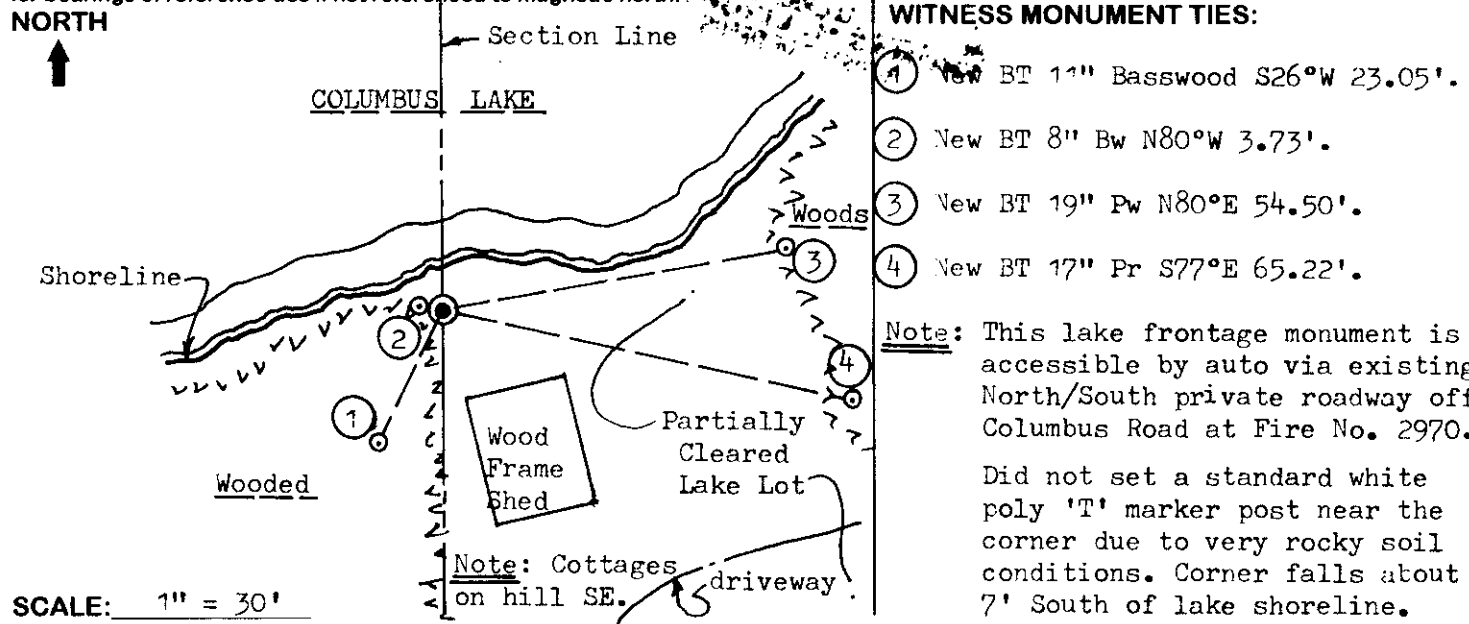
Description of monument found or placed and all other evidence used as a basis for monument location; including all monuments and related measurements required if the corner location is reestablished by lost corner proportionate methods. Also indicate name of original surveyor, survey date, corner monument set and established bearing trees, witness or reference monuments with ties from available records.

Found and accepted an old undisturbed 6" square concrete monument with a stamped 3 1/2" dia. Oneida County brass tablet in top 13" above existing grade at this corner location and about 7' South of existing Columbus Lake shoreline. In October, 1863, William Daugherty/GLO set a wood post at this corner and marked two(?) OBTs, a 16" Hemlock S13°W 24 lks and a 7" Hemlock S24°E 24 lks, which are all now obliterated. In 1933, Hall set subject concrete monument at this corner location from original GLO survey SW Hemlock OBT stump he had found; he noted no new BTs. In 1954, Wincentzen found and accepted Halls concrete monument at this corner and also noted no new BTs.

This recovery was completed April 24, 1998; there were no witnesses.

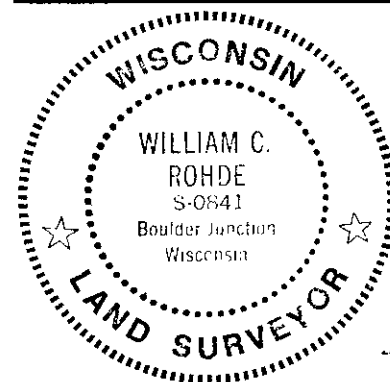
Note: The remains of a nearly obliterated tree root crown hummock was found nearly at the location for original GLO SW Hemlock OBT.

Plan view map of monument location with bearing and distance ties to a minimum of four(4) described witness or reference monuments of concrete, natural stone, iron, live bearing trees or equivalent material. If applicable, also show a minimum of two(2) bearing and distance ties to any other monument found and not accepted; including the bearing and distance from the accepted monument. Indicate the basis for bearings of reference ties if not referenced to magnetic north.



SCALE: 1" = 30'

Unless otherwise indicated, all bearing tree ties are to a .25" dia. by 2.5" long PK nail with a 1.25" dia. steel washer driven into unblazed right face and a .25" dia. by 2.5" long PK nail with a 2" dia. steel washer stamped 'BT' is also driven into unblazed face of bearing tree at DBH; the basis for measured bearings is magnetic to nearest degree and all tie distances are horizontal measure to nearest 1/100th feet.



**LAND SURVEYOR CERTIFICATION:**

I, William C. Rohde, hereby certify that I am a duly licensed Professional Land Surveyor in Wisconsin, that this USPLS monument location was determined by me or under my direction and control, and that this U.S. Public Land Survey Monument Location Record is true and correct to the best of my knowledge and belief.

William C. Rohde Date: 5-3-98  
Signature

		33	

**SECTION LOCATION MAP**

INDEX NO. V-w 9  
3910323100

RLS SEAL

SHEET NO. 1 OF 1

This form is intended to fulfill requirements of Chapter A-E 7.08 (3)(a)(b)(c)(d)(e)(f)(g)(h)(i) U.S. Public Land Survey Monument Location Record, Wisconsin Administrative Code. Use reverse side for geodetic location data and/or continuation purposes.

INDEX NO.