

At _____ O'Clock _____ M
THOMAS H. LEIGHTON
REGISTER OF DEEDS

U.S. PUBLIC LAND SURVEY MONUMENT RECORD

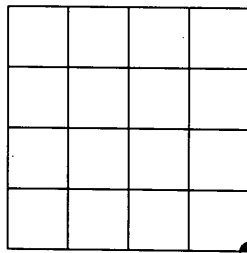
Note: This form is intended and designed to fulfill all requirements of the Wisconsin Administrative Code, Chapter A-E 7.08 U.S. Public Land Monument Record (3)(a)(b)(c)(d)(e)(f)(g)(h)(i). An additional sheet may be added if necessary to conform with said requirements.

(a) CORNER LOCATION:

SE corner of Sec.33
Township 39 North
Range 10 East
Town of Sugar Camp
County of Oneida

COORDINATES - Oneida Co. Grid

Corner = North: 229976.3793
East: 308270.90870
Control Station = 244
Latitude: 45°49'1.44434"
Longitude: 89°13'35.28825"
Datum: NAD 83-91 Method: RTK Direct



SECTION 33

(b) HISTORY OF ORIGINAL CORNER ESTABLISHMENT

Original Surveyor: Hiram C. Fellows
Date of Survey: July, 1859

Original B.T.'S
7" Tamarack; N61°W, 43 links
6" Tamarack; N43°E, 27 links

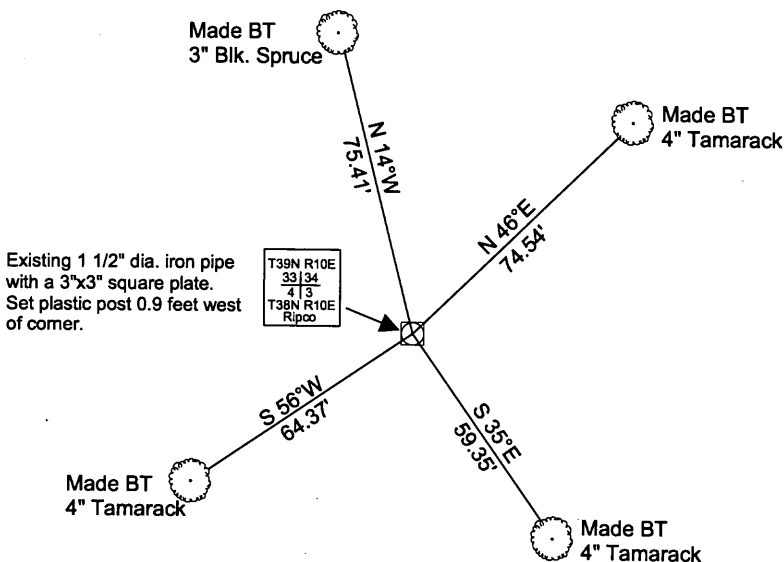
(f)(g)(h) DESCRIPTION OF MONUMENT FOUND AT THIS CORNER AND IF IT WAS ACCEPTED, STATE ALL EVIDENCE (MATERIAL, TESTIMONIAL, OCCUPATIONS, PLATS, RECORDS, OTHER MONUMENTS) USED AS A BASIS FOR ESTABLISHING LOCATION. IF NOT ACCEPTED OR IF NOTHING WAS FOUND, STATE EVIDENCE USED AS BASIS FOR ESTABLISHING LOCATION. IF REESTABLISHED THROUGH LOST CORNER PROPORTIONATE METHODS, INDICATE ALL MONUMENTS, DISTANCES AND DIRECTIONS USED TO ESTABLISH. INDICATE TYPE OF MONUMENT AND SIGN POST FOUND OR SET.

August 18, 1976: Survey map by Harold W. Behn, Registered Land Surveyor No. S-1221, indicates a 3" x 3" stamped plate on a 1 1/2" dia. iron pipe and an old wood post found in place. Set a new Tamarack post. No mention of any bearing trees.

December 19, 2001: James D. Rein, Registered Land Surveyor No. S-1234, recovered a 3" x 3" stamped plate on a 1 1/2" dia. iron pipe and a old wood post rotted and broken off. Set a plastic marker stake 0.9 feet west of corner. See diagram for new bearing trees.

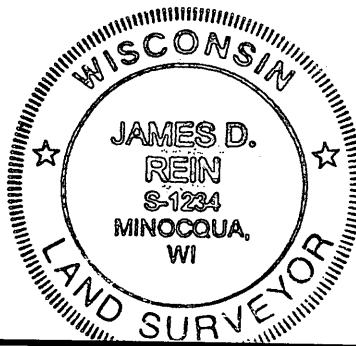
(c)(d)(e) PLAN VIEW OF CORNER WITH TIES TO AT LEAST 4 WITNESS MONUMENTS. IF IN DISAGREEMENT WITH PREVIOUSLY ESTABLISHED CORNER, SHOW THE DISTANCE BETWEEN THE TWO CORNERS AND ALSO INDICATE THE TIES TO THE DISPUTED CORNER.

All bearings are magnetic
Scale: 1" = 50'
Note: all distances are to aluminum nails in side of trees



(i) I, JAMES D. REIN, REGISTERED LAND SURVEYOR NO. S-1234 HEREBY CERTIFY THAT THE CORNER LOCATION ON THIS RECORD WAS DETERMINED BY ME OR UNDER MY DIRECTION AND CONTROL AND THAT THIS U.S. PUBLIC LAND SURVEY MONUMENT RECORD IS CORRECT AND COMPLETE TO THE BEST OF MY KNOWLEDGE AND BELIEF.

SIGNATURE
4/27/02
DATE



INDEX NO. 2-13