

U.S. PUBLIC LAND SURVEY MONUMENT RECORD

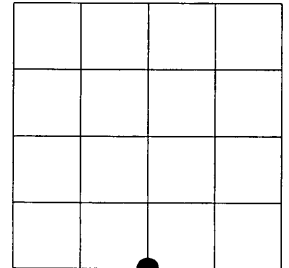
NOTE: This form is intended and designed to fulfill all requirements of Wisconsin Administrative Code, Chapter A-E 7.08 U.S. Public Land Survey Monument Record (3)(a)(b)(c)(d)(e)(f)(g)(h)(i). An additional sheet may be added if necessary to conform with said requirements.

(a) Corner location: Township 39 North

Range 10 East

Town of Sugar Camp

Oneida County, Wisconsin



Section 33

(b)(f)(g)(h) Description of monument found at this corner and if it was accepted, state all evidence (material, testimonial, occupational, plats, records, other monuments) used as a basis for accepting. If not accepted or if nothing was found, state evidence used as basis for establishing location. If reestablished through lost corner proportionate methods, indicate all monuments, distances and directions used to establish. Indicate type of monument found or set and sign post.

JULY 1859 - HIRAM C. FELLOWS SET POST AT 1/4 CORNER (ORIGINAL SURVEYOR)
 BTS: 12" BIRCH S15°W, 9 LINKS
 7" BIRCH N20°E, 10 LINKS

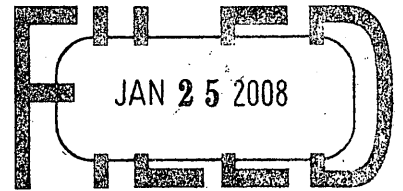
DEC. 1904 - D.H. VAUGHAN SET POST FROM ORIGINAL BTS (VAUGHAN FB#5, PG.42)

AUG. 1976 - HAROLD W. BEHN FOUND 3/4" IRON PIPE (MAP #B876)
 BTS: FOUND 23 Y. BIRCH (ORIGINAL) N39°E, 6.9'
 23" HEMLOCK S88°W, 36.9'

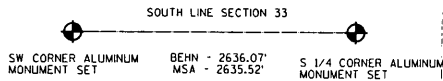
APRIL 2007 - JAMES D. REIN FOUND 3/4" IRON PIPE (MAP #B5001)

DEC. 2007 - I FOUND 3/4" IRON PIPE BENT. REPLACED WITH ONEIDA COUNTY MONUMENT.
 FOUND BTS AS SHOWN BELOW. MADE NEW BTS AS SHOWN BELOW.

REGISTER OF DEEDS OFFICE
 ONEIDA COUNTY, WIS.

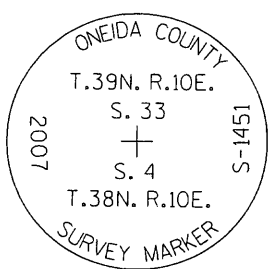
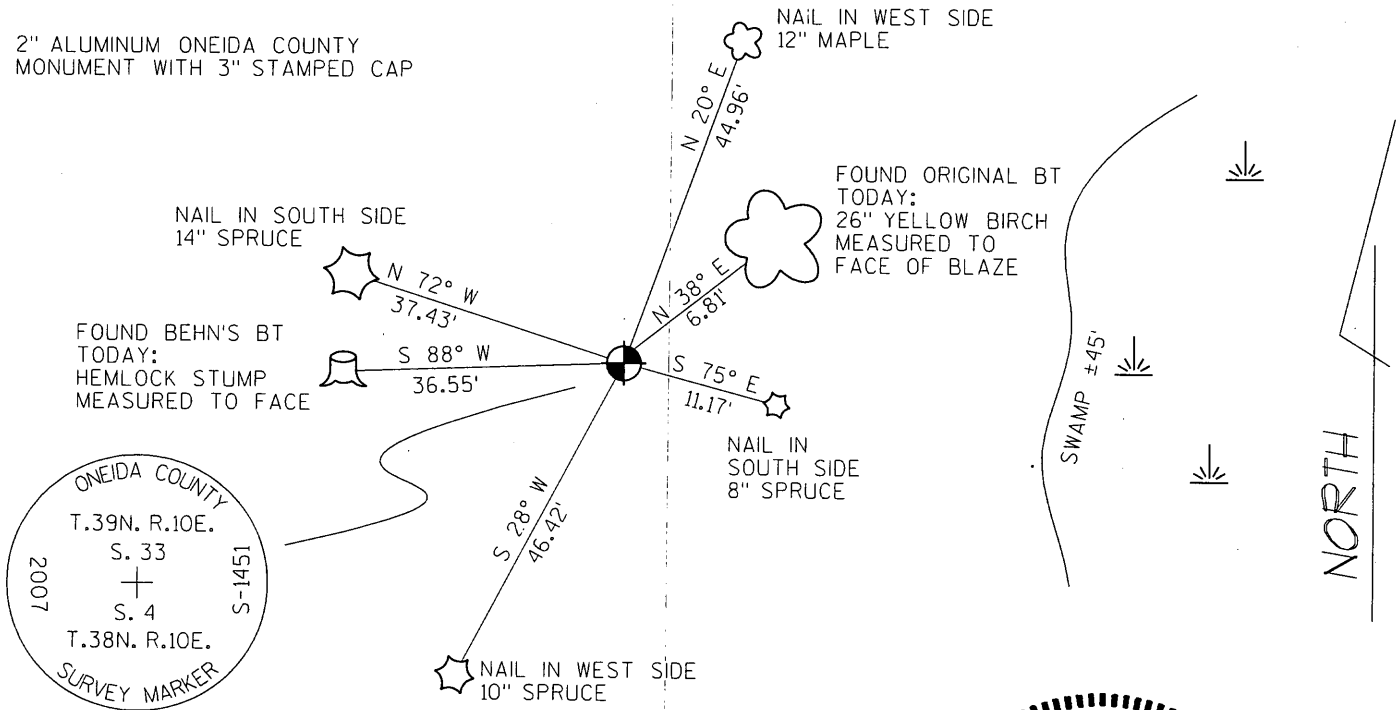


At _____ O'Clock _____ M
THOMAS H. LEIGHTON
 REGISTER OF DEEDS



(c)(d)(e) Plan view of corner with ties to at least 4 witness monuments. If in disagreement with previously established corner, show the distances between the two corners and also indicate the ties to the disputed corner.

2" ALUMINUM ONEIDA COUNTY MONUMENT WITH 3" STAMPED CAP



(i) I, Eugene Uttech, Registered Land Surveyor #S-1451, hereby certify that the corner location on this record was determined by me or under my direction and control and that this U.S. Public Land Survey Monument Record is correct and complete to the best of my knowledge and belief.

Eugene C Uttech
 Signature

12.11.07
 Date



Index No. Z-11

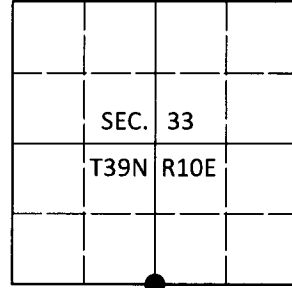
3910330020

U.S. PUBLIC LAND SURVEY MONUMENT RECORD

Note: This form is intended and designed to fulfill all requirements of Wisconsin Administrative Code, Chapter A-E 7.08 U.S. Public Land Survey Monument Record (3)(a-i).

(a) CORNER LOCATION
 1/4 Cor. of Secs. 4 & 33
 Township 38 & 39 North
 Range 10 East of the 4th P.M.
 Town of Sugar Camp
 County of Oneida

WISCRS - Oneida County
 N: 230,037.44 USft
 E: 305,598.85 USft
 Datum: NAD83(2011)
 GNSS Method: RTN - Direct
 GNSS Control: WISCORS VRS



(b) HISTORY OF ORIGINAL CORNER ESTABLISHMENT

Original Surveyor:

Original Accessories:

Date of Survey Commenced:
 Completed:

See previous monument record(s)

(b)(f)(g)(h) Description of monument found at this corner and if it was accepted, state all evidence (material, testimonial, occupational, plats, records, other monuments) used as a basis for accepting. If not accepted or if nothing was found, state evidence used as basis for establishing location. If re-established through lost corner proportionate methods, indicate all monuments, distances and directions used to establish. Indicate type of monument and sign post found or set.

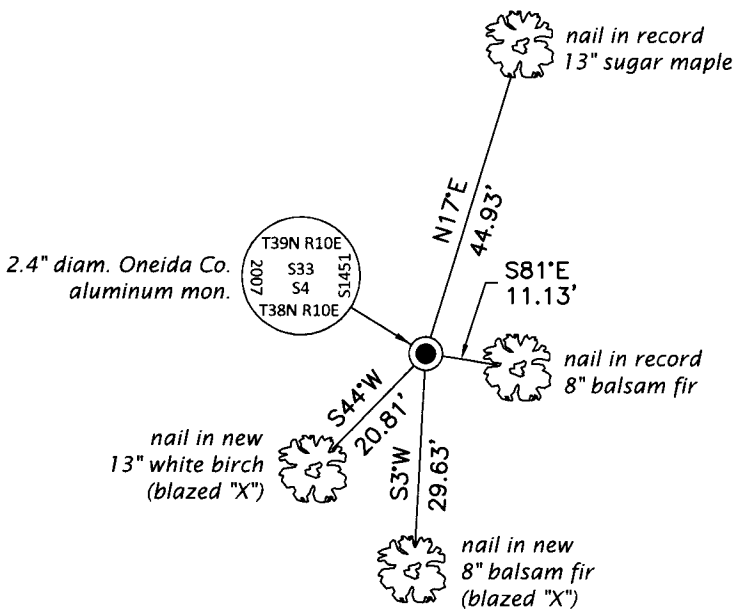
This is a perpetuation of the following monument record(s) that comprise a complete history of the corner:

Dec. 11, 2007: USPLS Monument Record No. 3910330020 by Eugene C. Uttech, RLS

Jul. 9, 2019: I found and accepted the record monument, a 2.4" diam. aluminum pipe with a 3.3" diam. Oneida Co. aluminum cap projecting 3" above the ground surface. The record bearing trees at S28°W and N72°W are down. The GLO yellow birch (now 26") is still green at N35°E, 10 lks. I found or established accessories as shown below. I found no sign post at the corner point.

The coordinate value shown has been verified by at least one of the following methods: 1) comparison to a previously GPS determined published value; 2) the value is the average of two or more GPS observations at a markedly different time; 3) one or more distances were measured back to the GPS observed corner from temporary GPS observed offset locations.

(c)(d)(e) Plan view of corner with ties to at least 4 witness monuments. If in disagreement with previously established corner, show the distances between the two corners and also indicate the ties to the disputed.



Magnetic
1" = 30'

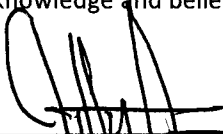


REGISTER OF DEEDS OFFICE
 ONEIDA COUNTY
 FILED

AUG 28 2019

KYLE J. FRANSON
 REGISTER OF DEEDS

(i) I, Jeffrey W. Austin, Professional Land Surveyor No. S-1885, hereby certify that the corner location on this record was determined by me or under my direction and control and that this U.S. Public Land Survey Monument Record is correct and complete to the best of my knowledge and belief.



 Signature

JUL. 26, 2019

 Date