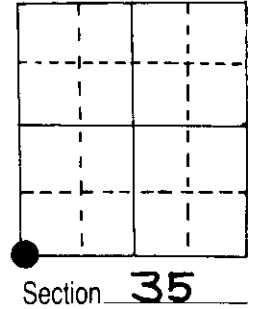


U.S. PUBLIC LAND SURVEY MONUMENT RECORD

Note: This form is intended and designed to fulfill all requirements of Wisconsin Administrative Code, Chapter A-E 5.02, U.S. Public Land Survey Monument Record (3) (a) (b) (c) (d) (e) (f) (g) (h) (i). An additional sheet may be added if necessary to conform with said requirements.

(a) Corner location: Township 39 North
 Range 10 East ~~West~~

Town/~~City/Village~~ Three Lakes
 County Oneida



(b) (f) (g) (h) Description of monument found at this corner and if it was accepted, state all evidence (material, testimonial, occupational, plats, records, other monuments) used as a basis for accepting. If not accepted or if nothing was found, state evidence used as basis for establishing location. If reestablished through lost corner proportionate methods, indicate all monuments, distances and directions used to establish.

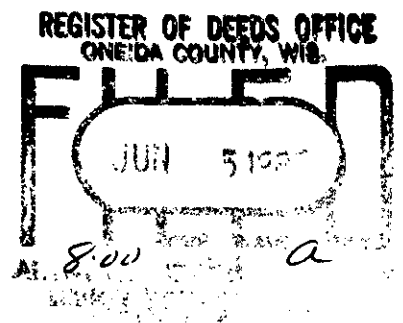
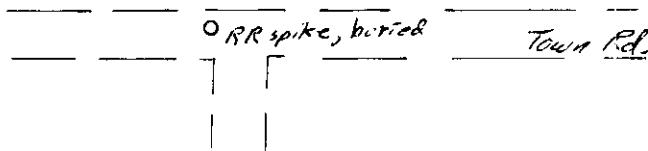
IN 1976, Seymour & Gerhig found RR spike buried in road with a 1/2" iron pipe with mushroom type aluminum cap stamped W.C. cor 30 LKS south, RIPCO.
 This 1/2" i.p. is north of road.

In 1987 Seymour found RR spike and W.C. and added a steel post w/aluminum tag
 next to 1/2" i.p.

There is nothing but marsh around here, but this location probably should be further verified.

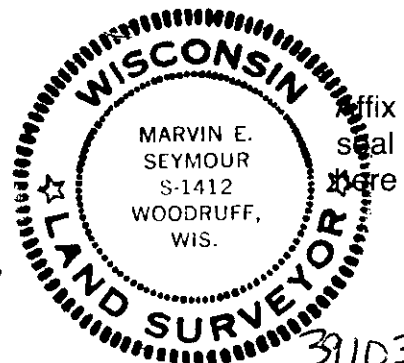
(c) (d) (e) Plan view of corner with ties to at least 4 witness monuments. If in disagreement with previously established corner, show the distances between the two corners and also indicate the ties to the disputed corner.

sign post w/alum tag
 ○ witness monument, RIPCO
 30 links north of corner



(i) I, Marvin E. Seymour
 (type or print name) certify that the corner location on this record was determined by me or under my direction and control and that this U.S. Public Land Survey Monument Record is correct and complete to the best of my knowledge and belief.

Marvin E. Seymour May 18, 1987
 Signature Date



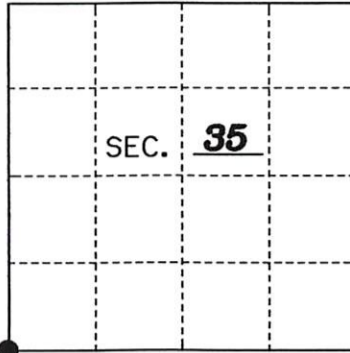
3910340000

2-1-17

U.S. PUBLIC LAND SURVEY MONUMENT RECORD

Note: This form is intended and designed to fulfill all requirements of Wisconsin Administrative Code, Chapter A-E 7.08 U.S. Public Land Monument Record (3)(a)(b)(c)(d)(e)(f)(g)(h)(i). An additional sheet may be added if necessary to conform with said requirements. Deeds Square

(a) CORNER LOCATION: Southwest
 Section Corner of Section 35
 Township 39 North, Range 10 East
 Township/City Three Lakes
 County of Oneida



REGISTER OF DEEDS OFFICE
 ONEIDA COUNTY
 FILED

 JAN 22 2021

 KYLE J. FRANSON
 REGISTER OF DEEDS

 NAD 83 (2011)

(b) HISTORY OF ORIGINAL ESTABLISHMENT
 Original Surveyor: William E. Daugherty
 Date of Survey: 1863
 Original B.T.'s: 6" Tamarack S49°W 155 lks
No other new

The coordinate values shown have been determined by the average of multiple RTK GPS observations taken initially and returning to the site on a different day at a different time and taking additional multiple RTK GPS observations and averaging those with the initial observations.

County or State Plane Coordinates
 Northing 229835.376
 Easting 313595.319
 Datum Base WISCORS-ONEIDA GRID

(b)(f)(g)(h) Description of monument found at this corner and if it was accepted, state all evidence (material, testimonial, occupational, plats, records, other monuments) used as a basis for accepting. If not accepted or if nothing was found, state evidence used as basis for establishing location. If reestablished through lost corner proportionate methods, indicate all monuments, distances and directions used to establish. Indicate type of monument and sign post found or set.

As part of an Oneida County Land Information Office contract to preserve Public Land Survey System corners in roadways that may be obliterated due to road resurfacing, I have performed the following corner maintenance as described below:

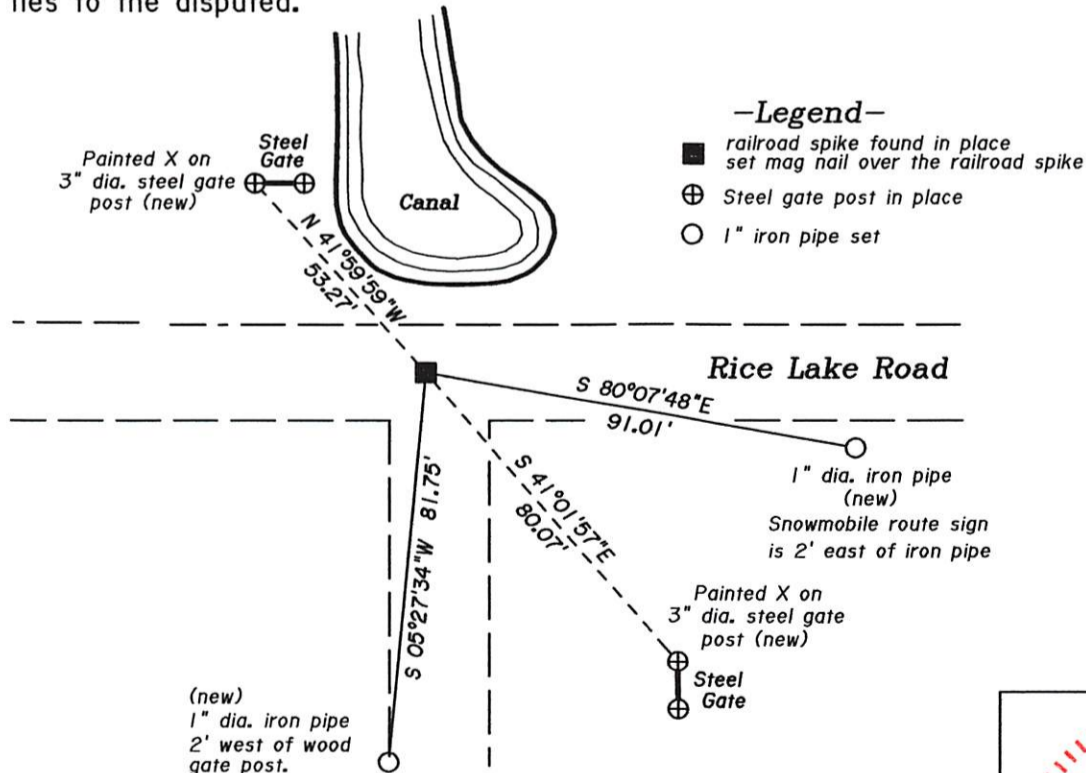
1976: Seymour & Gerhig find a railroad spike buried in the road with a 1/2" iron pipe aluminum cap monument with aluminum cap stamped W.C. cor. 30 lks. South, RIPCO. 1/2" ip monument is north of the road.

1987: Seymour finds the railroad spike and the W.C. and added a steel sign post with aluminum tag next to the 1/2" iron pipe.

June 3, 2019: Thomas Boettcher of Eagle Landmark Surveying finds the railroad spike 2' south of the centerline of the east-west road and 3' west of the centerline of the south road and 10" below the surface. W.C. is gone but found base of steel sign post 20.8 feet north of the corner. Established reference ties for railroad spike as shown below:

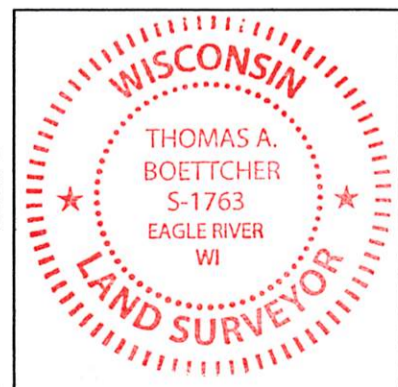
December 2020: Thomas Boettcher and Kip Soder returned to the site and checked the witnesses to the corner. We set a magnetic P.K. nail over the railroad spike from the reference monuments and took a series of RTK GPS observations to average with the previous observations. We set a plastic guard post S 60°W 30 feet from the corner.

(c)(d)(e) Plan view of the corner with ties to at least 4 witness monuments. If in disagreement with previously established corner, show the distances between the two corners and also indicate the ties to the disputed.



(i) I, Thomas A. Boettcher P.L.S. No. 1763
 hereby certify that the corner location on this record was determined by me or under my direction and control and that this U.S. Public Land Survey Monument Record is correct and complete to the best of my knowledge and belief.

Signature [Signature] Date December 23, 2020



Index No. 3910340000