

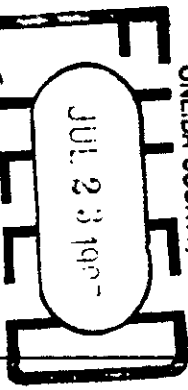
State of Wisconsin

County of Oneida } ss.

I, James L. Will, do hereby certify that on the 29th day of June, 19 87, I found evidence of the Southeast Section corner of Section 76 Township 70 North, Range 10 East, Fourth Principal Meridian, as described hereon; and that from this evidence I established a new monument and accessories as described hereon to perpetuate the original location of this corner.

Resident witnesses: Michael E. Weber

REGISTER OF DEEDS OFFICE ONEIDA COUNTY, WIS.



8:50 O'clock 9 M. DORIS VERABE KUEHN REGISTER OF DEEDS

U. S. Public Land Survey Monument Record

Index No. Z-25

History of original corner establishment:

Original corner was established during the course of the exterior of T 39 N, R 10 E, of which the south line was done July 21 822, 1859 by Hiram G. Fellows, Deputy Surveyor.

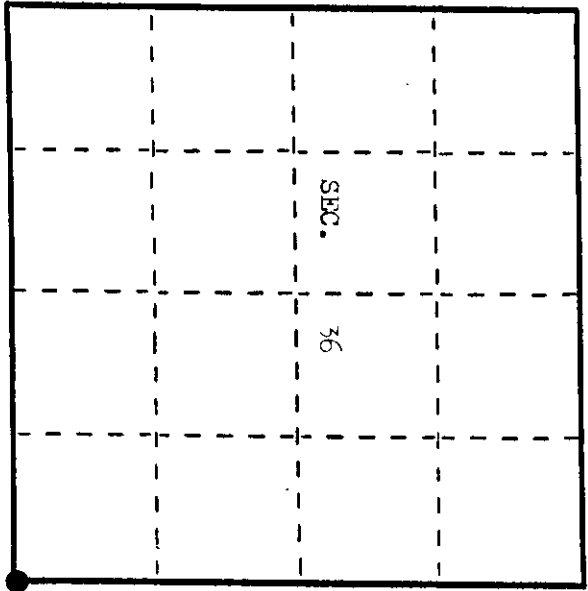
Original 3 T. 7" Y. Pine S 62° W 20 lks. 7" Y. Pine N 64° E 31 lks. 7 Aspen N 50° W 21 lks. 8" Y. Pine S 63° E 13 lks.

Description of corner evidence found:

Found a GLO iron pipe brass cap 12" below the surface of Halverson Road. Found a GLO iron pipe brass cap reference monument N 44°-58' E 32.97'. Found the following bearing trees in place: 24" N. Pine N 55° E 19.93' (Measurements are to a nail in the side of 26" N. Pine N 30° E 26.83' the trees.) Centerline of E-W town road is 3' south.

Description of monument and accessories I established to perpetuate the original location of this corner.

blazed the following new bearing tree: 24" N. Pine S 87° W 82.46' (Measurement is to a nail in the side of the tree.) Set a plastic sign post 0.5' northeast of the GLO reference monument. Set a 1"x12" iron pipe over the brass cap.



Corner monument restored.

Dated at Eagle River, Wis., this 2nd day of July, 19 87. Signature of James L. Will, Title: Registered Land Surveyor (County Surveyor, Registered Land Surveyor, or other duly authorized official) Registration No. S-1410 Office of Register of Deeds, County of Oneida. I hereby certify that the within instrument was filed in this office for record on the 29th day of June, 19 87 at 8:50 o'clock P.M. (Register of Deeds)

By: Deputy

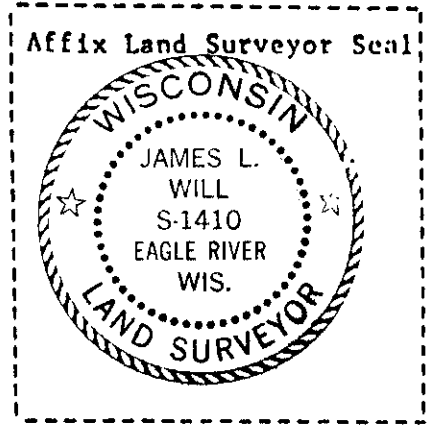
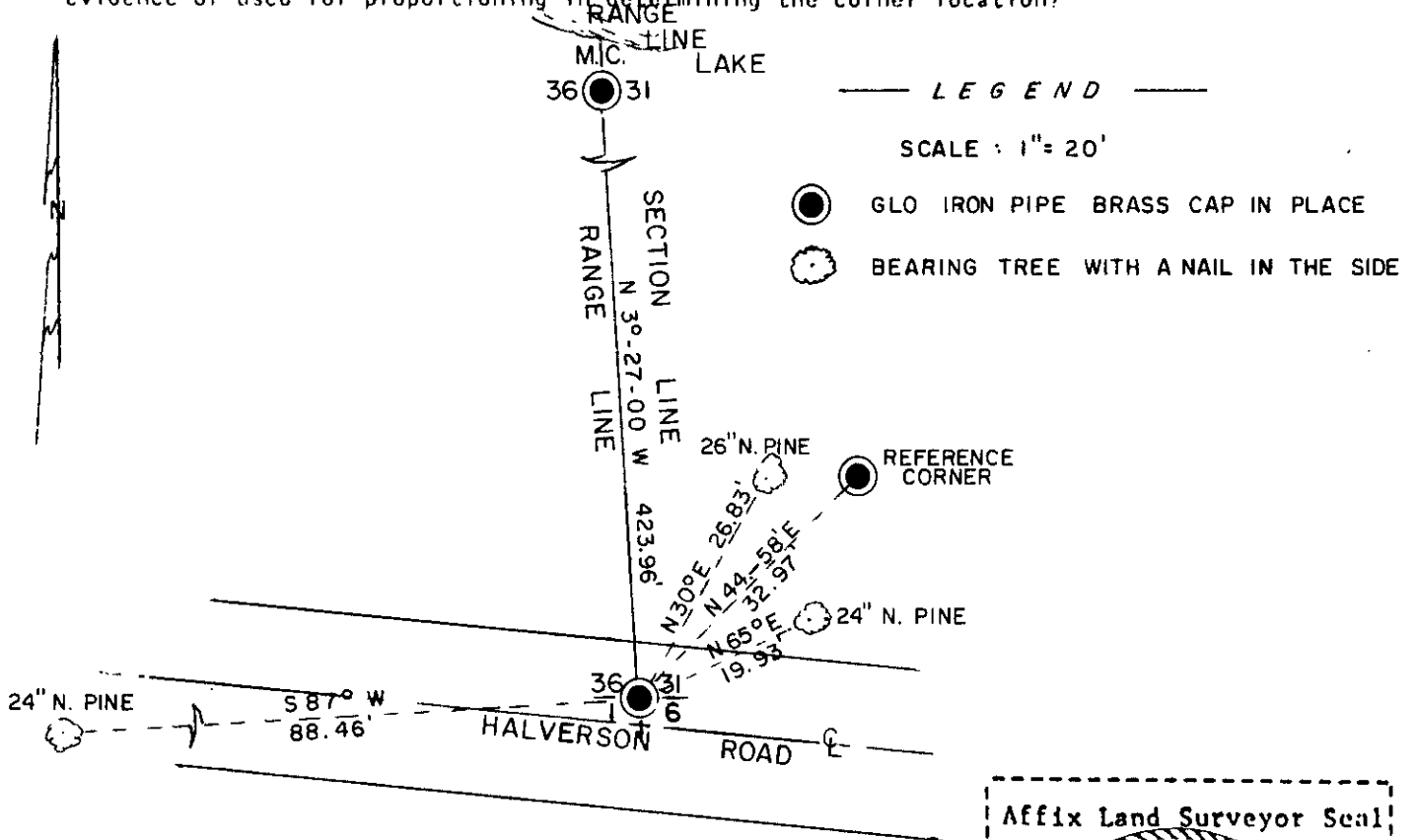
Describe any material discrepancy between the location of the corner as restored or reestablished and the location of that corner as previously restored or reestablished by distance and direction. Show the discrepancy on the plan view drawing under (d), above. Show the distances between the corner as previously restored or reestablished and (1) the corner as restored or reestablished, and (2) to at least 2 of the witness monuments shown on the drawing in (d), above.

See sketch below.

Was the corner restored through acceptance of (1) an obliterated evidence location, or, (2) a found perpetuated location?

Corner was restored through acceptance of a found perpetuated location.

Was the corner reestablished through lost corner proportionate methods? If so, show the method, including the directions and distances to other public land survey corners used as evidence or used for proportioning in determining the corner location?



James L. Will, R.L.S. #1410

I, James L. Will (type or print name) certify that the corner location shown on this record was determined by me or under my direction and control and that this U.S. Public Land Survey Monument Record is correct and complete to the best of my knowledge and belief.

James L. Will
Signature

July 3, 1987
Date

