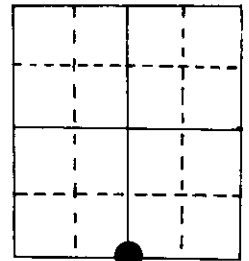
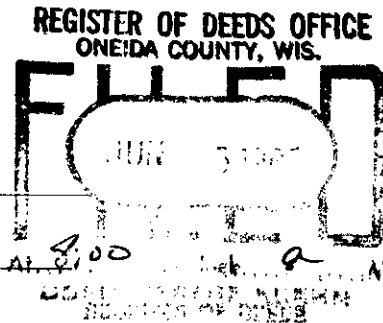


# U.S. PUBLIC LAND SURVEY MONUMENT RECORD

Note: This form is intended and designed to fulfill all requirements of Wisconsin Administrative Code, Chapter A-E 5.02, U.S. Public Land Survey Monument Record (3) (a) (b) (c) (d) (e) (f) (g) (h) (i). An additional sheet may be added if necessary to conform with said requirements.

(a) Corner location: Township 39 North  
 Range 10 East  
 Town/Village Three Lakes  
 County Oneida



Section 36

(b) (f) (g) (h) Description of monument found at this corner and if it was accepted, state all evidence (material, testimonial, occupational, plats, records, other monuments) used as a basis for accepting. If not accepted or if nothing was found, state evidence used as basis for establishing location. If reestablished through lost corner proportionate methods, indicate all monuments, distances and directions used to establish.

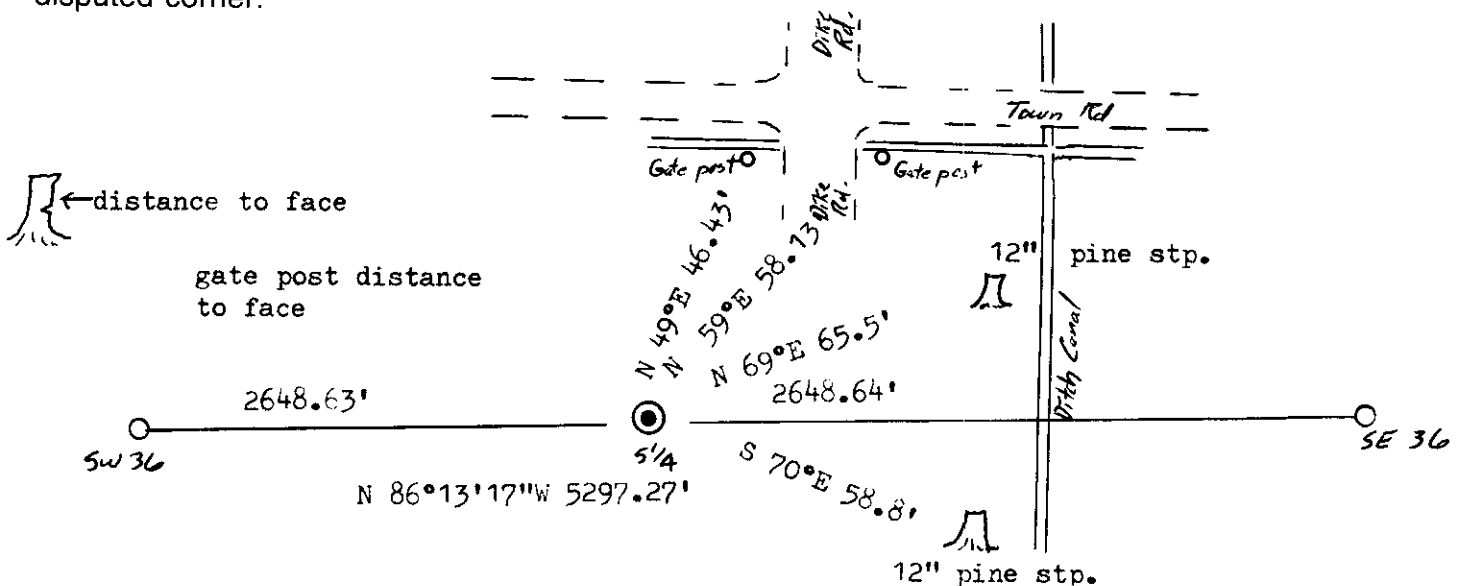
Original, 1859, Daugherty, OBT's Tam 6" N62°E 16 lks., Tam 8" S ½°E 69 lks.

Vaughn in 1901 set iron post here. No BT's.

1976, Seymour & Copp looked i.p. but no find. Ditches are there now. Set 2" w/ DNR brass cap at proportioned distance. Distance from power line (as shown on power line plan) matches good. Two BT's made.

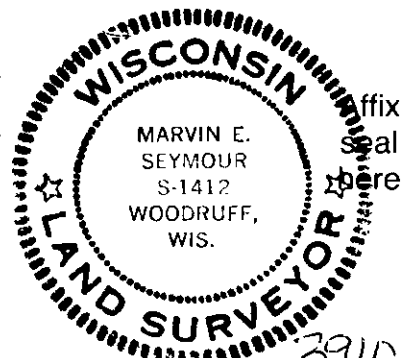
1987, Seymour found b.c. pushed over a little by equipment. Straightened up using BT's distance. BT's are now stps. Made more references and set a tan marker post one foot north of brass cap.

(c) (d) (e) Plan view of corner with ties to at least 4 witness monuments. If in disagreement with previously established corner, show the distances between the two corners and also indicate the ties to the disputed corner.



(i) I, Marvin E. Seymour  
 (type or print name) certify that the corner location on this record was determined by me or under my direction and control and that this U.S. Public Land Survey Monument Record is correct and complete to the best of my knowledge and belief.

Marvin E. Seymour May 18, 1987  
 Signature Date



2-23

3910360020