

State of Wisconsin

County of Oneida } ss.

I James L. Will, do hereby certify that on the 20th day of June, 1987, I found evidence of the Meander corner of between Section 36 & 31 Township 79 North, Range 10 & 11 East, Fourth Principal Meridian, as described hereon; and that from this evidence I established a new monument and accessories as described hereon to perpetuate the original location of this corner.

Resident witnesses:

Michael E. Weber

U. S. Public Land Survey Monument Record

Index No. Y-2-25

History of original corner establishment:

Original corner was established during the course of the exterior of T 79 N R 10 E, of which the east line was completed July 25, 1859 by Hiram C. Fellows, Deputy Surveyor.

Original B.T.'s:

12" Y. Pine S 37° E 6 lks.
14" Y. Pine N 23° W 5 lks.

Description of corner evidence found:

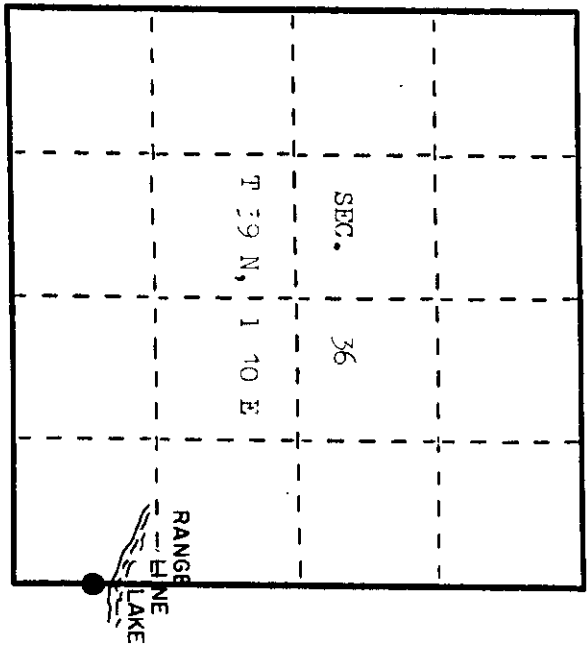
Found a GLO iron pipe brass cap in place 6' south of the lake.

Description of monument and accessories I established to perpetuate the original location of this corner.

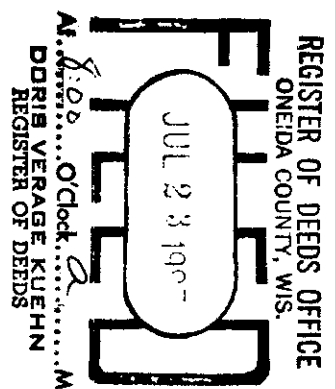
Made the following new bearing trees:

20" N. Pine S 78° E 43.42' (Measurements are to a nail in the side of the trees.)
21" W. Pine S 18° E 28.88'
9" W. Pine S 33° W 25.71'
7" W. Pine S 76° W 38.93'

Set a plastic sign post 0.5' northeast of the corner.



● - Corner monument restored.



3910360400

Dated at Exeter, Wis., this 2nd day of July, 1987.
Signature James L. Will Title Registered Land Surveyor Registration No. S-1411C
(County Surveyor, Registered Land Surveyor, or other duly authorized official)
Office of Register of Deeds, County of Oneida, I hereby certify that the within instrument was filed in this office for record on the 23rd day of July, 1987 at 10 o'clock A. M.

(Register of Deeds)

By Michael E. Weber Deputy

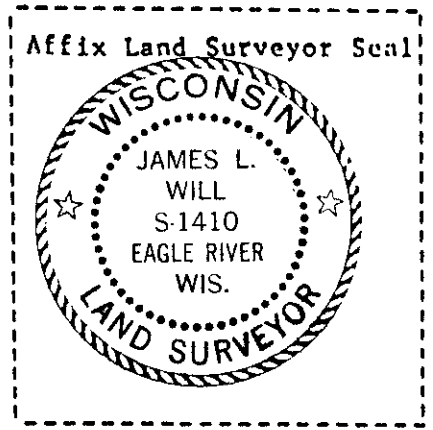
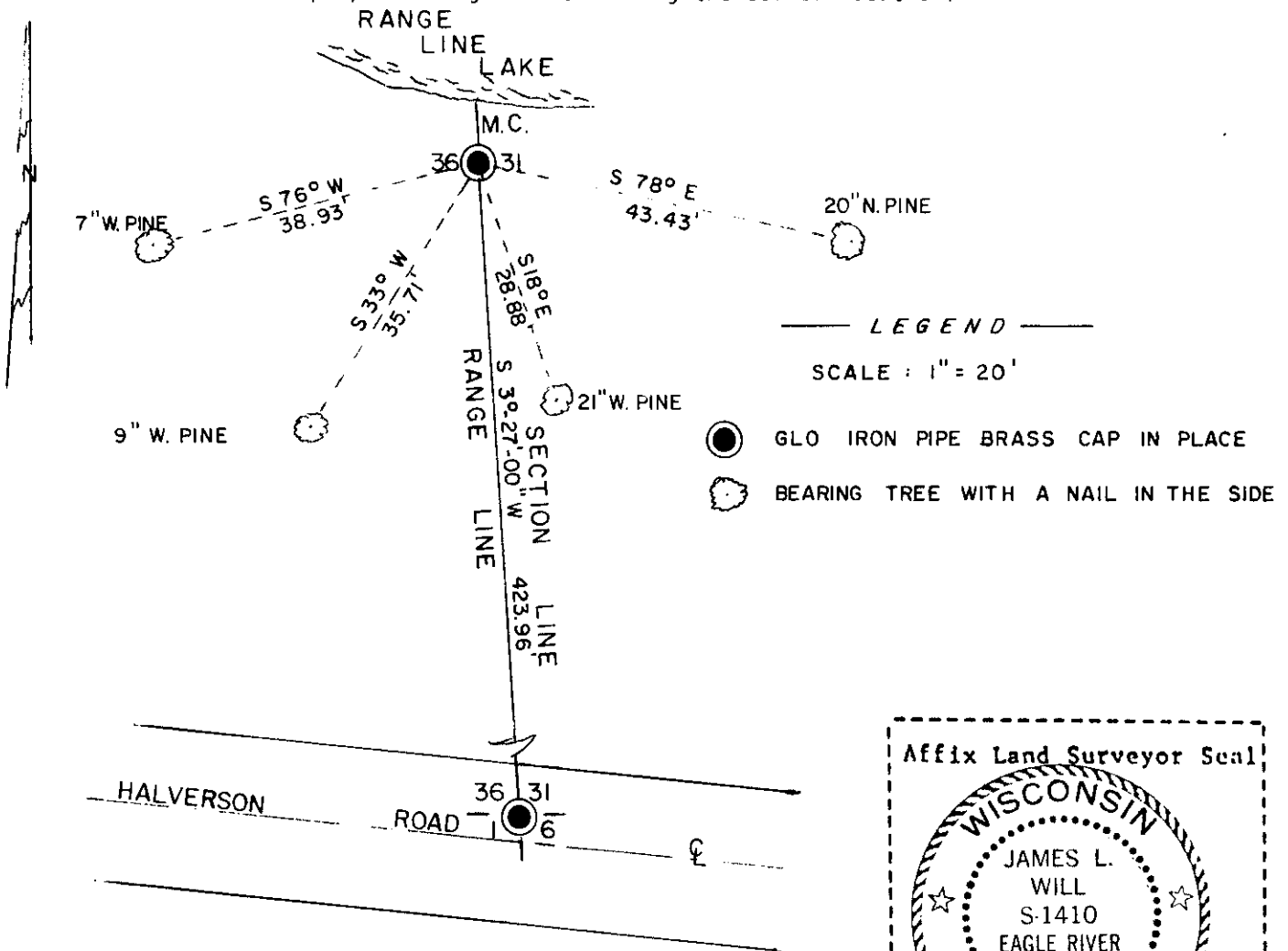
Describe any material discrepancy between the location of the corner as restored or reestablished and the location of that corner as previously restored or reestablished by distance and direction. Show the discrepancy on the plan view drawing under (d), above. Show the distances between the corner as previously restored or reestablished and (1) the corner as restored or reestablished, and (2) to at least 2 of the witness monuments shown on the drawing in (d), above.

None. See sketch below.

Was the corner restored through acceptance of (1) an obliterated evidence location, or, (2) a found perpetuated location?

Corner was restored through acceptance of a found perpetuated location.

Was the corner reestablished through lost corner proportionate methods? If so, show the method, including the directions and distances to other public land survey corners used as evidence or used for proportioning in determining the corner location?



I, James L. Will, R.L.S. # 1410
 (type or print name) certify that the corner location shown on this record was determined by me or under my direction and control and that this U.S. Public Land Survey Monument Record is correct and complete to the best of my knowledge and belief.

James L. Will Signature July 2, 1987 Date