

U.S. PUBLIC LAND SURVEY MONUMENT RECORD

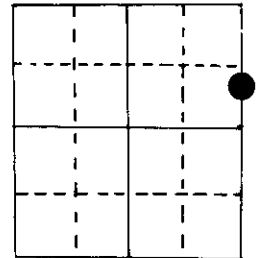
Note: This form is intended and designed to fulfill all requirements of Wisconsin Administrative Code, Chapter A-E 5.02, U.S. Public Land Survey Monument Record (3) (a) (b) (c) (d) (e) (f) (g) (h) (i). An additional sheet may be added if necessary to conform with said requirements.

(a) Corner location: Township 39 North

Range 10 East/West

Town/City/Village Three Lakes

County Oneida



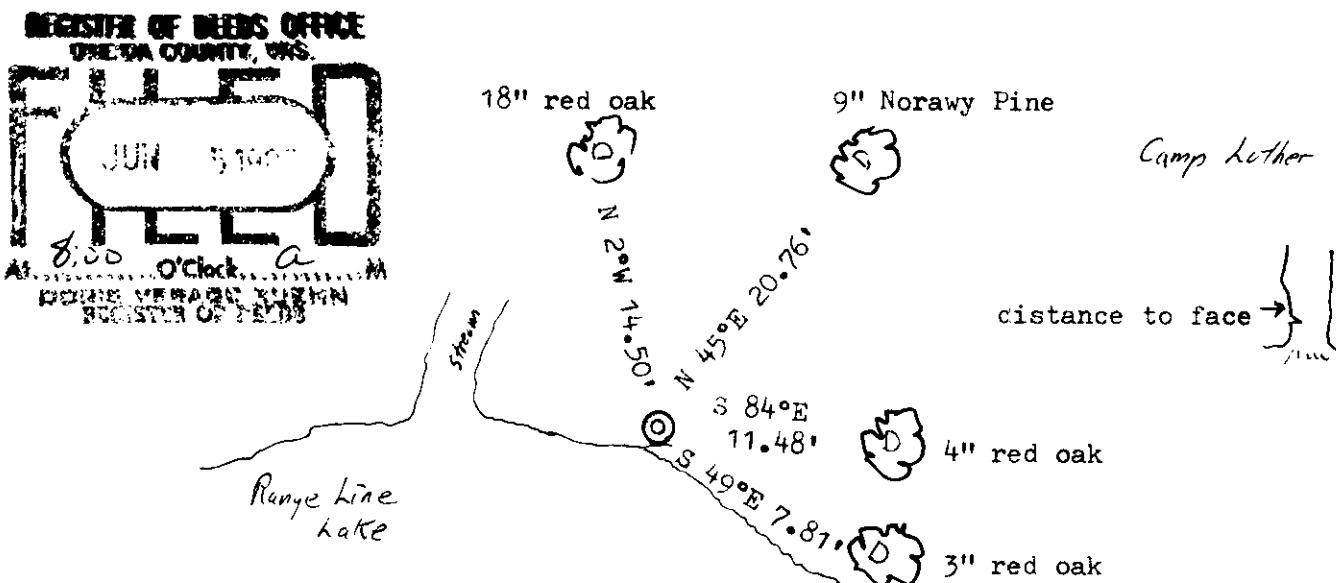
Section 36

(b) (f) (g) (h) Description of monument found at this corner and if it was accepted, state all evidence (material, testimonial, occupational, plats, records, other monuments) used as a basis for accepting. If not accepted or if nothing was found, state evidence used as basis for establishing location. If reestablished through lost corner proportionate methods, indicate all monuments, distances and directions used to establish.

Seymour, 1987, found 1927 GLO brass cap on shore of Range Line L.
 Brass cap on short ^{post} was tipped over into lake. A square marker post with tag is next to it. I replaced GLO brass cap on a four foot long 2" i.p. and placed it back in same location. No B T's found so made new BT's.

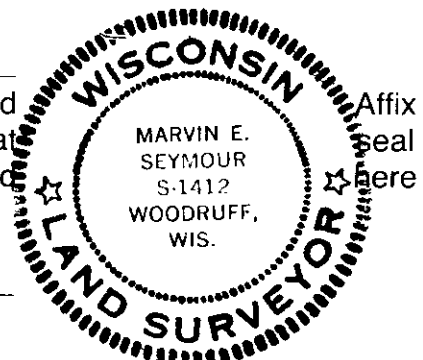
Original was by W.E. Daugherty, 1859, probably out in lake, 55.21 ch north of SE 36.
 OBT's PY 18" S69°E 30 lks., PY 14" N23°W 18 lks.

(c) (d) (e) Plan view of corner with ties to at least 4 witness monuments. If in disagreement with previously established corner, show the distances between the two corners and also indicate the ties to the disputed corner.



(i) I, Marvin E. Seymour
 (type or print name) certify that the corner location on this record was determined by me or under my direction and control and that this U.S. Public Land Survey Monument Record is correct and complete to the best of my knowledge and belief.

Marvin E. Seymour May 18, 1987
 Signature Date



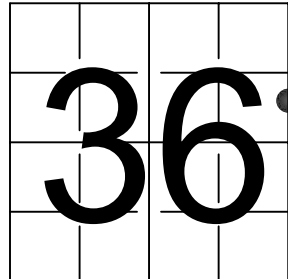
3910362800

U. S. PUBLIC LAND SURVEY MONUMENT RECORD

NOTE: This form is intended and designed to fulfill all requirements of Wisconsin Administrative Code, Chapter A-E 7.08 U.S. Public Land Survey Monument Record (3) (a-i)

A-E 7.08(3)(a) Identity of corner:
MEANDER CORNER EAST LINE
SECTION 36, TOWNSHIP 39 NORTH,
RANGE 10 EAST OF THE 4TH PM,
TOWN OF THREE LAKES,
COUNTY OF ONEIDA

WISCORS - ONEIDA COUNTY
N: 232,559.437 USft (XXX,XXX.XXX)
E: 324,074.853 USft (XXX,XXX.XXX)
Datum: NAD83 (2011)
GNSS Method RTK
GNSS Control WISCORS VRS



The coordinate value shown has been verified by the average of two or more GPS observations at a markedly different time. Coordinates shown in parenthesis are previously published values.

A-E 7.08(3)(b)

Original Surveyor: Hiram C. Fellows - June - July 1859

NOTE: Previous monument record indicates original surveyor as William E. Daugherty.

Original Accessories:

Yellow Pine	18	S 69° E	30 Links
Yellow Pine	14	N 23° W	18 Links

See previous U.S. Public Land Survey Monument Record - W-X-25 - May 18, 1987 - Surveyor 1412 - Marvin E. Seymouel - THENCE:

November 16, 1998 - Surveyor 1731 - Kip W. Soder - indicates this position as "GLO brass cap monument found" on Oneida County Map #B4083.

October 17, 2002 - Surveyor 1731 - Kip W. Soder - indicates this position as "GLO brass cap monument found" on Oneida County Map #A1194.

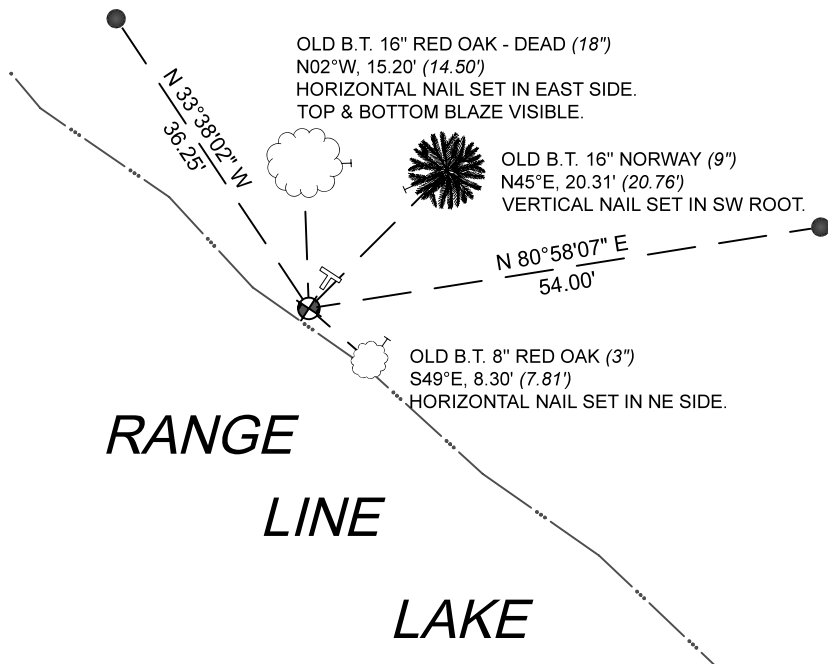
April 1, 2004 - Surveyor 1616 - Stephen J. Favorite - indicates this position as "2" G.L.O. brass capped iron pipe found" on Oneida County Map #A1369.

June 21, 2006 - Surveyor 1731 - Kip W. Soder - indicates this position as "GLO brass cap monument found" on Oneida County Map #A1798.

November 13, 2023 - I found a 2.5" diameter iron pipe with a 3.25" diameter brass cap stamped to identify the corner location. The monument is ±1 foot from the shoreline, extends ±12" above grade, is firm, and is leaning towards the lake (I measured the top center of the monument). I also found 2 of Seymour's bearing trees alive and in good condition, one dead and standing. I established 2 new witnesses as shown below.

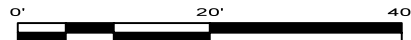
A-E 7.08(3)(c)(d) Plan view of corner with references to at least 4 witness monuments.

BEARINGS LISTED TO THE NEAREST
SECOND ARE REFERENCED TO WISCONSIN
COUNTY COORDINATE REFERENCE
SYSTEM - ONEIDA COUNTY ZONE.
ALL OTHER BEARINGS ARE MAGNETIC.



LEGEND

- This Corner
- 0.75" diameter X 18" long iron rod, set
- Vinyl T-post, set ±2 feet NE of corner

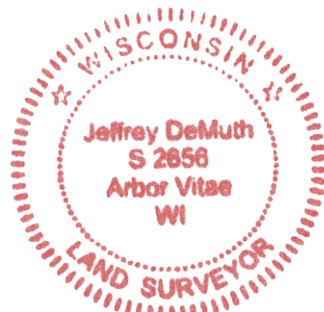


A-E 7.08(3)(e) 1987 Surveyor set a 2" iron pipe with a stamped brass cap. Subsequent surveyors found the same, as did I in 2023.

A-E 7.08(3)(f) I accept this monument as a FOUND PERPETUATED LOCATION of the corner.

A-E 7.08(3)(g)(h) This corner was not determined through lost-corner-proportionate methods.

A-E 7.08(3)(i) I, Jeffrey L. DeMuth, Professional Land Surveyor No. S-2656, hereby certify that the corner location on this record was determined by me or under my direction and control, and that this U.S. Public Land Survey Monument Record is correct and complete to the best of my knowledge, and belief.



SIGNATURE

November 28, 2023

DATE

43910362800