

This document has been accepted with advisory review of Robert Wisat, County Surveyor, Davis Verage Kuehn, Register of Deeds

FORM NO. 985-A



Stock No. 26273

REGISTER'S OFFICE)

Oneida County, Wis.

Received for Record the 3rd day of

March A. D. 1982 at

3:30 o'clock P. M. and recorded in

Range 11 of Rata...
Davis Verage Kuehn

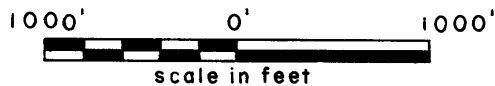
Register

Sheet 1 of 4

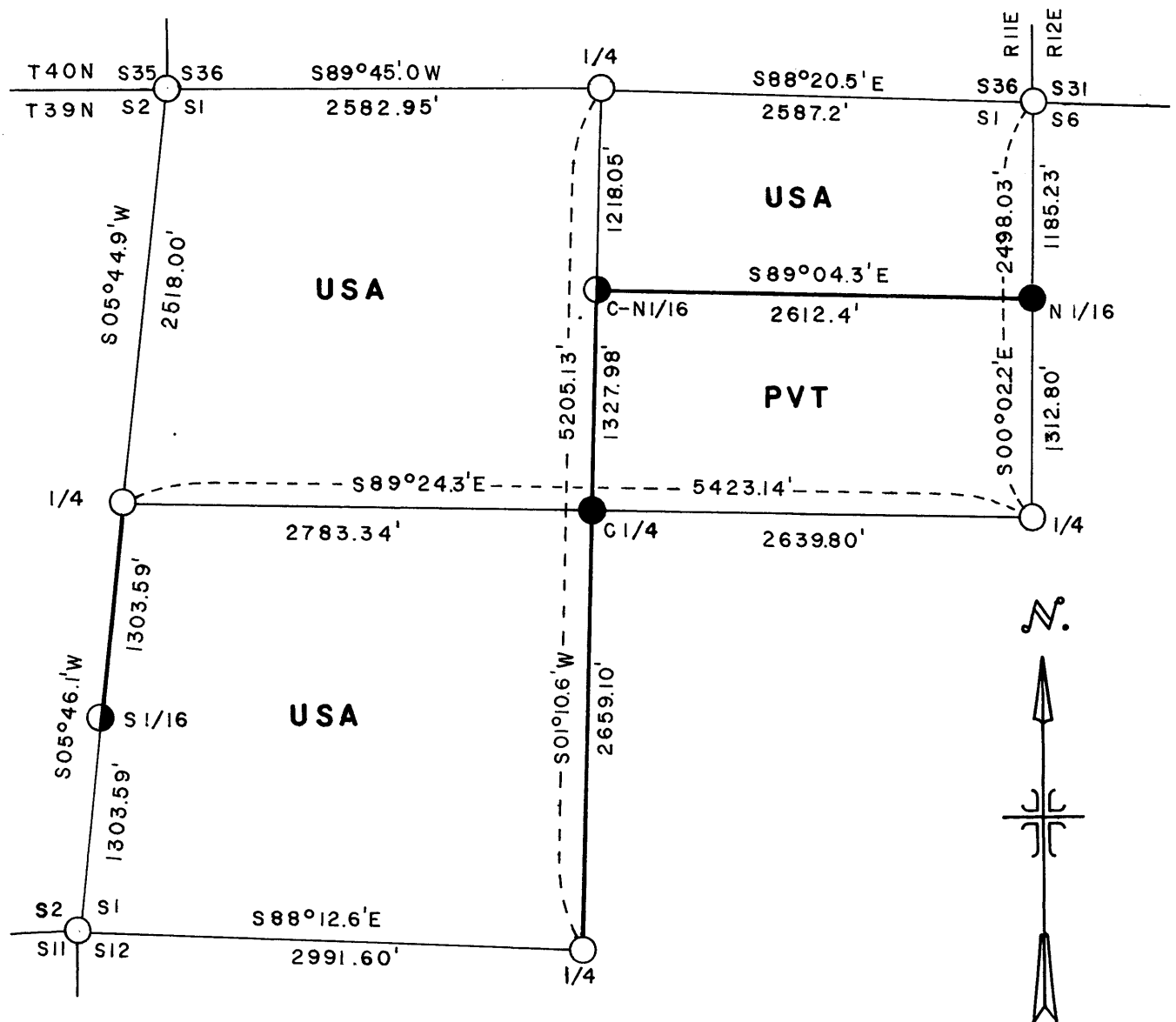
PLAT OF SURVEY FOR CERTIFIED LAND
CORNER RESTORATION AND ESTABLISHMENT

BEING THE CORNERS FOR THE NORTH 1/2 NE 1/4, SW 1/4, AND
NW 1/4 OF SECTION 1, T39N, R11E,
FOURTH PRINCIPAL MERIDIAN

COUNTY OF ONEIDA, STATE OF WISCONSIN



Scale: 1" = 1000'



LEGEND

- - 2 1/2 inch diameter aluminum pipe monument, 30 inches long with an aluminum cap stamped to identify the corner.
- - G.L.O. Dependent Resurvey monuments.
- ◐ - 2 1/2 inch diameter aluminum pipe monument, 5 feet long with an aluminum cap stamped to identify the corner.

Note: Bearings are referenced to solar observations.

— Boundary line marked to standard

CONVERSION FACTORS:

Meters to feet - 3.280833
Feet to Meters - 0.304801

3911013000 3911012000
3911012020 4011360020 3911022000 3911021000
3911013020 4011360000 3911020000 3911010020 4011350000

A-21

Stock No. 26273

Sheet 2 of 4

SURVEY NOTES

This survey was made by the U.S. Department of Agriculture, Forest Service to establish and mark controlling subdivision corners of Government land.

The original Government subdivision survey of this township was made in 1859. A dependent resurvey was made by the U.S. Department of the Interior General Land Office in 1939 and 1941. The corners of the dependent resurvey on the perimeter of Section 1 were recovered as control for the subdivision survey of Section 1.

The U.S. Government acquired title to lands in Section 1, being the N $\frac{1}{2}$ NE, NW $\frac{1}{4}$, SW $\frac{1}{4}$ in September 1940.

CORNERS RECOVERED AND RESTORED1. Section Corner common to Sections 1, 6, 31, 36, Townships 39 & 40 N, Ranges 11 & 12 E.

Corner position is marked by a monument from the 1939 Dependent Resurvey by H.B. Crawford of T39N, R12E.

Corner References Recovered:

Norway Pine 13"	N81°E	38.84 feet
Norway Pine 17"	S70°E	43.06 feet
Norway Pine 13"	S10°W	73.59 feet
Steel sign post	North	.50 feet

2. Quarter Corner between Sections 1-6, Ranges 11 & 12 E.

Corner position is marked by a monument from the 1939 Dependent Resurvey of T39N, R12E.

Corner References Recovered:

Red Oak 14"	N60°E	16.72 feet
Steel Sign Post	South	.50 feet

New Corner Reference:

House Corner	S21°E	51.37 feet
--------------	-------	------------

3. Quarter Corner between Sections 1 and 12.

Corner position is marked by a monument from the 1941 Dependent Resurvey of T39N, R11E.

Corner References Recovered:

White Pine 21"	N43°E	16.09 feet
Red Pine Stump	S 5°E	13 links

New Corner References:

Red Pine 19"	N82°W	40.82 feet
4"x4" wood sign post	Northwest	.50 feet

4. Section Corner common to Sections 1, 2, 11 and 12.

Corner position is marked by a monument set in the 1926 Extension Survey.

Corner References Recovered:

Norway Pine 21"	N82°E	29.60 feet
White Birch 9"	S30°W	36.94 feet
Pine Stump	N47°W	252 links

Stock No. 26273

Sheet 3 of 4

New Corner References:

Red Pine 20"	N05°E	45.65 feet
Maple 7"	S21°E	38.62 feet
4"x4" Wood Sign Post	Southwest	.50 feet

5. Quarter Corner between Sections 1 and 2.

Corner position is marked by a monument from the 1941 Dependent Resurvey of T39N, R11E.

Corner References Recovered:

Norway Pine 21"	N55°E	21.31 feet
Pine Stump	N74°W	25.5 links

New Corner References:

Norway Pine 21"	N16°W	24.05 feet
Steel Sign Post	Northeast	.50 feet

6. Section Corner common to Sections 1, 2, 35, 36, Townships 39 & 40 N.

Corner position is marked by a monument from the 1939 Dependent Resurvey of T40N, R11E.

Corner References Recovered:

Norway Pine 20"	N52°E	2.80 feet
White Pine Stump	S75°W	46 links
Norway Pine Stump	N69°W	43 links
Popple 21"	S27°E	1.55 feet

New Corner References:

Norway Pine 20"	N32°W	43.92 feet
Spruce 12"	S67°W	21.18 feet

7. Quarter Corner between Sections 1 & 36, Townships 39 & 40 N.

Corner position is marked by a monument from the 1939 Dependent Resurvey of T40N, R11E.

Corner References Recovered:

White Pine Snag	N41°E	10.56 feet
Oak 13"	S13°W	36.94 feet
(1939 resurvey called this B.T. a maple)		
Oak 16"	N65°W	17.40 feet
(1939 resurvey called this B.T. a maple)		
Steel Sign Post	East	.50 feet

CORNERS ESTABLISHED1. South Sixteenth between Sections 1 and 2.

Position established at mid-point and on line between West Quarter Corner and Southwest Section Corner of Section 1.

Corner References:

White Pine 6"	N70°E	10.66 feet
White Pine 8"	S79°W	30.71 feet
Steel Sign Post	South	.50 feet

Stock No. 26273

Sheet 4 of 4

2. Center Quarter Corner of Section 1.

Position established on the intersection of the straight lines between opposing Dependent Resurvey Quarter Corners on the perimeter of Section 1.

Corner References:

Red Pine 7"	N69°E	10.13 feet
White Pine 10"	S27°30'E	13.76 feet
White Pine 8"	N74°75'W	30.11 feet
Steel Sign Post	West	.50 foot

3. Center North Sixteenth Corner, Section 1.

Position established by proportionate measurement and on line between the North Quarter Corner and the Center Quarter Corner.

Corner References:

White Pine 17"	S75°E	66 feet
Steel Sign Post	North	.50 foot

4. North Sixteenth Corner between Sections 1-6, Ranges 11 & 12 E.

Position established by proportionate measurement and on line between the Northeast Section Corner and the East Quarter Corner of Section 1.

Corner References:

Red Pine 12"	N67°E	39.23 feet
White Pine 13"	S39°W	24.93 feet
Red Pine 11"	S44°E	35.45 feet
Steel Sign Post	North	.50 foot

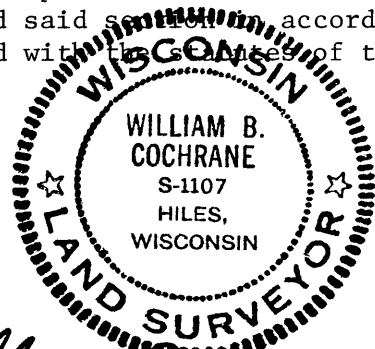
The field survey notes and a copy of this plat of survey are on file in the Forest Supervisor's Office at Rhinelander, Wisconsin. A copy of this plat of survey is on file in the District Ranger's Office at Eagle River, Wisconsin.

SURVEYOR'S AFFIDAVIT

State of Wisconsin)
County of Oneida) ss

I, William B. Cochrane, Cadastral Surveyor, U.S. Forest Service, and a registered land surveyor in the State of Wisconsin, hereby certify that I have surveyed and subdivided Section 1, Township 39 North, Range 11 East, Fourth Principal Meridian, State of Wisconsin.

The plat map and survey notes herewith are a correct representation of the land surveyed and divided. I have surveyed and subdivided said section in accordance with the rules for the survey of the public lands and with the laws of the State of Wisconsin.



William B. Cochrane
Land Surveyor, U.S. Forest Service

R.L.S. State of Wisconsin
Certificate S-1107

Date of Survey: 1981

U.S. PUBLIC LAND SURVEY MONUMENT RECORD

This form is intended and designed to fulfill all requirements of Wisconsin Administrative Code, Chapter A-E 7.08 U.S. Public Land Survey Monument Record (3) (a)(b)(c)(d)(e)(f)(g)(h)(i).

Oneida County
Land Information Office
Filed
8/20/2025

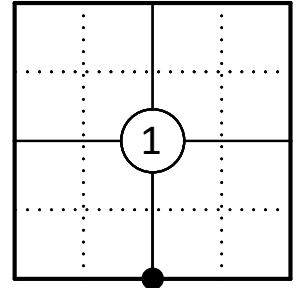
A-E 7.08(3)(a) Identity of the corner:

S 1/4 Corner Section 1
Township 39 North
Range 11 East
Town of Three Lakes
County of Oneida

Original Corner Information:

Original Surveyor: William E. Daugherty Original B.T.'s: Yellow Pine 8" - N5°E, 13 links
Birch 6" - N40°W, 6 links
Date of Survey: September 1859

Corner ID: 3911010020

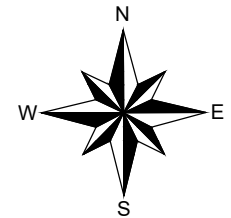


A-E 7.08(3)(b)(e)(f)(g) Describe any record evidence, monument evidence, occupational evidence, testimonial evidence or any other material evidence considered. Describe any discrepancy between the corner restored and any previously established location. State whether the corners was restored through acceptance of obliterated evidence, a found perpetuated location, or determined by proportionate methods.

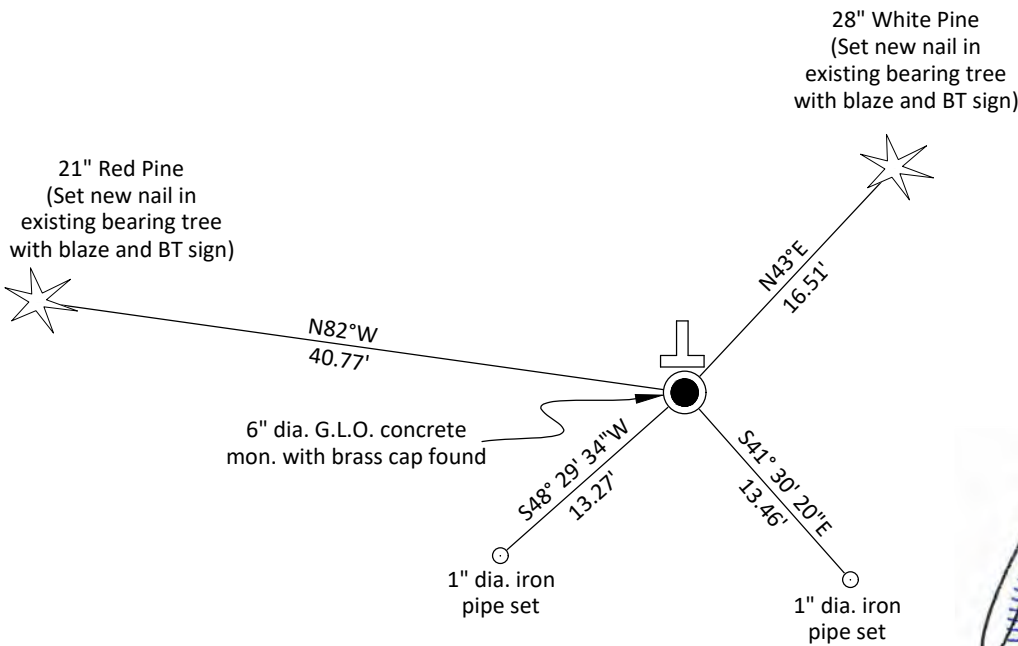
- 1941 Dependent Resurvey by Hugh Crawford indicates he set a 6" dia. concrete monument with brass cap from original pine bearing tree and made two new bearing trees: 15" White Pine, N43°, 23.5 links and 12" White Pine, S38-3/4°, 60.5 links.
- 1981 Plat of Survey for Certified Land Corner Restoration and Establishment by William Cochrane indicates corner position is marked by a monument from the 1941 Dependent Resurvey of T39N, R11E . He notes the following bearing trees: 21" White Pine, N43°E, 16.09 feet; Red Pine Stump 13 links and made a new bearing tree N82°W, 40.82 feet (See corner form for additional information)
- 07/15/2025 I found and accepted a 6" dia G.L.O. concrete monument with brass cap stamped to identify the corner along with two existing bearing trees. I set new nails in the two existing bearing trees and set two iron pipes as reference monuments to witness the corner as shown below.

A-E 7.08(3)(c)(d)(e)(h) Plan view of corner with ties to at least four witnesses. If in disagreement with previously established corner, show the distances between the two corners and also indicate the tie to the disputed corner. Distances and directions to other PLSS used as evidence or for proportioning.

Bearings given to the nearest second are Oneida County Grid all other bearings are magnetic



- * Vinyl "T" post 1.0' north of corner.
- * Distances to bearing trees are to nail in side
- * Sketch is not to scale



A-E 7.08(3)(i) - Certification

I, Gregory S. Maines, Professional Land Surveyor No. 2729, hereby certify that the corner location on this record was referenced by me or under my direction and control and that this U.S. Public Land Survey Monument Record is complete to the best of my knowledge and belief.
REF: 2025176

Index No.: