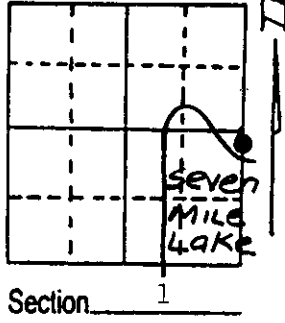


U.S. PUBLIC LAND SURVEY MONUMENT RECORD

Note: This form is intended and designed to fulfill all requirements of Wisconsin Administrative Code, Chapter A-E 5.02, U.S. Public Land Survey Monument Record (3) (a) (b) (c) (d) (e) (f) (g) (h) (i). An additional sheet may be added if necessary to conform with said requirements.

(a) Corner location: Township 39 North
 Range 11 East/West
 Town/City/Village Three Lakes
 County Oneida



(b) (f) (g) (h) Description of monument found at this corner and if it was accepted, state all evidence (material, testimonial, occupational, plats, records, other monuments) used as a basis for accepting. If not accepted or if nothing was found, state evidence used as basis for establishing location. If reestablished through lost corner proportionate methods, indicate all monuments, distances and directions used to establish.

1858-Original Surveyor was Alfred Millard who set the Meander post and the following Bearing trees: 10" W. Birch N 55° W, 60 lks.; 14" W. Pine S 75° E, 60 lks.

1939-Dependent Resurvey by the G.L.O. set a Brass capped concrete monument.

1962-Wincesten recovered the GLO monument near the north shore of the lake.

1966- Robert Bandow recovered the GLO monument near the shoreline.

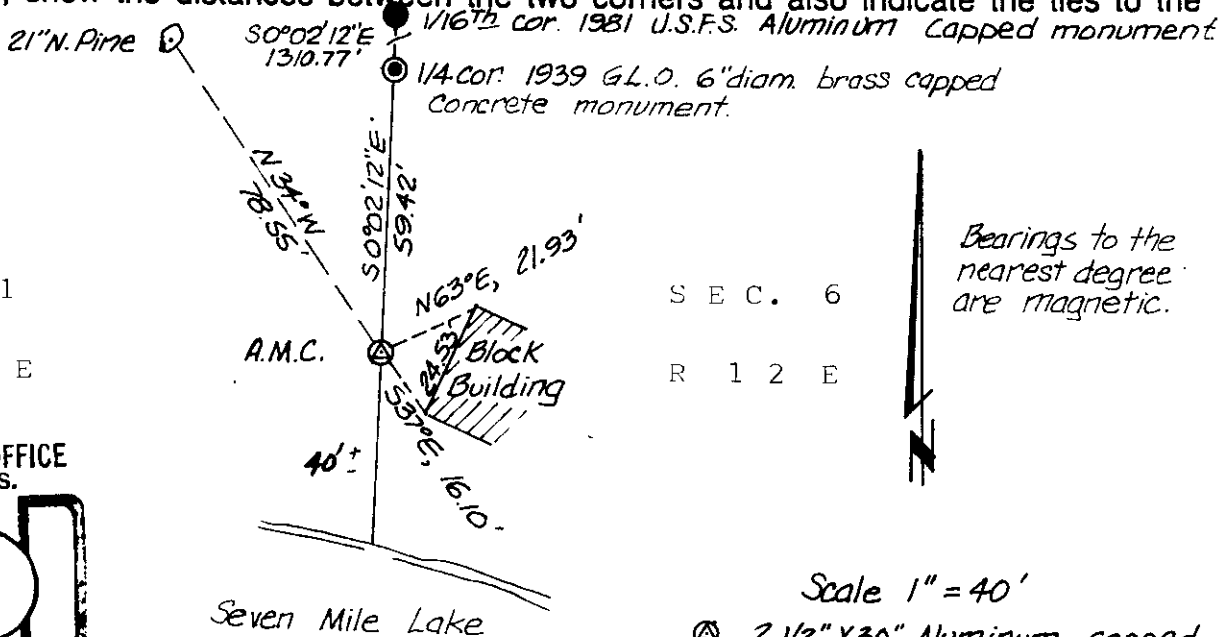
1980- Robert Bandow recovered the GLO monument near the shoreline.

February 23, 1987, I search'd for the monument and did not find it.

There has been considerable erosion on the high bank near the shoreline. The monument is believed to be lost. I set a 2 1/2" X 30" Aluminum capped magnetic County monument as an Auxillary Meander Corner at the top of the Bank flush with the ground.

I blazed one new bearing tree and set a nail in the rootcrown and used and existing block building and the 1/4 corner for the 4 references. (See diagram below for locations and identifications.)

(c) (d) (e) Plan view of corner with ties to at least 4 witness monuments. If in disagreement with previously established corner, show the distances between the two corners and also indicate the ties to the disputed corner.

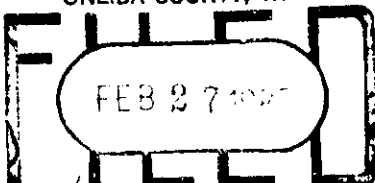


S E C . 1
R 1 1 E

S E C . 6
R 1 2 E

Bearings to the nearest degree are magnetic.

REGISTER OF DEEDS OFFICE
ONEIDA COUNTY, WIS.



At 8:00 O'Clock a M
DORIS VERAGE KUEHN
REGISTER OF DEEDS

Seven Mile Lake

T 3 9 N

Scale 1" = 40'

⊙ 2 1/2" X 30" Aluminum capped magnetic County monument set.

(i) I, Stephen J. Favorite, RLS #S-1616,
 (type or print name) certify that the corner location on this record was determined by me or under my direction and control and that this U.S. Public Land Survey Monument Record is correct and complete to the best of my knowledge and belief.

Stephen J. Favorite
 Signature

February 24, 1987
 Date



Index No. C-25

3911011900

