

This document has been accepted with advisory review of Robert Winst, County Surveyor, Davis Verage Kuehn, Register of Deeds

FORM NO. 985-A



Stock No. 26273

REGISTER'S OFFICE)

Oneida County, Wis

Received for Record the 3rd day of

March A. D. 1982 at

3:30 o'clock P. M. and recorded in

Range 11 of Rata...
Davis Verage Kuehn

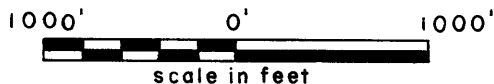
Register

Sheet 1 of 4

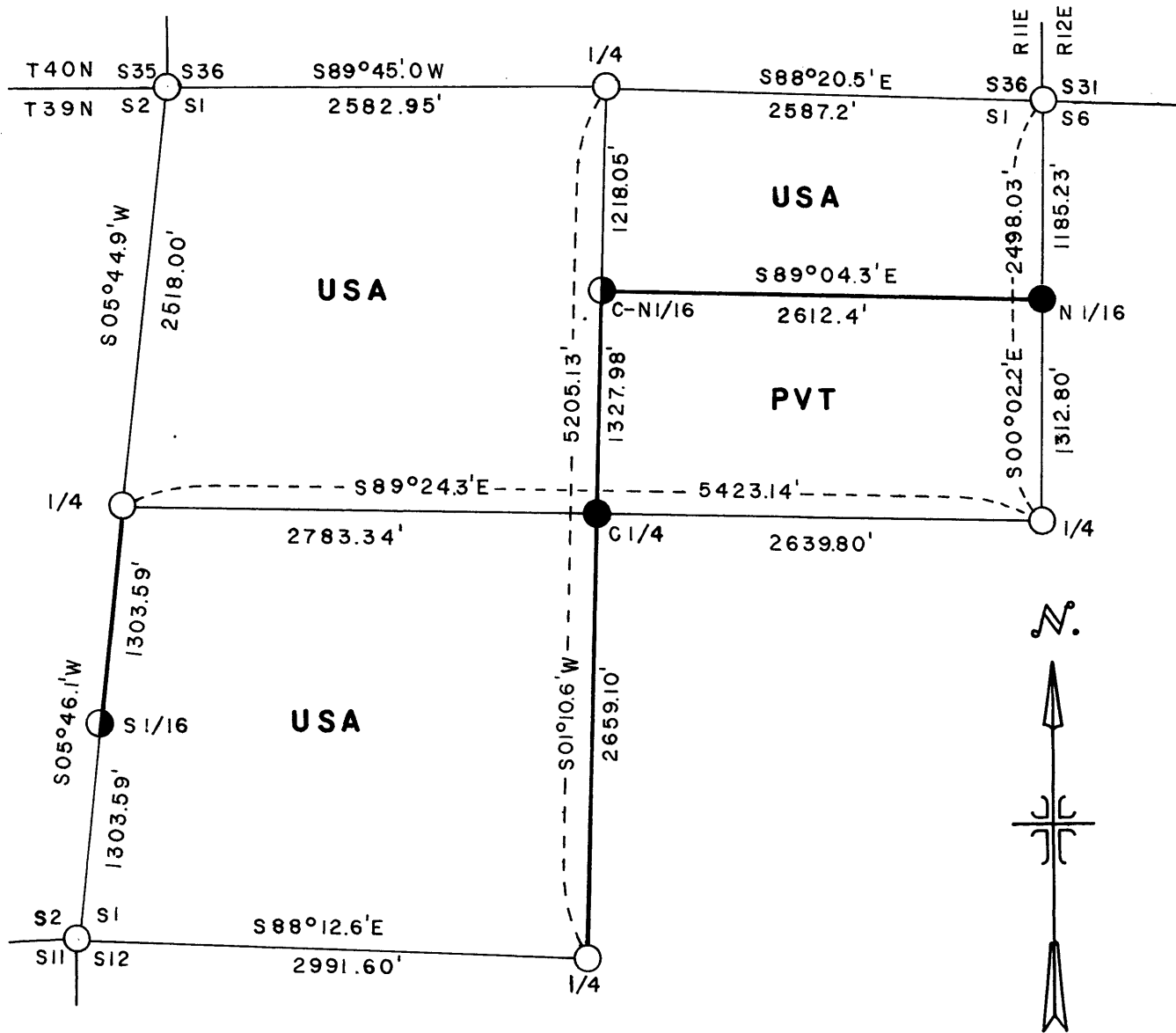
PLAT OF SURVEY FOR CERTIFIED LAND
CORNER RESTORATION AND ESTABLISHMENT

BEING THE CORNERS FOR THE NORTH 1/2 NE 1/4, SW 1/4, AND
NW 1/4 OF SECTION 1, T39N, R11E,
FOURTH PRINCIPAL MERIDIAN

COUNTY OF ONEIDA, STATE OF WISCONSIN



Scale: 1" = 1000'



LEGEND

- - 2 1/2 inch diameter aluminum pipe monument, 30 inches long with an aluminum cap stamped to identify the corner.
- - G.L.O. Dependent Resurvey monuments.
- ◐ - 2 1/2 inch diameter aluminum pipe monument, 5 feet long with an aluminum cap stamped to identify the corner.

Note: Bearings are referenced to solar observations.

— Boundary line marked to standard

CONVERSION FACTORS:

Meters to feet - 3.280833
Feet to Meters - 0.304801

3911013000 3911012000 3911022000 3911021000
3911012020 4011360020 3911020000 3911010020
3911013020 4011360000 3911020000 4011350000

A-21

Stock No. 26273

Sheet 2 of 4

SURVEY NOTES

This survey was made by the U.S. Department of Agriculture, Forest Service to establish and mark controlling subdivision corners of Government land.

The original Government subdivision survey of this township was made in 1859. A dependent resurvey was made by the U.S. Department of the Interior General Land Office in 1939 and 1941. The corners of the dependent resurvey on the perimeter of Section 1 were recovered as control for the subdivision survey of Section 1.

The U.S. Government acquired title to lands in Section 1, being the N $\frac{1}{2}$ NE, NW $\frac{1}{4}$, SW $\frac{1}{4}$ in September 1940.

CORNERS RECOVERED AND RESTORED1. Section Corner common to Sections 1, 6, 31, 36, Townships 39 & 40 N, Ranges 11 & 12 E.

Corner position is marked by a monument from the 1939 Dependent Resurvey by H.B. Crawford of T39N, R12E.

Corner References Recovered:

Norway Pine 13"	N81°E	38.84 feet
Norway Pine 17"	S70°E	43.06 feet
Norway Pine 13"	S10°W	73.59 feet
Steel sign post	North	.50 feet

2. Quarter Corner between Sections 1-6, Ranges 11 & 12 E.

Corner position is marked by a monument from the 1939 Dependent Resurvey of T39N, R12E.

Corner References Recovered:

Red Oak 14"	N60°E	16.72 feet
Steel Sign Post	South	.50 feet

New Corner Reference:

House Corner	S21°E	51.37 feet
--------------	-------	------------

3. Quarter Corner between Sections 1 and 12.

Corner position is marked by a monument from the 1941 Dependent Resurvey of T39N, R11E.

Corner References Recovered:

White Pine 21"	N43°E	16.09 feet
Red Pine Stump	S 5°E	13 links

New Corner References:

Red Pine 19"	N82°W	40.82 feet
4"x4" wood sign post	Northwest	.50 feet

4. Section Corner common to Sections 1, 2, 11 and 12.

Corner position is marked by a monument set in the 1926 Extension Survey.

Corner References Recovered:

Norway Pine 21"	N82°E	29.60 feet
White Birch 9"	S30°W	36.94 feet
Pine Stump	N47°W	252 links

Stock No. 26273

Sheet 3 of 4

New Corner References:

Red Pine 20"	N05°E	45.65 feet
Maple 7"	S21°E	38.62 feet
4"x4" Wood Sign Post	Southwest	.50 feet

5. Quarter Corner between Sections 1 and 2.

Corner position is marked by a monument from the 1941 Dependent Resurvey of T39N, R11E.

Corner References Recovered:

Norway Pine 21"	N55°E	21.31 feet
Pine Stump	N74°W	25.5 links

New Corner References:

Norway Pine 21"	N16°W	24.05 feet
Steel Sign Post	Northeast	.50 feet

6. Section Corner common to Sections 1, 2, 35, 36, Townships 39 & 40 N.

Corner position is marked by a monument from the 1939 Dependent Resurvey of T40N, R11E.

Corner References Recovered:

Norway Pine 20"	N52°E	2.80 feet
White Pine Stump	S75°W	46 links
Norway Pine Stump	N69°W	43 links
Popple 21"	S27°E	1.55 feet

New Corner References:

Norway Pine 20"	N32°W	43.92 feet
Spruce 12"	S67°W	21.18 feet

7. Quarter Corner between Sections 1 & 36, Townships 39 & 40 N.

Corner position is marked by a monument from the 1939 Dependent Resurvey of T40N, R11E.

Corner References Recovered:

White Pine Snag	N41°E	10.56 feet
Oak 13"	S13°W	36.94 feet
(1939 resurvey called this B.T. a maple)		
Oak 16"	N65°W	17.40 feet
(1939 resurvey called this B.T. a maple)		
Steel Sign Post	East	.50 feet

CORNERS ESTABLISHED1. South Sixteenth between Sections 1 and 2.

Position established at mid-point and on line between West Quarter Corner and Southwest Section Corner of Section 1.

Corner References:

White Pine 6"	N70°E	10.66 feet
White Pine 8"	S79°W	30.71 feet
Steel Sign Post	South	.50 feet

Stock No. 26273

Sheet 4 of 4

2. Center Quarter Corner of Section 1.

Position established on the intersection of the straight lines between opposing Dependent Resurvey Quarter Corners on the perimeter of Section 1.

Corner References:

Red Pine 7"	N69°E	10.13 feet
White Pine 10"	S27°30'E	13.76 feet
White Pine 8"	N74°75'W	30.11 feet
Steel Sign Post	West	.50 foot

3. Center North Sixteenth Corner, Section 1.

Position established by proportionate measurement and on line between the North Quarter Corner and the Center Quarter Corner.

Corner References:

White Pine 17"	S75°E	66 feet
Steel Sign Post	North	.50 foot

4. North Sixteenth Corner between Sections 1-6, Ranges 11 & 12 E.

Position established by proportionate measurement and on line between the Northeast Section Corner and the East Quarter Corner of Section 1.

Corner References:

Red Pine 12"	N67°E	39.23 feet
White Pine 13"	S39°W	24.93 feet
Red Pine 11"	S44°E	35.45 feet
Steel Sign Post	North	.50 foot

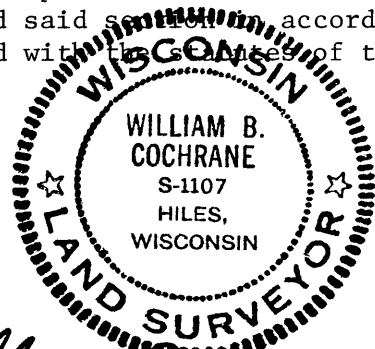
The field survey notes and a copy of this plat of survey are on file in the Forest Supervisor's Office at Rhinelander, Wisconsin. A copy of this plat of survey is on file in the District Ranger's Office at Eagle River, Wisconsin.

SURVEYOR'S AFFIDAVIT

State of Wisconsin)
County of Oneida) ss

I, William B. Cochrane, Cadastral Surveyor, U.S. Forest Service, and a registered land surveyor in the State of Wisconsin, hereby certify that I have surveyed and subdivided Section 1, Township 39 North, Range 11 East, Fourth Principal Meridian, State of Wisconsin.

The plat map and survey notes herewith are a correct representation of the land surveyed and divided. I have surveyed and subdivided said section in accordance with the rules for the survey of the public lands and with the laws of the State of Wisconsin.



William B. Cochrane
Land Surveyor, U.S. Forest Service

R.L.S. State of Wisconsin
Certificate S-1107

Date of Survey: 1981



Stock No. 26273

U.S. PUBLIC LAND SURVEY MONUMENT RECORD

Index No. C-25

State of Wisconsin } ss.
County of Oneida

I Milo E. Stefan, do hereby
certify that on the 1st day
of November, 1988, I found
evidence of the East Quarter
corner of Section 1
Township 39, North, Range
11 East, Fourth Principal Meridian,
as described hereon; and that from this evidence
I established a new monument and accessories
as described hereon to perpetuate the original
location of this corner.

Resident witnesses:

Jeffrey L. Kennedy

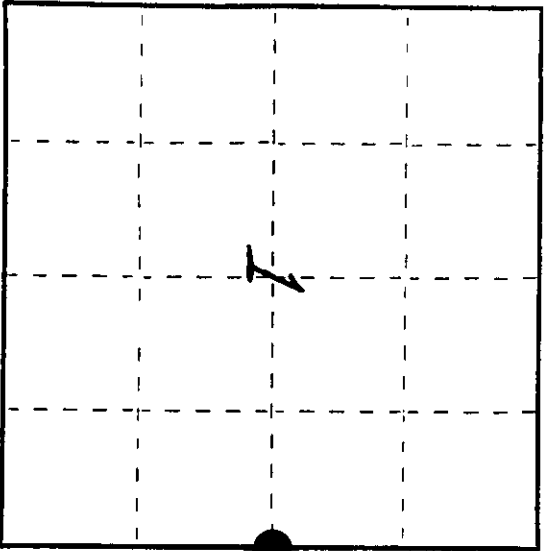
History of original corner establishment: By Alfred Millard in 1858.
1939 - G.L.O. found both originan BT stumps and set a 6" x 24" concrete monument,
with two BTs:
5" White Pine, S50 1/4°W, 31 links (20.46')
8" Black Oak, N60°E, 25 links (16.50')

Description of corner evidence found:

G.L.O. monument and both 1939 BTs alive and in good condition. Steel Sign Post
South, .5'

Description of monument and accessories I established to perpetuate the original location of this corner.

We placed BT tags and made two new references:
Northwest corner of house, S21°E, 51.37'
Power Pole, North, 27.77'



○ = Corner monument restored.

Dated at Rhinelander, Wis., this 15th day of November, 1988
Signature: *Milo E. Stefan* Title: Land Surveyor Registration No. S-1558
(County Surveyor, Registered Land Surveyor, or other duly authorized official)
Office of Register of Deeds, County of Oneida, I hereby certify that the within
instrument was filed in this office for record on the 15th day of November, 1988
at 10:00 o'clock A.M.

(Register of Deeds)

By: _____ Deputy

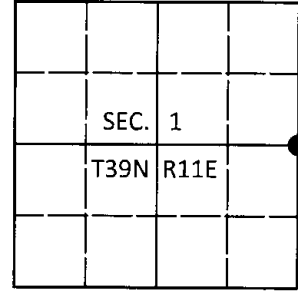
3911012000

U.S. PUBLIC LAND SURVEY MONUMENT RECORD

Note: This form is intended and designed to fulfill all requirements of Wisconsin Administrative Code, Chapter A-E 7.08 U.S. Public Land Survey Monument Record (3)(a-i).

(a) CORNER LOCATION
1/4 Cor. of Secs. 1 & 6
Township 39 North
Range 11 & 12 East of the 4th P.M.
Town of Three Lakes
County of Oneida

WISCORS - Oneida County
N: 256,535.62 USft
E: 356,531.76 USft
Datum: NAD 83(2011)
GNSS Method: RTN (Offset)
GNSS Control: WISCORS VRS



(b) HISTORY OF ORIGINAL CORNER ESTABLISHMENT

Original Surveyor: Original Accessories:
Date of Survey Commenced:
Completed:

(b)(f)(g)(h) Description of monument found at this corner and if it was accepted, state all evidence (material, testimonial, occupational, plats, records, other monuments) used as a basis for accepting. If not accepted or if nothing was found, state evidence used as basis for establishing location. If re-established through lost corner proportionate methods, indicate all monuments, distances and directions used to establish. Indicate type of monument and sign post found or set.

This is a perpetuation of a previous USPLS Monument Record by Milo E. Stefan, RLS dated November 4, 1988 and filed in the office of the Oneida County Register of Deeds. A complete history of the corner can be found on the previous monument record. I accept the previous location as a true and faithful perpetuation or reestablishment of the original corner location and further perpetuate it as follows.

September 27, 2016: I found and accepted the record monument, a 6" diam. concrete monument with a GLO brass tablet projecting 3" above the ground surface. The existing accessories were found in substantial agreement with the record and were not remeasured as the sole purpose of this work is to report the coordinates of the corner point.

The coordinate value shown has been verified by at least one of the following methods: 1) comparison to a previously GPS determined published value; 2) the value is the average of two or more GPS observations at a markedly different time; 3) one or more distances were measured back to the GPS observed corner from temporary GPS observed offset locations.

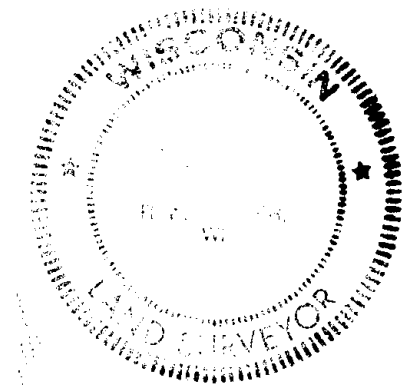
(c)(d)(e) Plan view of corner with ties to at least 4 witness monuments. If in disagreement with previously established corner, show the distances between the two corners and also indicate the ties to the disputed.

REGISTER OF DEEDS OFFICE
ONEIDA COUNTY
FILED

DEC 28 2016

AT O'CLOCK M
KYLE J. FRANSON
REGISTER OF DEEDS

(i) I, Michael J. Romportl, Professional Land Surveyor No. S-1624, hereby certify that the corner location on this record was determined by me or under my direction and control and that this U.S. Public Land Survey Monument Record is correct and complete to the best of my knowledge and belief.



Michael J Romportl 12/23/16
Signature Date

U.S. PUBLIC LAND SURVEY MONUMENT RECORD

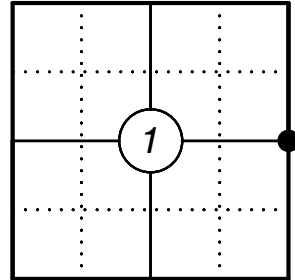
This form is intended and designed to fulfill all requirements of Wisconsin Administrative Code, Chapter A-E 7.08 U.S. Public Land Survey Monument Record (3) (a)(b)(c)(d)(e)(f)(g)(h)(i). An additional sheet may be added if necessary to confirm with said requirements.

Oneida County
Land Information Office
Filed
3/26/2025

(a) Corner Location:

E 1/4 Corner Section 1
Township 39 North
Range 11 East
Town of Three Lakes
County of Oneida

Corner ID: 3911012000



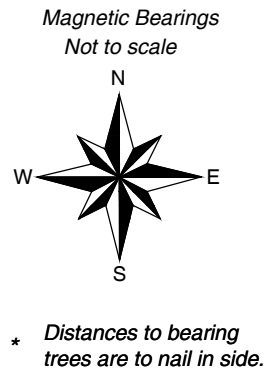
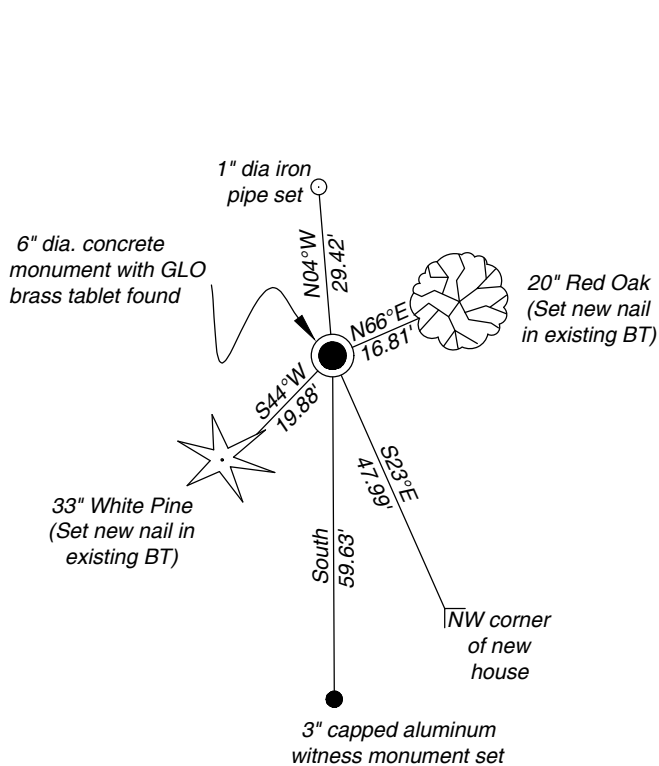
(b) History of Original Corner:

For corner history, see previous U.S. Public Land Survey Monument Record by Milo E. Stefan, dated November 4, 1988 and by Michael J. Romportl, dated December 12, 2016.

(f)(g)(h) Description of monument found at this corner and if it was accepted, state all evidence (material, testimonial, occupational, plats, records, other monuments) used as a basis for establishing location. If reestablishing through lost corner proportionate methods, indicate all monuments, distances, and directions used to establish. Indicate type of monument and sign post found or set.

01/11/2024 - I found and accepted a 6" dia concrete monument with a GLO brass tablet at the corner location as well as two existing bearing trees, I set one additional iron pipe and an aluminum monument to witness the corner as shown below.

(c)(d)(e) Plan view of corner with ties to at least four witnesses. If in disagreement with previously established corner, show the distances between the two corners and also indicate the tie to the disputed corner.



Certification

I, Gregory S. Maines, Professional Land Surveyor No. 2729, hereby certify that the corner location on this record was referenced by me or under my direction and control and that this U.S. Public Land Survey Monument Record is complete to the best of my knowledge and belief. REF: 2024016