

Stock No. 26273

U.S. PUBLIC LAND SURVEY MONUMENT RECORD

Index No. E-19

State of Wisconsin

County of Oneida } ss.

History of original corner establishment:
Original Government Survey in 1859 by William E. Daugherty.

I Kip W. Soder, do hereby certify that on the 1st day of August 19 89, I found evidence of the North one-quarter corner of Section 11 Township 39 North, Range 11 East, Fourth Principal Meridian, as described hereon; and that from this evidence I established a new monument and accessories as described hereon to perpetuate the original location of this corner.

A dependent resurvey of the township was executed by the General Land Office in 1941. By remains of original corner set a concrete monument 24" long 6" dia., with a brass cap marked; 1/4, S2, S11, 1941. Blazed and scribed the following B.T.'s:

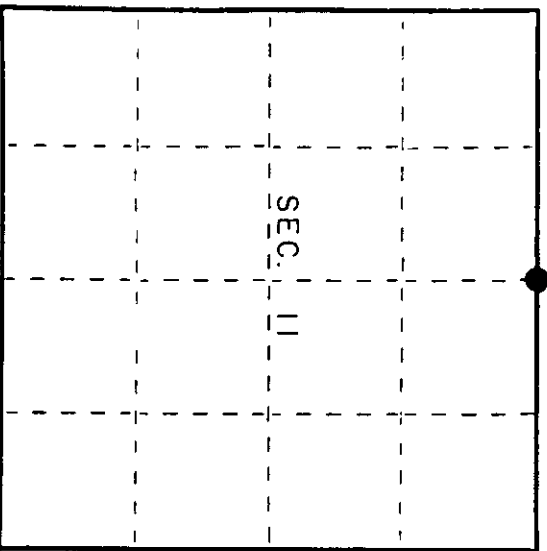
Resident witnesses:
Robert Conquest

W. Pine	14"	S65°E	44 lks.	Local Post	6" sq.	West	4 lks.
W. Pine	6"	N21 1/2°W	81 lks.				
Description of corner evidence found:							
Found monument as described and in place, from which the following bear;							
Maple	5"	S62°E	50.74 feet				
W. Pine	14"	S37°W	29.05 feet				
W. Pine	Stp.	B.T. Signs					

Description of monument and accessories I established to perpetuate the original location of this corner.
Blazed and scribed the following bearing trees;

Oak	8"	S87°W	42.75 feet
W. Pine	20"	East	49.03 feet

Set Steel Sign Post Northeast 0.80 feet



● = Corner monument restored.

Dated at Three Lakes, Wis., this 25 day of August 19 89

Signature: *Kip W. Soder* Title: Land SURVEYOR Registration No. S-1731
(County Surveyor, Registered Land Surveyor, or other duly authorized official)

Office of Register of Deeds, County of _____, I hereby certify that the within instrument was filed in this office for record on the _____ day of _____ 19____ at _____ o'clock _____ M.

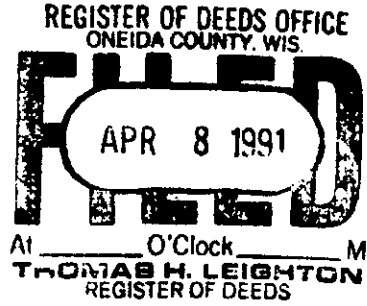
(Register of Deeds)

By _____ Deputy

02002002

e) Describe any material discrepancy between the location of the corner as restored or reestablished and the location of that corner as previously restored or reestablished by distance and direction. Show the discrepancy on the plan view drawing under (d), above. Show the distances between the corner as previously restored or reestablished and (1) the corner as restored or reestablished, and (2) to at least 2 of the witness monuments shown on the drawing in (d), above.

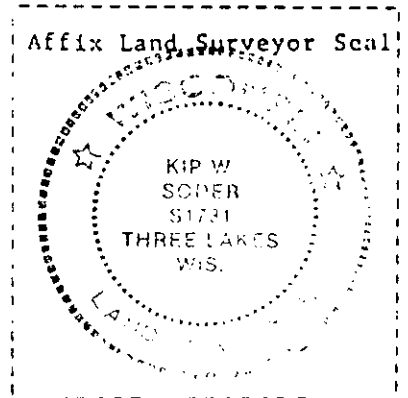
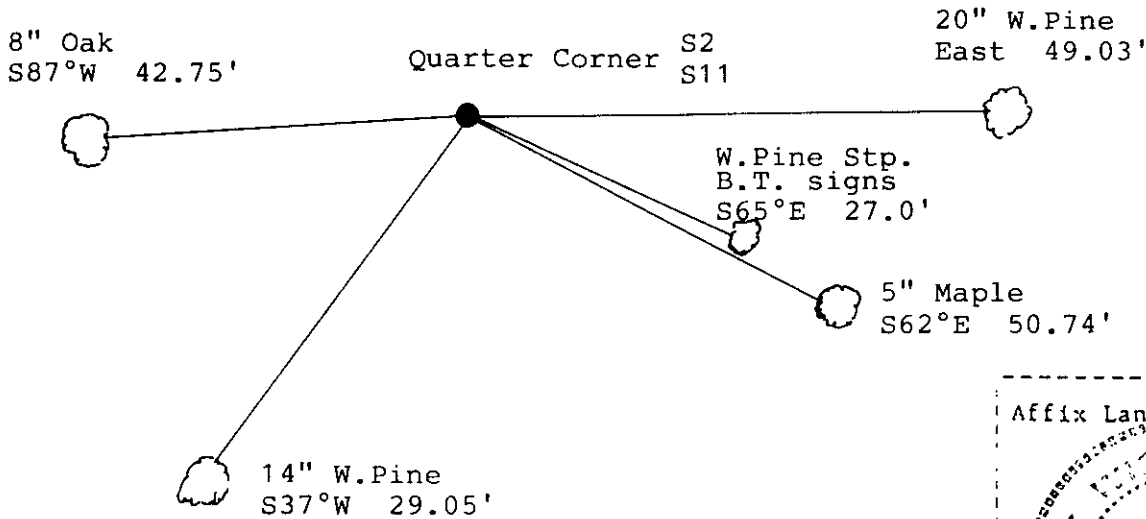
See Drawing below.



(f) Was the corner restored through acceptance of (1) an obliterated evidence location, or, (2) a found perpetuated location?

Restored through acceptance of a found perpetuated location.

(g&h) Was the corner reestablished through lost corner proportionate methods? If so, show the method, including the directions and distances to other public land survey corners used as evidence or used for proportioning in determining the corner location?



Kip W. Soder

(i) I, Kip W. Soder (type or print name) certify that the corner location shown on this record was determined by me or under my direction and control and that this U.S. Public Land Survey Monument Record is correct and complete to the best of my knowledge and belief

Kip W. Soder Signature Sept 8 1989 Date

Survey requested by: Sam Hord District Ranger 1/8/90 Date