

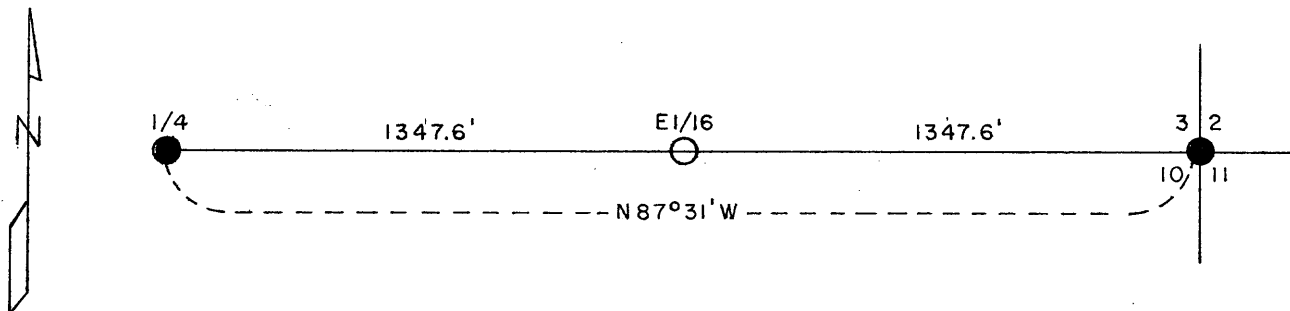
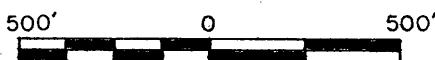
This document has been accepted with advisory review of Robert Winat, County Surveyor. Doris Verage Kuehn, Register of Deeds

REGISTER'S OFFICE }
 Oneida County, Wis. }
 Received for Record the 3rd day of March A. D. 19 82 at 3:40 o'clock P.M. and recorded in Range 11 of Restoration corners
Doris Verage Kuehn

Register
 Sheet 1 of 2

CERTIFIED LAND CORNER RESTORATION AND ESTABLISHMENT
 BEING THE SOUTHEAST CORNER AND THE SOUTH QUARTER CORNER
 OF SECTION 3 AND THE EAST SIXTEENTH CORNER
 BETWEEN SECTIONS 3 AND 10
 TOWNSHIP 39 NORTH, RANGE 11 EAST, FOURTH PRINCIPAL MERIDIAN
 ONEIDA COUNTY, WISCONSIN

SCALE



LEGEND

- 1941 GLO Dependent Resurvey Monument
- Corner position marked by a 2 1/2 inch diameter aluminum pipe 30 inches long with an aluminum cap stamped to identify the corner.

SURVEY NOTES

This survey was made by the U.S. Department of Agriculture, Forest Service for the purpose of restoring, establishing, marking and perpetuating those corners on the west half of the section line common to Sections 2 and 10, Township 39 North, Range 11 East, Fourth Principal Meridian, Oneida County, State of Wisconsin as shown on the plat map herewith.

The original Government subdivision survey of this township was made in 1859. A dependent resurvey of the township was made in 1941 by the U.S. Department of Interior, General Land Office. The corners of the dependent resurvey were used for control in this survey.

The corner positions are monumented by the monument described in the map legend.

The corner position established by this survey was located to an accuracy of one part in 3000. The bearings are from the 1941 resurvey.

The field notes of this survey and a copy of this plat of survey are on file in the Forest Supervisor's Office at Rhinelander, Wisconsin.

E-17
 E-15
 E-16

3911030020
 3911030010
 3911030000

CORNER ESTABLISHED1. East Sixteenth Corner between Sections 3 and 10, T39N, R11E.

Position established at midpoint and on line between the south quarter corner and the southeast section corner of Section 3.

Corner references:

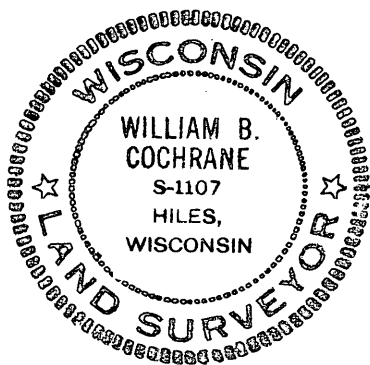
W. Birch 11"	N27°E	8.55 feet
W. Birch 9"	S59°E	21.76 feet
Steel Sign Post	North	0.50 feet

SURVEYOR'S AFFIDAVIT

State of Wisconsin)
County of Oneida) ss

I, William B. Cochrane, Land Surveyor, U.S. Forest Service, and a Registered Land Surveyor in the State of Wisconsin, hereby certify that I have retraced and surveyed the east half of the section line between Sections 3 and 10, Township 39 North, Range 11 East, Fourth Principal Meridian, State of Wisconsin as shown on the plat map herewith.

The plat map and notes are a correct representation of the corners recovered, and established. I have recovered and established these corners in accordance with the rules for the survey of the public lands and with the statutes of the State of Wisconsin.



William B. Cochrane

Land Surveyor, U.S. Forest Service
R.L.S. State of Wisconsin
Certificate S-1107

Date of Survey: 1980

CERTIFIED LAND CORNER RESTORATION

State of Wisconsin }
County of Oneida } ss.

I Jean F. Resvick, do hereby certify that on the 4th day of Nov., 1981, I found evidence of the Northwest Section corner of section 11 Township 39 North, Range 11 East, Fourth Principal Meridian, as described hereon; and that from this evidence I established a new monument and accessories as described hereon to perpetuate the original location of this corner:

Description of original monument and accessories and subsequent restorations:

Surveyed in 1859 by William W. Daugherty
Dependent Resurvey in 1941
Set Concrete Monument, 24" long, 6" in Diameter, 18" in the ground with Brass cap marked T39N, R11E, S3, S2, S10, S11, 1941
Birch 14, (Original) N 16 E, 17 Lks.
Maple 7, N 40 E, 50 lks.
White Pine 10, S 58 1/2 E, 44 Lks.
White Pine 20, S 12 W, 11 Lks.
White Pine 11, N 57 W, 72 Lks.

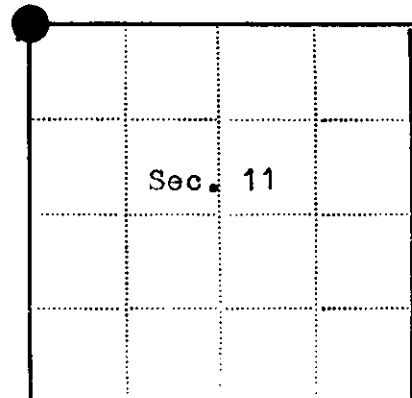
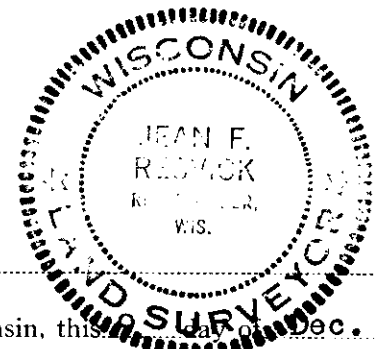
U.S. Forest Service 1963
Found: Monument in place
Yellow Birch Stump N16E, 11.2 Ft.
Maple 13, N40E, 33.0 Ft.
W. Pine 14, S58 1/2 E, 29.0 Ft.
W. Pine 17, N57W, 47.5 Ft.

Description of corner evidence found:

- Found:
1. Monument in Place
2. W. Pine 17, N 57 W, 47.5 ft. (dead)
3. Hemlock 18, S 83 1/2 E, (blowed down)
4. Red Pine 9, S 52 W, 37.6 Ft.
5. 4 x 4 wood post 1.4 feet, Northwest of Monument.

U.S. Forest Service 1968
Cut Maple 13, N40E, 33.0 Ft.
W.pine 14, S58 1/2 E, 29.0 Ft.
Blazed and Scribed new bearing trees
Hemlock 18, S 83 1/2 E, 57.68 Ft.
Red pine 5, S 52 E, 37.58 Ft.

Description of monument and accessories I established to perpetuate the location of this corner:
No new accessories were added at this time.



Corner monument restored
-

Resident witnesses
Dated at Rhinelander Wisconsin, this 12th day of Dec. 1981
Signature Jean F. Resvick Title R.L.S.
(County Surveyor, Registered Land Surveyor, or other duly authorized official)

Surveyors Registration No. S - 802

Office of Reg. of Deeds County of Oneida
I hereby certify that the within instrument was filed in this office for record on the 12th day of June 1986, and was filed in Book No. Page No. of County Records.

Signature [Signature] Title Reg. of Deeds
Township 39 North, Range 11 East, Section 11, Index No. E - 17, Page No.

Stock No. 26273

U.S. PUBLIC LAND SURVEY MONUMENT RECORD

Index No. E-17

State of Wisconsin } ss.
County of Oneida

I Kip W. Soder, do hereby certify that on the 1st day of August, 19 89, I found evidence of the Northeast corner of Section 10 Township 39 North, Range 11 East, Fourth Principal Meridian, as described hereon; and that from this evidence I established a new monument and accessories as described hereon to perpetuate the original location of this corner.

Resident witnesses:

Robert Conquest

History of original corner establishment:
Original Government Survey in 1859 by William E. Daugherty

A dependent resurvey by the General Land Office in 1941. Found the remains of the original bearing trees and set a concrete monument 24" long, 6" diameter with a brass cap marked; T 39 N, R 11 E, S3, S2, S11, S10, 1941.
Blazed and scribed the following B.T.'s: W. Pine 11" N57°W 721ks.
Maple 7" N40°E 50 lks., W. Pine 10" S58½°E 44 lks., W. Pine 20" S12°W 11 lks.

Description of corner evidence found:

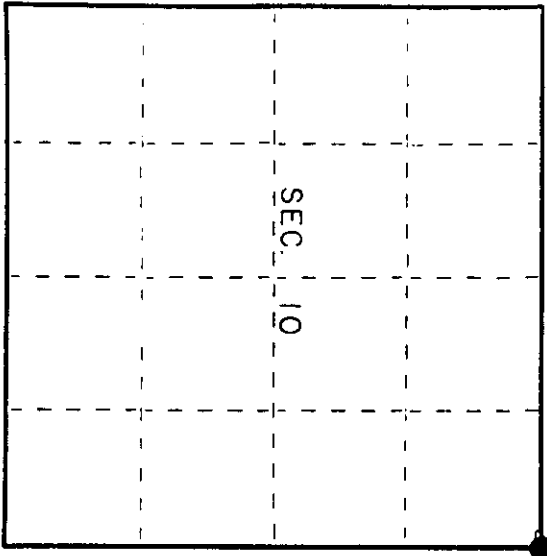
- 18" W. Pine Stp. N57°W 47.52 Feet
- 18" Hemlock Stp. S83°E 75.68 feet
- 9" N. Pine S52°W 37.66 feet

Found monument as described and in place, from which the preceding bear;

Description of monument and accessories I established to perpetuate the original location of this corner.

Blazed and scribed the following bearing trees;

- Maple 8" N72°E 7.07 feet.
- W. Pine 8" S87°W 43.36 feet
- W. Pine 36" S1°E 55.04 feet
- Set Steel Sign Post Northeast 1.0 feet



● = Corner monument restored.

Dated at Three Lakes, Wis., this 25th day of August, 19 89.
Signature: *Kip W. Soder* Title: Land Surveyor
(County Surveyor, Registered Land Surveyor, or other duly authorized official) Registration No. S-1731
Office of Register of Deeds, County of _____ I hereby certify that the within instrument was filed in this office for record on the _____ day of _____, 19 ____ at _____ o'clock _____ M.
(Register of Deeds)

By _____ Deputy

3911030000

