

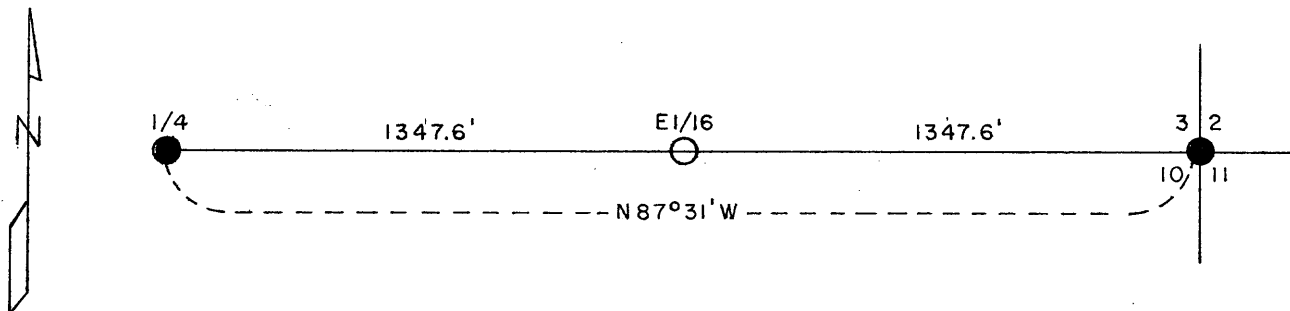
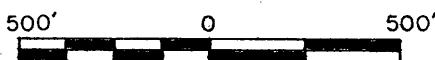
*This document has been accepted with advisory review of Robert Winit, County Surveyor. Doris Verage Kuehn, Register of Deeds*

REGISTER'S OFFICE  
 Oneida County, Wis.  
 Received for Record the 3rd day of March A. D. 1982 at 3:40 o'clock P.M. and recorded in Range 11 of Restoration corners  
*Doris Verage Kuehn*

Register  
 Sheet 1 of 2

CERTIFIED LAND CORNER RESTORATION AND ESTABLISHMENT  
 BEING THE SOUTHEAST CORNER AND THE SOUTH QUARTER CORNER  
 OF SECTION 3 AND THE EAST SIXTEENTH CORNER  
 BETWEEN SECTIONS 3 AND 10  
 TOWNSHIP 39 NORTH, RANGE 11 EAST, FOURTH PRINCIPAL MERIDIAN  
 ONEIDA COUNTY, WISCONSIN

SCALE



LEGEND

- 1941 GLO Dependent Resurvey Monument
- Corner position marked by a 2 1/2 inch diameter aluminum pipe 30 inches long with an aluminum cap stamped to identify the corner.

SURVEY NOTES

This survey was made by the U.S. Department of Agriculture, Forest Service for the purpose of restoring, establishing, marking and perpetuating those corners on the west half of the section line common to Sections 2 and 10, Township 39 North, Range 11 East, Fourth Principal Meridian, Oneida County, State of Wisconsin as shown on the plat map herewith.

The original Government subdivision survey of this township was made in 1859. A dependent resurvey of the township was made in 1941 by the U.S. Department of Interior, General Land Office. The corners of the dependent resurvey were used for control in this survey.

The corner positions are monumented by the monument described in the map legend.

The corner position established by this survey was located to an accuracy of one part in 3000. The bearings are from the 1941 resurvey.

The field notes of this survey and a copy of this plat of survey are on file in the Forest Supervisor's Office at Rhinelander, Wisconsin.

E-17  
 E-15  
 E-16

3911030020  
 3911030010  
 3911030000

CORNER ESTABLISHED1. East Sixteenth Corner between Sections 3 and 10, T39N, R11E.

Position established at midpoint and on line between the south quarter corner and the southeast section corner of Section 3.

Corner references:

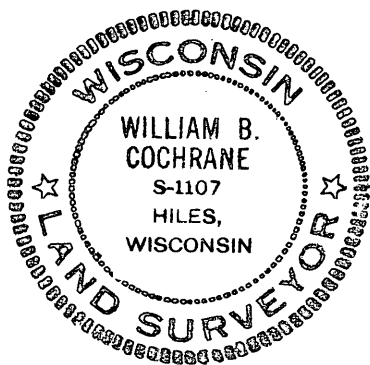
W. Birch 11"	N27°E	8.55 feet
W. Birch 9"	S59°E	21.76 feet
Steel Sign Post	North	0.50 feet

SURVEYOR'S AFFIDAVIT

State of Wisconsin)  
County of Oneida ) ss

I, William B. Cochrane, Land Surveyor, U.S. Forest Service, and a Registered Land Surveyor in the State of Wisconsin, hereby certify that I have retraced and surveyed the east half of the section line between Sections 3 and 10, Township 39 North, Range 11 East, Fourth Principal Meridian, State of Wisconsin as shown on the plat map herewith.

The plat map and notes are a correct representation of the corners recovered, and established. I have recovered and established these corners in accordance with the rules for the survey of the public lands and with the statutes of the State of Wisconsin.



*William B. Cochrane*

Land Surveyor, U.S. Forest Service  
R.L.S. State of Wisconsin  
Certificate S-1107

Date of Survey: 1980