

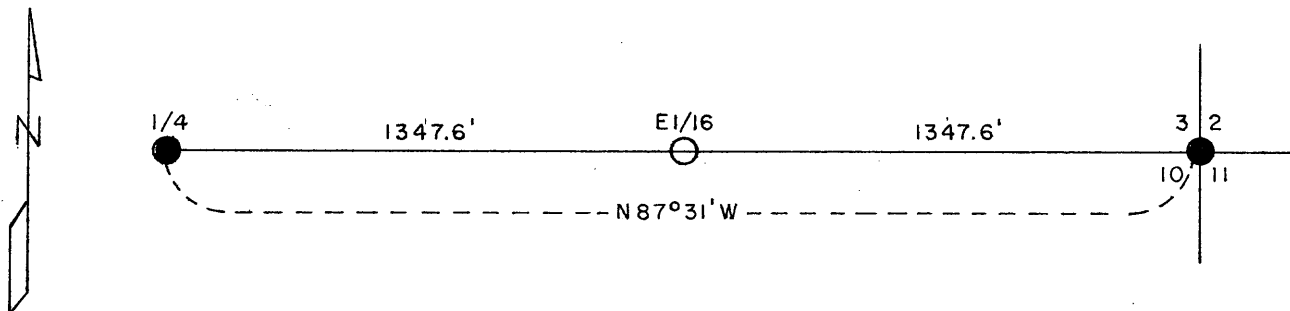
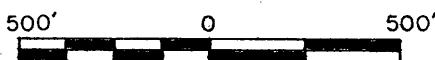
This document has been accepted with advisory review of Robert Winat, County Surveyor. Doris Verage Kuehn, Register of Deeds

REGISTER'S OFFICE
 Oneida County, Wis.
 Received for Record the 3rd day of March A. D. 1982 at 3:40 o'clock P.M. and recorded in Range 11 of Restoration corners
Doris Verage Kuehn

Register
 Sheet 1 of 2

CERTIFIED LAND CORNER RESTORATION AND ESTABLISHMENT
 BEING THE SOUTHEAST CORNER AND THE SOUTH QUARTER CORNER
 OF SECTION 3 AND THE EAST SIXTEENTH CORNER
 BETWEEN SECTIONS 3 AND 10
 TOWNSHIP 39 NORTH, RANGE 11 EAST, FOURTH PRINCIPAL MERIDIAN
 ONEIDA COUNTY, WISCONSIN

SCALE



LEGEND

- 1941 GLO Dependent Resurvey Monument
- Corner position marked by a 2 1/2 inch diameter aluminum pipe 30 inches long with an aluminum cap stamped to identify the corner.

SURVEY NOTES

This survey was made by the U.S. Department of Agriculture, Forest Service for the purpose of restoring, establishing, marking and perpetuating those corners on the west half of the section line common to Sections 2 and 10, Township 39 North, Range 11 East, Fourth Principal Meridian, Oneida County, State of Wisconsin as shown on the plat map herewith.

The original Government subdivision survey of this township was made in 1859. A dependent resurvey of the township was made in 1941 by the U.S. Department of Interior, General Land Office. The corners of the dependent resurvey were used for control in this survey.

The corner positions are monumented by the monument described in the map legend.

The corner position established by this survey was located to an accuracy of one part in 3000. The bearings are from the 1941 resurvey.

The field notes of this survey and a copy of this plat of survey are on file in the Forest Supervisor's Office at Rhinelander, Wisconsin.

E-17
 E-15
 E-16

3911030020
 3911030010
 3911030000

CORNER ESTABLISHED1. East Sixteenth Corner between Sections 3 and 10, T39N, R11E.

Position established at midpoint and on line between the south quarter corner and the southeast section corner of Section 3.

Corner references:

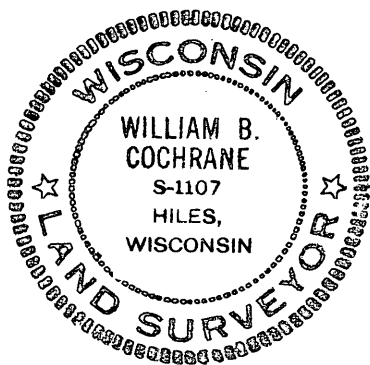
W. Birch 11"	N27°E	8.55 feet
W. Birch 9"	S59°E	21.76 feet
Steel Sign Post	North	0.50 feet

SURVEYOR'S AFFIDAVIT

State of Wisconsin)
County of Oneida) ss

I, William B. Cochrane, Land Surveyor, U.S. Forest Service, and a Registered Land Surveyor in the State of Wisconsin, hereby certify that I have retraced and surveyed the east half of the section line between Sections 3 and 10, Township 39 North, Range 11 East, Fourth Principal Meridian, State of Wisconsin as shown on the plat map herewith.

The plat map and notes are a correct representation of the corners recovered, and established. I have recovered and established these corners in accordance with the rules for the survey of the public lands and with the statutes of the State of Wisconsin.



William B. Cochrane

Land Surveyor, U.S. Forest Service
R.L.S. State of Wisconsin
Certificate S-1107

Date of Survey: 1980

U.S. PUBLIC LAND SURVEY MONUMENT RECORD

Index No. E-15

State of Wisconsin } ss. County of Oneida

I, Kip W. Soder, do hereby certify that on the 1st day of August, 1989, I found evidence of the North one-quarter corner of Section 10, Township 39 North, Range 11 East, Fourth Principal Meridian, as described hereon; and that from this evidence I established a new monument and accessories as described hereon to perpetuate the original location of this corner.

Resident witnesses: Robert Conquest

History of original corner establishment: Original Government Survey in 1859 by William E. Daugherty.

A dependent resurvey of the township was executed by the General Land Office in 1941. Set by remains of original corner, 6" dia. concrete monument, with a brass cap marked; 1/2, S3, S10, 1941. Blazed and scribed the following B.T.'s:

Cedar 6" N6 1/4°W 25 1/2 lks. Cedar 5" S69°-45'E 39 lks.

Description of corner evidence found:

Found monument as described and in place, from which the following bear;

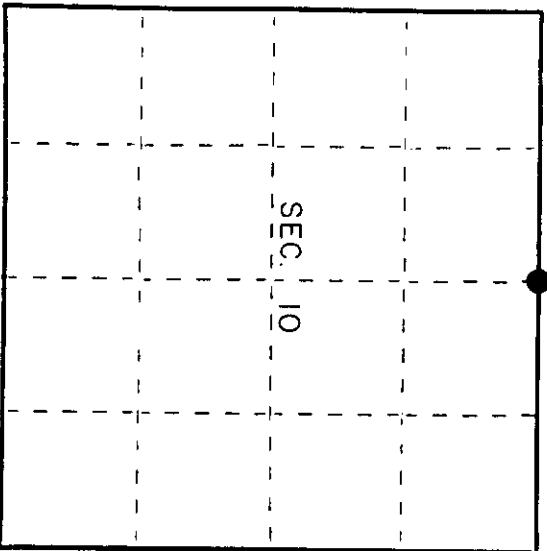
Cedar 8" N4°E 16.31 feet

Old Wood Post

Description of monument and accessories I established to perpetuate the original location of this corner. Blazed and scribed the following bearing trees;

Cedar 5" S35°E 19.91 feet Tamarack 7" S35°W 28.28 feet Cedar 7" N70°W 8.06 feet

Set Steel Sign Post Northeast 1.0 feet



● = Corner monument restored.

Dated at Three Lakes, Wis., this 25 day of August, 1989. Signature: Kip W. Soder, Land Surveyor, Registered Land Surveyor, or other duly authorized official. Title: Land Surveyor. Office of Register of Deeds, County of Oneida. Registration No. S-1731. I hereby certify that the within instrument was filed in this office for record on the ... day of ... 19... at ... o'clock ... M.

(Register of Deeds)

By: Deputy

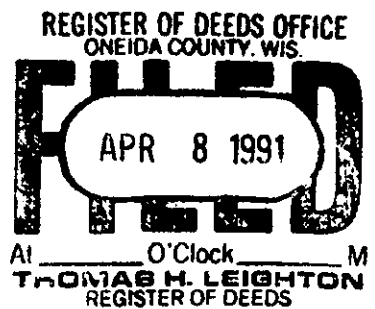
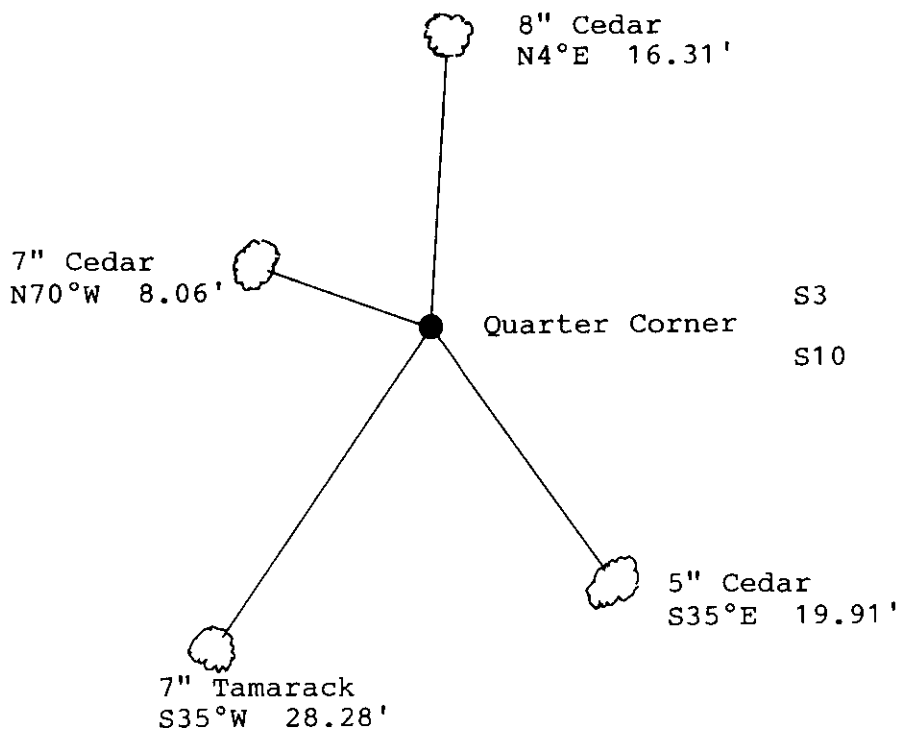
(e) Describe any material discrepancy between the location of the corner as restored or reestablished and the location of that corner as previously restored or reestablished by distance and direction. Show the discrepancy on the plan view drawing under (d), above. Show the distances between the corner as previously restored or reestablished and (1) the corner as restored or reestablished, and (2) to at least 2 of the witness monuments shown on the drawing in (d), above.

See drawing below.

(f) Was the corner restored through acceptance of (1) an obliterated evidence location, or, (2) a found perpetuated location?

Restored through acceptance of a found perpetuated location.

(g&h) Was the corner reestablished through lost corner proportionate methods? If so, show the method, including the directions and distances to other public land survey corners used as evidence or used for proportioning in determining the corner location?



(i) Kip W. Soder
(type or print name) certify that the corner location shown on this record was determined by me or under my direction and control and that this U.S. Public Land Survey Monument Record is correct and complete to the best of my knowledge and belief

Kip W. Soder Sept 8, 1989
Signature Date

Survey requested by: Pam York 11/5/90
District Ranger Date