

State of Wisconsin

CERTIFIED LAND CORNER RESTORATION
U. S. PUBLIC LAND SURVEY MONUMENT RECORD

Index No. E-11

County of Oneida } ss.

I James L. Will do hereby
certify that on the 7th day
of December 1982, I found
evidence of the South
corner of Section 4,
Township 39, North, Range
11 East, Fourth Principal Meridian,

as described hereon; and that from this evidence
I established a new monument and accessories
as described hereon to perpetuate the original
location of this corner.

Resident witnesses:

Eric Zychowski

History of original corner establishment:

Original corner was established in the course of the subdivision of
T 39 N, R 11 E which was completed in 1859 by William E. Daugherty,
Deputy Surveyor.
Original E.T.'s
12" Hemlock S 25° W 14 Lks.
9" Fir N 12 " 22 Lks.

Compared with all record data
& accepted as correct.

Robert D. David

Oneida County Surveyor 27 Apr 1983

Description of corner evidence found:

Found 1" dia. iron pipe set in January of 1974 by James L. Will under the
direction of Robert E. Badow. No evidence of the corner could be found
at that time. The corner was set by single proportion between the Section
corners to the East and West as shown on the reverse side of this form.

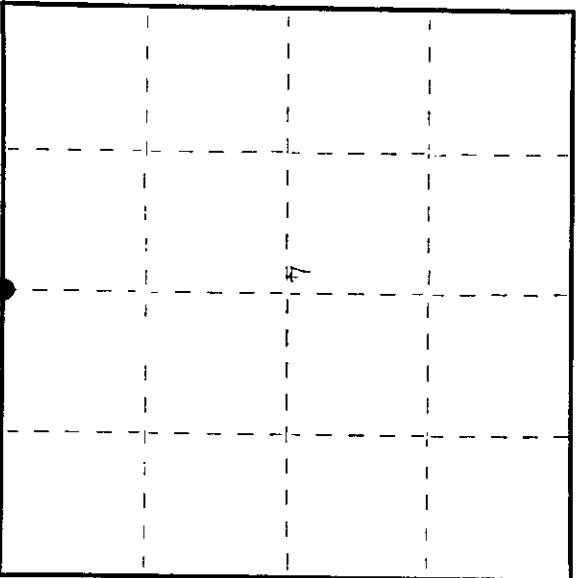
Found the following Bearing Trees which were made in said 1974 survey.
1" Maple N 30° W 4.80 feet
10" Maple S 63° E 11.60 feet

Description of monument and accessories I established to perpetuate the original location of this corner.

Set 4" x 4" Cedar Post Northeast of the corner.

Set four 1" dia. iron pipe reference monuments as shown on the reverse
side of this form.

Replaced iron pipe corner with a 2" x 5" Aluminum magnetic capped
monument and stamped the cap to identify the corner.



● = Corner monument restored.

Dated at Maple River, Wis. this 16th day of December, 1982.

Signature James L. Will Title Deputy County Surveyor Registration No. S-1410
(County Surveyor, Registered Land Surveyor or other duly authorized official)

Office of Register of Deeds, County of Oneida, I hereby certify that the within
instrument was filed in this office for record on the 11 day of May, 1983
at 4:15 o'clock P. M.

Dora Veragge Kuehn
(Register of Deeds)

By James L. Will Deputy

3911040020

(e) Describe any material discrepancy between the location of the corner as restored or reestablished and the location of that corner as previously restored or reestablished by distance and direction. Show the discrepancy on the plan view drawing under (d), above. Show the distances between the corner as previously restored or reestablished and (1) the corner as restored or reestablished, and (2) to at least 2 of the witness monuments shown on the drawing in (d), above.

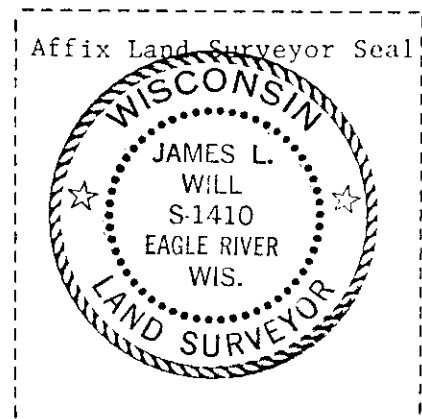
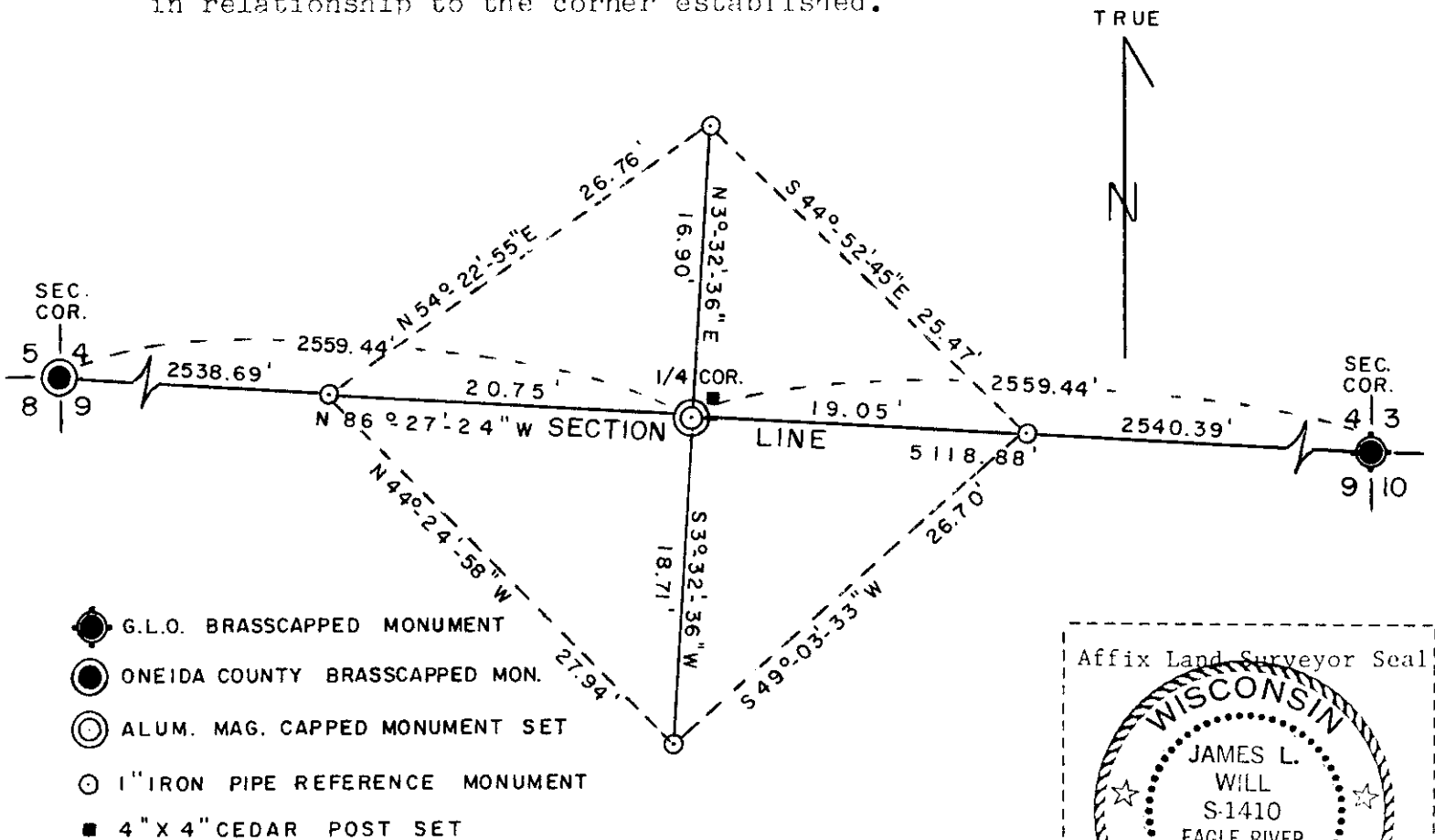
See drawing below.

(f) Was the corner restored through acceptance of (1) an obliterated evidence location, or, (2) a found perpetuated location?

Corner was restored by single proportionate measure from the Section corners to the East and West since no evidence of the corner location could be found.

(g&h) Was the corner reestablished through lost corner proportionate methods? If so, show the method, including the directions and distances to other public land survey corners used as evidence or used for proportioning in determining the corner location?

Corner was established by single proportionate measure. The corners used in proportioning this location are shown in the drawing below in relationship to the corner established.



(i) I, James L. Will; R.L.S.#1410
 (type or print name) certify that the corner location shown
 on this record was determined by me or under my direction and
 control and that this U.S. Public Land Survey Monument Record is
 correct and complete to the best of my knowledge and belief.

James L. Will
 Signature

12-16-82
 Date