

**CERTIFIED LAND CORNER RESTORATION
U. S. PUBLIC LAND SURVEY MONUMENT RECORD**

Index No. C-13

State of Wisconsin }
County of Oneida } ss.

I James T. Will do hereby
certify that on the 7th day
of December, 1982, I found
evidence of the East
corner of Section 4,
Township 39
11 East, North, Range
Fourth Principal Meridian,
as described hereon; and that from this evidence
I established a new monument and accessories
as described hereon to perpetuate the original
location of this corner.

Resident witnesses:
Eric Zynowski

History of original corner establishment:

Original corner was established in the course of the subdivision of
T 39 N, R 11 E which was completed in 1859 by William E. Daugherty,
Deputy Surveyor.
Original S.T.'s
8" Cedar N 61° E 27 lks.
8" Cedar S 86° W 4 lks.

Description of corner evidence found:

Found a G.L.C. brasscapped monument in place.
Found the following bearing trees:
15" Spruce S 12° E 71.80 feet
16" Birch N 78° W 25.50 feet.
10" Cedar N 49° W 50.73 feet.

Description of monument and accessories I established to perpetuate the original location of this corner.

Set 4" x 4" Cedar post Northeast of the corner.

Set four 1" dia. iron pipe reference monuments as shown on the reverse
side of this form.

Compared with all record
data & accepted as correct.

Patrick Kane

Oneida County Surveyor 27 Apr 1983

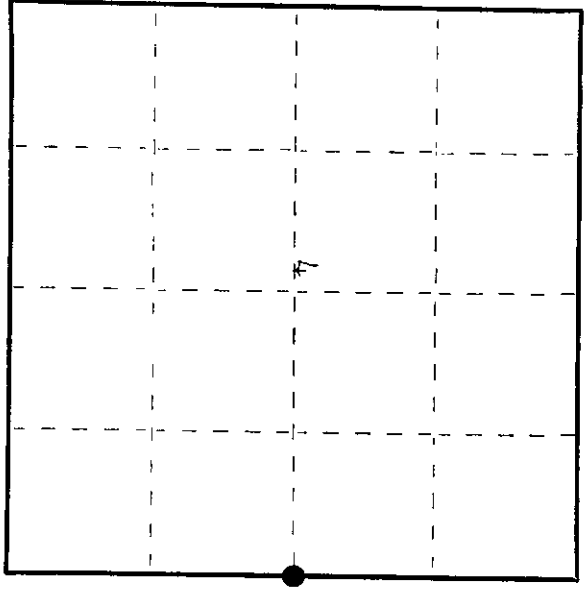
Dated at Eagle River, Wis., this 16th day of December, 1982.

Signature: *James T. Will* Title Deputy County Surveyor Registration No. S-1410
(County Surveyor, Registered Land Surveyor, or other duly authorized official)

Office of Register of Deeds, County of Oneida
Instrument was filed in this office for record on the 11 day of May, 1983
at 4:15 o'clock P. M.

James Deary
(Register of Deeds)

By: *Regina A. Pits* Deputy



● = Corner monument restored.

3911042000

(e) Describe any material discrepancy between the location of the corner as restored or reestablished and the location of that corner as previously restored or reestablished by distance and direction. Show the discrepancy on the plan view drawing under (d), above. Show the distances between the corner as previously restored or reestablished and (1) the corner as restored or reestablished, and (2) to at least 2 of the witness monuments shown on the drawing in (d), above.

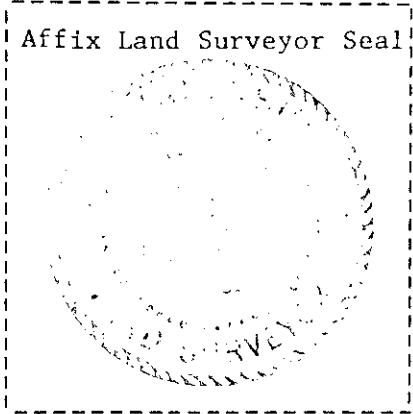
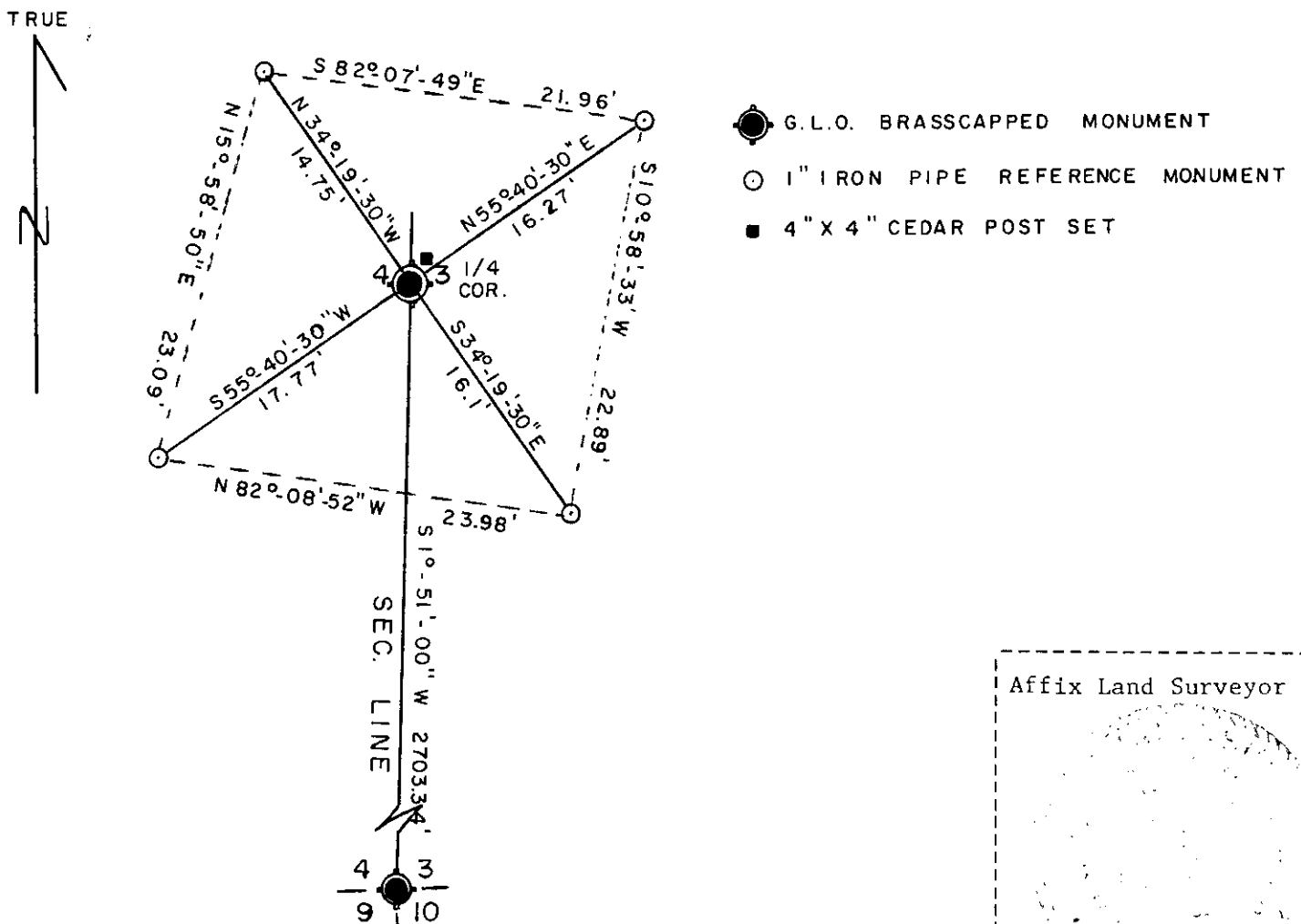
See drawing below.

(f) Was the corner restored through acceptance of (1) an obliterated evidence location, or, (2) a found perpetuated location?

Corner was restored and perpetuated by the Government Land Office and we accepted this position.

(g&h) Was the corner reestablished through lost corner proportionate methods? If so, show the method, including the directions and distances to other public land survey corners used as evidence or used for proportioning in determining the corner location?

See (f)



(i) I, James L. Will, R.L.S.#1410
 (type or print name) certify that the corner location shown on this record was determined by me or under my direction and control and that this U.S. Public Land Survey Monument Record is correct and complete to the best of my knowledge and belief.

James L. Will
 Signature

12-16-82
 Date