

State of Wisconsin

County of Oneida } ss.

I James L. Will, do hereby certify that on the 30th day of January, 1990, I found evidence of the Southeast corner of Section 5 Township 39, North, Range 11, Fourth Principal Meridian, as described hereon; and that from this evidence I established a new monument and accessories as described hereon to perpetuate the original location of this corner.

Resident witnesses:
Michael E. Weber

U. S. Public Land Survey Monument Record

Index No. E-9

History of original corner establishment:

Original corner was established during the course of the subdivision of T 39 N, R 11 E which was started Sept. 6, 1859 and finished Sept. 10, 1859 by Deputy Surveyor, William E. Daugherty.

Original B.T.'S:

7" Maple N 23° E 15 lks.
9" Birch S 6° W 39 lks.

Description of corner evidence found:

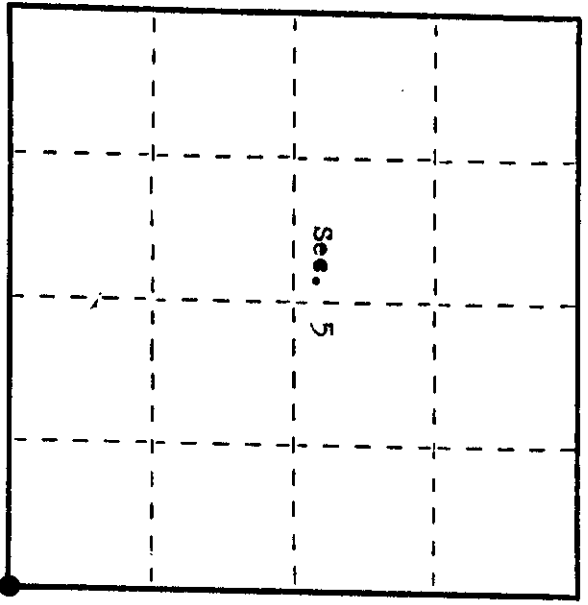
Found a 2" iron pipe brass cap set by A.J. Lytle

Found Bearing Trees:

15" Oak S 36° E 7.03 feet to nail in side
14" Oak N 25° W 37.23 feet to nail in side
15" N. Pine S 88° W 47.65 feet to nail in side

Description of monument and accessories I established to perpetuate the original location of this corner.
Set Oneida County Plastic Marker 1.0 feet plus or minus Northeast of Corner.

Made New Bearing Tree: 17" W. Pine N 8° W 17.96 feet to nail in side



● = Corner monument restored.

Dated at Bagle River Wis., this 30th day of January, 1990

Signature James L. Will Title Reg. Land Surveyor Registration No. 1410
(County Surveyor, Registered Land Surveyor, or other duly authorized official)

Office of Register of Deeds, County of _____, I hereby certify that the within instrument was filed in this office for record on the _____ day of _____, 19____ at _____ o'clock _____ M.

(Register of Deeds)

By _____ Deputy

Describe any material discrepancy between the location of the corner as restored or reestablished and the location of that corner as previously restored or reestablished by distance and direction. Show the discrepancy on the plan view drawing under (d), above. Show the distances between the corner as previously restored or reestablished and (1) the corner as restored or reestablished, and (2) to at least 2 of the witness monuments shown on the drawing in (d), above.

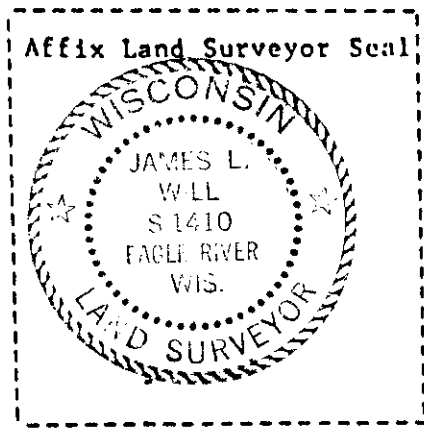
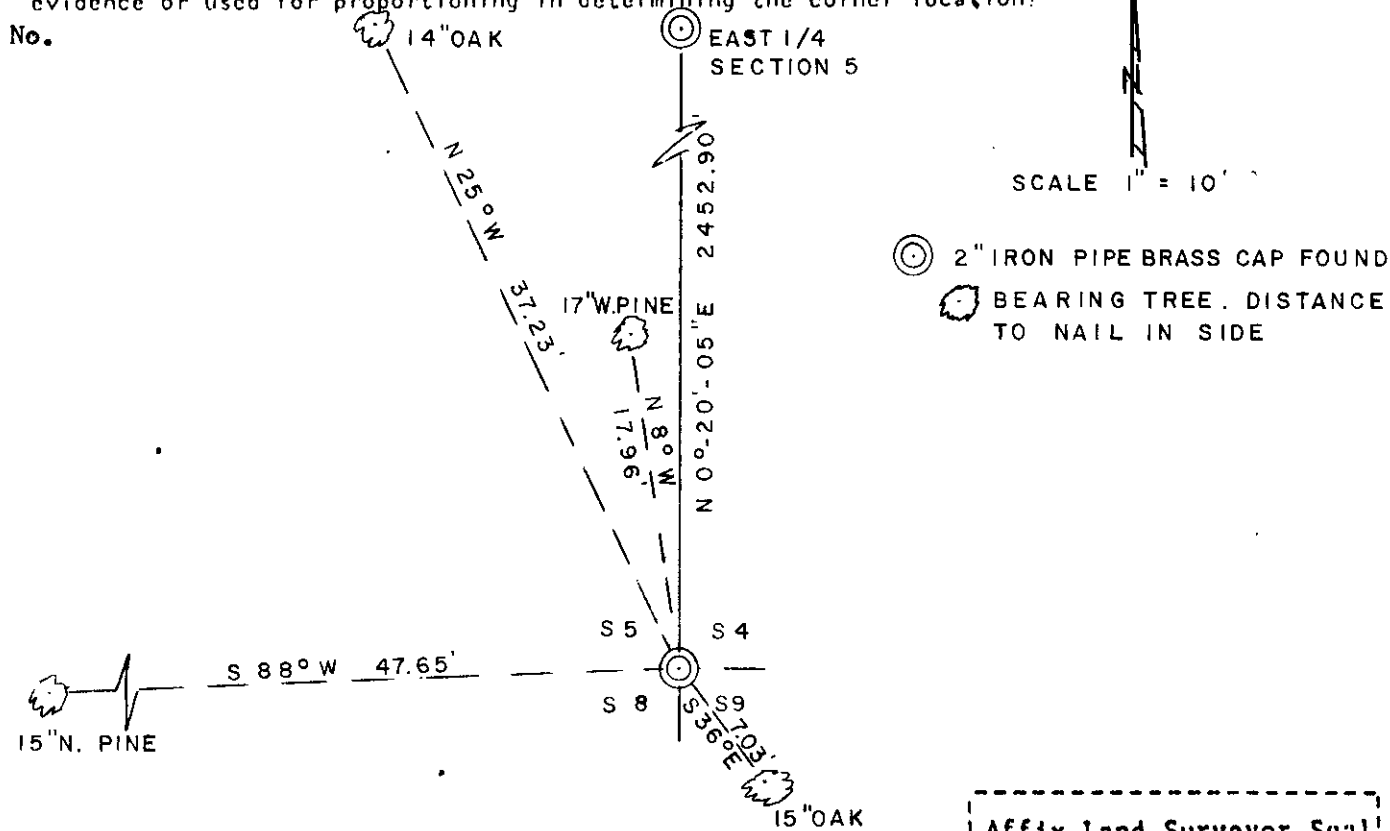
None. See sketch below.

Was the corner restored through acceptance of (1) an obliterated evidence location, or, (2) a found perpetuated location?

Corner was restored through acceptance of a found perpetuated location.

Was the corner reestablished through lost corner proportionate methods? If so, show the method, including the directions and distances to other public land survey corners used as evidence or used for proportioning in determining the corner location?

No.



I, James L. Will R.L.S. #1410
 (type or print name) certify that the corner location shown on this record was determined by me or under my direction and control and that this U.S. Public Land Survey Monument Record is correct and complete to the best of my knowledge and belief.

James L. Will January 30, 1990
 Signature Date