

Stock No. 26273

U.S. PUBLIC LAND SURVEY MONUMENT RECORD

Index No. E 7

State of Wisconsin

County of Oneida } ss.

I, John H. Fisher, do hereby

certify that on the 17 day

of December 19 84, I found

evidence of the North one quarter

corner of Section 8

Township 39 North, Range

11 East, Fourth Principal Meridian,

as described hereon; and that from this evidence

I established a new monument and accessories

as described hereon to perpetuate the original

location of this corner.

Resident witnesses:

None

History of original corner establishment:
The original Government Survey was performed by William E. Daugherty
in 1859.
Wood post set:

Hemlock	12"	N25°E	35 lks
Birch	18"	S20°E	11 lks

Description of corner evidence found:

Oneida County brass tablet on 2" iron pipe stamed to identify corner

Description of monument and accessories I established to perpetuate the original location of this corner.
Blazed and scribed the following new bearing trees.
Set nail in:

Maple	9"	N30°W	21.41 feet
Maple	7"	N69°W	18.65 feet
Maple	7"	S30°W	15.12 feet
Maple	9"	S36°E	10.77 feet

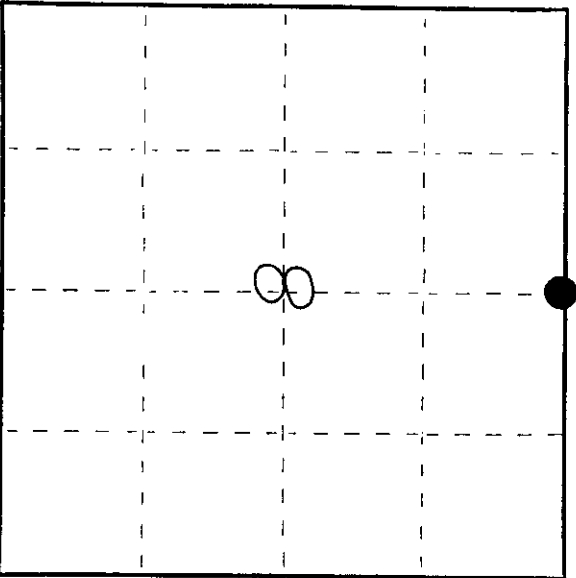
Dated at Minocqua, Wis., this 27th day of June, 1985

Signature: *John H. Fisher* Title: Registered Land Surveyor Registration No. S-836
(County Surveyor, Registered Land Surveyor, or other duly authorized official)

Office of Register of Deeds, County of Oneida, I hereby certify that the within
instrument was filed in this office for record on the 19th day of June, 1985
at 10 o'clock A.M.

(Register of Deeds)

By: _____ Deputy



○ = Corner monument restored.

3911050020

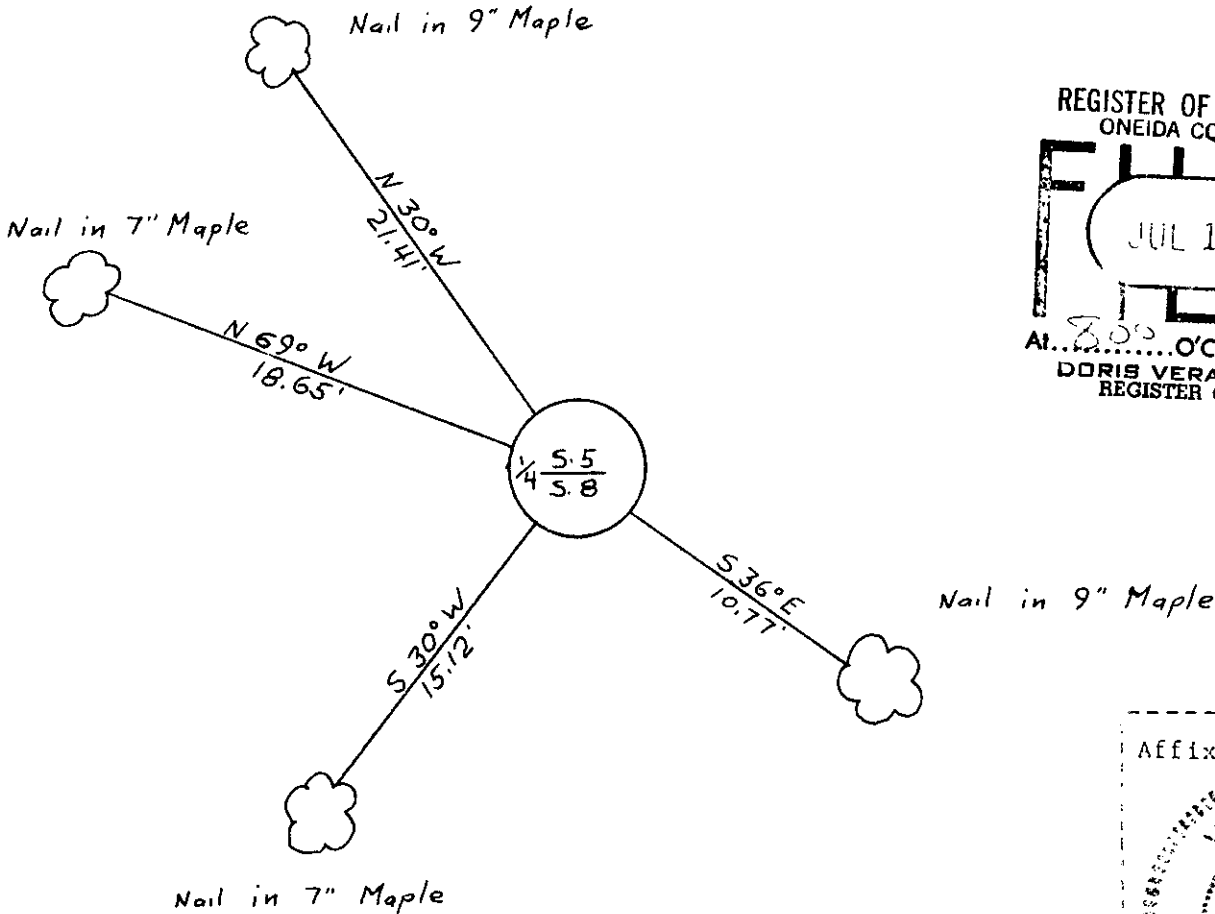
(e) Describe any material discrepancy between the location of the corner as restored or reestablished and the location of that corner as previously restored or reestablished by distance and direction. Show the discrepancy on the plan view under (d), above. Show the distances between the corner as previously restored or reestablished and (1) the corner as restored or reestablished, and (2) to at least 2 of the witness monuments shown on the drawing in (d), above.

See drawing below

(f) Was the corner restored through acceptance of (1) an obliterated evidence location, or, (2) a found perpetuated location?

Found perpetuated location

(g&h) Was the corner reestablished through lost corner proportionate methods? If so, show the method, including the directions and distances to other public land survey corners used as evidence or used for proportioning in determining the corner location?



REGISTER OF DEEDS OFFICE
ONEIDA COUNTY, WIS.
FILED
JUL 1 1 1986
At 8:00 O'Clock A.M.
DORIS VERAGE KUEHN
REGISTER OF DEEDS

Affix Land Surveyor Seal
WISCONSIN
JOHN H. FISHER
SURVEYOR
MINNEQUA,
WIS.

(1) I, John H. Fisher
(type or print name) certify that the corner location shown on this record was determined by me or under my direction and control and that this U.S. Public Land Survey Monument Record is correct and complete to the best of my knowledge and belief.

John H. Fisher
Signature

6/27/85
Date