

State of Wisconsin

County of Oneida } ss.

I James L. Will do hereby certify that on the 25th day of October 1989, I found evidence of the Northwest Section corner of Section 8 Township 59 North, Range 11 East, Fourth Principal Meridian, as described hereon, and that from this evidence I established a new monument and accessories as described hereon to perpetuate the original location of this corner.

Resident witnesses:

Michael E. Weber

U. S. Public Land Survey Monument Record

Index No. E 5

History of original corner establishment:

Original corner was established during the course of the subdivision of T 29 N, R 11 E, which was started Sept. 6, 1859 and completed Oct. 1, 1860 by Wm. W. Daugherty, Top. Surveyor.

Original Survey: 30' W. Pine S 170 W 65 lks 180 W. Pine N 200 E 55 lks.

1247' N. of Lytle Iron pipe 10' below S.W. face of road  
Dist. is: 100 Oak N 240 E 57.5 lks 60 Oak N 900-301 W 56 lks.

Witness Corner 1 Iron Pipe brass cap set 50 lks east.  
Description of corner evidence found:

Found iron rod in road 21' west of centerline.

Found on iron pipe brass cap witness corner by Lytle S 600 E 37.50'

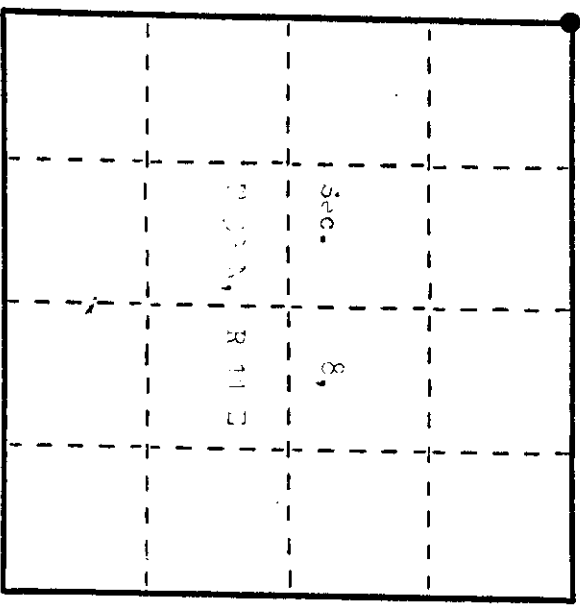
Found the following bearing trees measured to a nail in the side of the trunk:  
160 Oak S 650 E 66.00'  
on Lytle S 600 E 20.11' to center of stump

Description of monument and accessories I established to perpetuate the original location of this corner.

Bore the following new corner trees (assayed to a nail in the side of the trunk)

on Lytle S 520 W 44.56'  
on Lytle S 270 E 74.62'

Set a white plastic county sign marker northeast of the witness corner.



Dated at Eagle River, Wis., this 22nd day of November, 1989.

Signature: James L. Will Title: Registered Land Surveyor Registration No. 5-1410  
(County Surveyor, Registered Land Surveyor, or other duly authorized official)

Office of Register of Deeds, County of Oneida, I hereby certify that the within instrument was filed in this office for record on the 22nd day of November, 1989 at 10:00 o'clock A.M.

(Register of Deeds)

By: Deputy

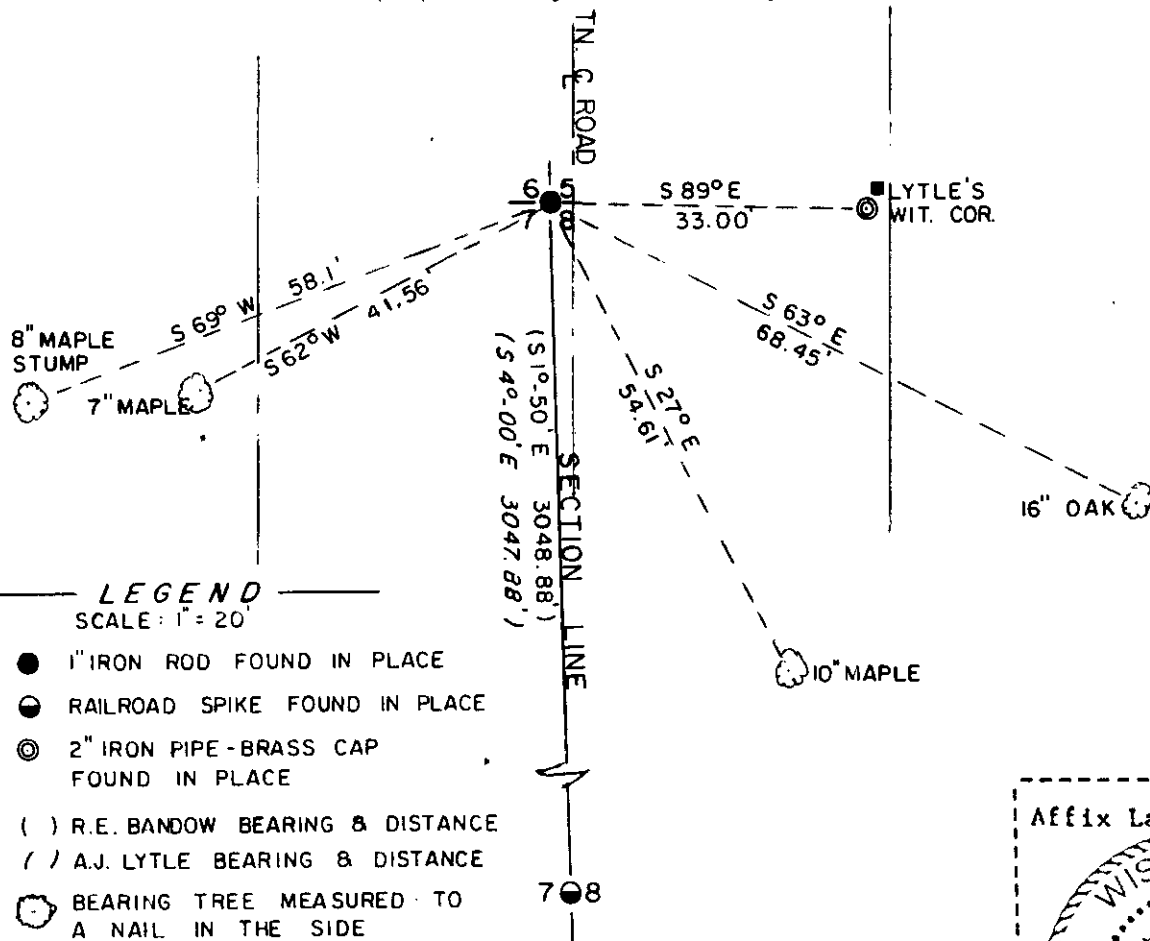
Describe any material discrepancy between the location of the corner as restored or reestablished and the location of that corner as previously restored or reestablished by distance and direction. Show the discrepancy on the plan view drawing under (d), above. Show the distances between the corner as previously restored or reestablished and (1) the corner as restored or reestablished, and (2) to at least 2 of the witness monuments shown on the drawing in (d), above.

None. See sketch below.

Was the corner restored through acceptance of (1) an obliterated evidence location, or, (2) a found perpetuated location?

Corner was restored through acceptance of a found perpetuated location.

Was the corner reestablished through lost corner proportionate methods? If so, show the method, including the directions and distances to other public land survey corners used as evidence or used for proportioning in determining the corner location?



LEGEND  
SCALE: 1" = 20'

- 1" IRON ROD FOUND IN PLACE
- ⊙ RAILROAD SPIKE FOUND IN PLACE
- ⊙ 2" IRON PIPE-BRASS CAP FOUND IN PLACE
- ( ) R.E. BANDOW BEARING & DISTANCE
- / / A.J. LYTLE BEARING & DISTANCE
- ⊙ BEARING TREE MEASURED TO A NAIL IN THE SIDE
- PLASTIC SIGN MARKER SET



I, James L. Will, R.D.S. # 100  
(type or print name) certify that the corner location shown on this record was determined by me or under my direction and control and that this U.S. Public Land Survey Monument Record is correct and complete to the best of my knowledge and belief.

Signature

Nov. 22, 1989  
Date