

State of Wisconsin

County of Cheida } ss.

U. S. Public Land Survey Monument Record

Index No. E-3

I, James H. Will, do hereby certify that on the 28th day of January, 1986, I found evidence of the South one-quarter corner of Section 6, Township 39, North, Range 11 East, Fourth Principal Meridian, as described hereon; and that from this evidence I established a new monument and accessories as described hereon to perpetuate the original location of this corner.

Resident witnesses:

Michael M. Weber

History of original corner establishment:

Original corner was established during the course of the subdivision of T 39 N, R 11 E which was started on Sept. 6, 1859 and completed Sept. 10, 1859 by William E. Daugherty, Deputy Surveyor,

Original B.T.'s:

- 12" Birch S 43° E 25 lks.
- 8" Birch N 75° W 31 lks.

Description of corner evidence found:

Found a 1" iron pipe and 3"x3" old wood post N 70° E 1.32' used in previous surveys.

Found the following bearing trees in place:

- 13" Oak N 58° W 8.00' (Measurements are to a nail in the
- 26" W. Pine N 11° E 33.85' side of the tree.)

Description of monument and accessories I established to perpetuate the original location of this corner.

Placed and scribbled the following new bearing trees:

- 19" Oak S 50° W 21.64' (Measurements are to a nail in the side
- 1 1/4" Oak N 41° E 15.83' of the trees.)

Replaced the iron pipe with a 2 1/4"x30" Cheida Co. magnetic aluminum capped monument 5" above the ground.

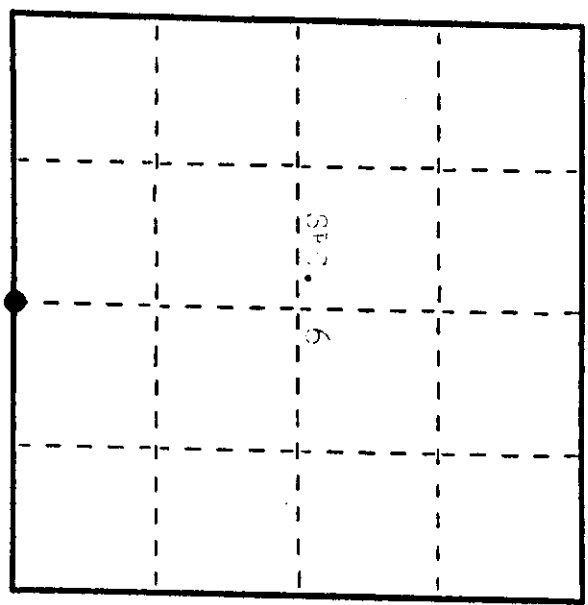
Dated at Farle river, Wis., this 28th day of January, 1986

Signature James H. Will Title Registered Land Surveyor Registration No. S-14410
(County Surveyor, Registered Land Surveyor, or other duly authorized official)

Office of Registrar of Deeds, County of Cheida I hereby certify that the within instrument was filed in this office for record on the 1st day of February, 1986 at 8:00 o'clock P.M.

David Hancock
(Registrar of Deeds)

By Supriya Q. Gait Deputy



● = Corner monument restored.

05000960020

Describe any material discrepancy between the location of the corner as restored or reestablished and the location of that corner as previously restored or reestablished by distance and direction. Show the discrepancy on the plan view drawing under (d), above. Show the distances between the corner as previously restored or reestablished and (1) the corner as restored or reestablished, and (2) to at least 2 of the witness monuments shown on the drawing in (d), above.

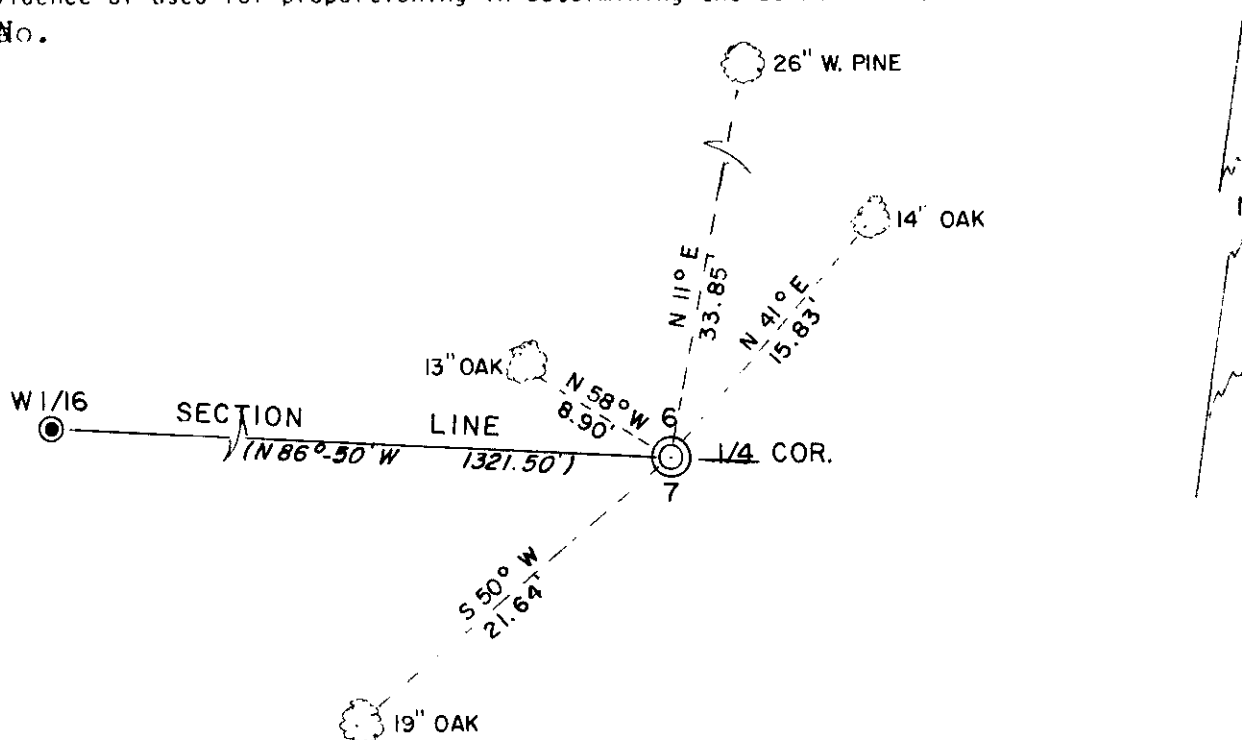
None. See sketch below.

Was the corner restored through acceptance of (1) an obliterated evidence location, or, (2) a found perpetuated location?

Corner was restored through acceptance of a found perpetuated location,

Was the corner reestablished through lost corner proportionate methods? If so, show the method, including the directions and distances to other public land survey corners used as evidence or used for proportioning in determining the corner location?

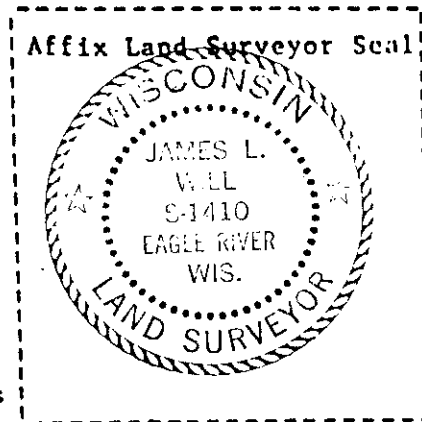
No.



LEGEND

SCALE: 1" = 10'

- ⊙ ONEIDA CO. MAGNETIC ALUMINUM CAPPED MONUMENT SET
- 3" DIA. CONCRETE MONUMENT FOUND IN PLACE
- (/) H.S. TUTTLE BEARING & DISTANCE



I, James L. Will, R.L.S. #1410

(Type or print name) certify that the corner location shown on this record was determined by me or under my direction and control and that this U.S. Public Land Survey Monument Record is correct and complete to the best of my knowledge and belief.

James L. Will
Signature

January 28, 1986
Date