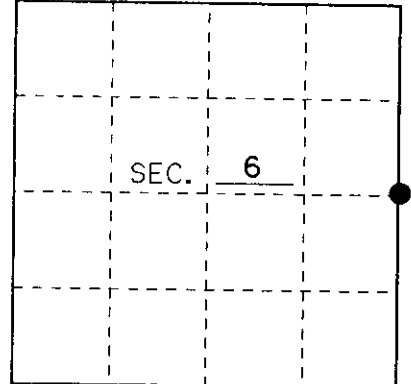


U.S. PUBLIC LAND SURVEY MONUMENT RECORD

Note: This form is intended and designed to fulfill all requirements of Wisconsin Administrative Code, Chapter A-E 7.08 U.S. Public Land Monument Record (3)(a)(b)(c)(d)(e)(f)(g)(h)(i). An additional sheet may be added if necessary to conform with said requirements.

(a) CORNER LOCATION: East Line County or State Plane Coordinates
E 1/4 Corner of Section 6 Northing _____
 Township 39 North Easting _____
 Range 11 East Datum Base _____
 Township/City Three Lakes County of Oneida



(b) HISTORY OF ORIGINAL CORNER ESTABLISHMENT Original B.T.'s
 Original Surveyor: William E. Daugherty 10" Maple N 10°E 49Lks.
 Date of Survey: September 1859 15" Birch S 59°W 10Lks.

(b)(f)(g)(h) Description of monument found at this corner and if it was accepted, state all evidence (material, testimonial, occupational, plats, records, other monuments) used as a basis for accepting. If not accepted or if nothing was found, state evidence used as basis for establishing location. If reestablished through lost corner proportionate methods, indicate all monuments, distances and directions used to establish. Indicate type of monument and sign post found or set.

SEPTEMBER 1859: WILLIAM E. DAUGHERTY SET E 1/4 WITH WOOD POST

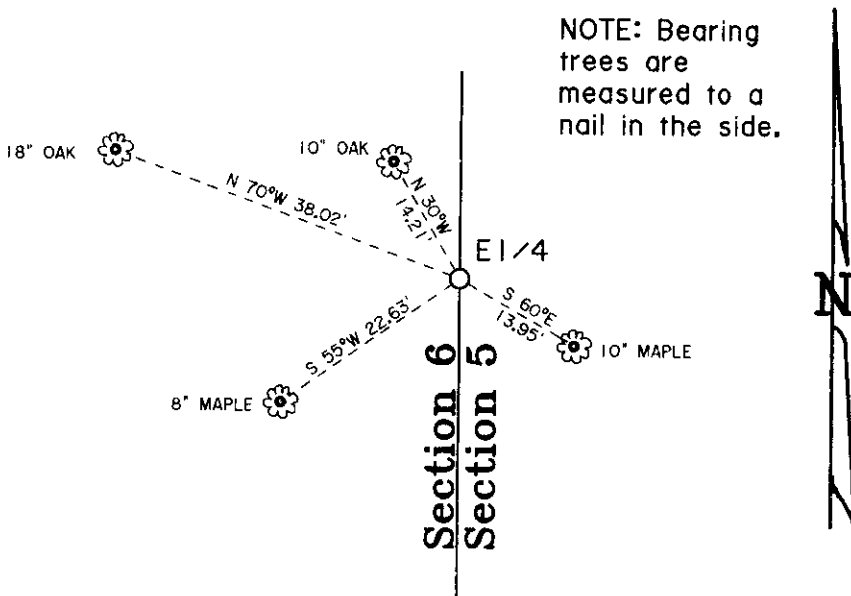
1947: HAROLD S. TUTTLE FOUND A CONCRETE MONUMENT AND USES AS HIS EAST 1/4 IN HIS SURVEY

12-22-54: ROBERT E. BANDOW FOUND A CONCRETE MONUMENT AND USES IT AS THE EAST 1/4 OF SECTION SIX IN HIS SURVEY MAP#1558-1.

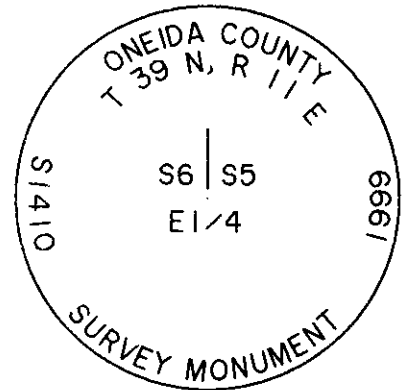
10-25-99: I, JAMES L. WILL, FOUND A 4" x 4" CONCRETE MONUMENT 1.3' ABOVE THE GROUND. I ALSO FOUND A BENT OVER 1 1/4" IRON PIPE WITH A COMPASS BEARING OF N 55°E, 3.8'. I FOUND A 2" IRON PIPE WITH A COMPASS BEARING OF N 90°W .85'. I FOUND A PLASTIC SIGN POST 1' SOUTH WEST. I REPLACED THE CONCRETE MONUMENT WITH A 2" x 30" ONEIDA COUNTY ALUMINUM MONUMENT WITH AN MAGNETIC ALUMINUM CAPPED STAMPED TO IDENTIFY THE CORNER AS SHOWN BELOW. I SET THIS MONUMENT .5 FEET ABOVE THE GROUND. I ALSO MADE FOUR NEW BEARING TREES AS SHOWN BELOW.

(c)(d)(e) Plan view of the corner with ties to at least 4 witness monuments. If in disagreement with previously established corner, show the distances between the two corners and also indicate the ties to the disputed.

SCALE: 1" = 20'

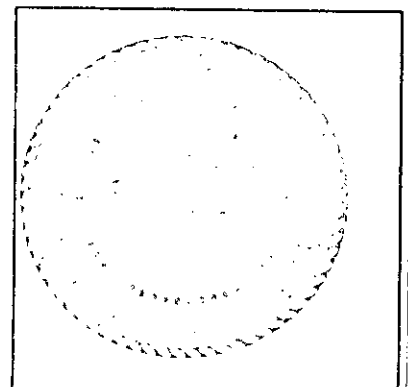


NOTE: Bearing trees are measured to a nail in the side.



(i) I, James L. Will R.L.S. No. 1410
 hereby certify that the corner location on this record was determined by me or under my direction and control and that this U.S. Public Land Survey Monument Record is correct and complete to the best of my knowledge and belief.

Signature James L. Will Date 10-25-99



3911062000

Index No. C-5