

State of Wisconsin

County of Oneida } ss.

I James L. Hill, do hereby certify that on the 25th day of October, 1989, I found evidence of the last meander corner of between Sec. 7 & 16 Township 39 North, Range 11 East, Fourth Principal Meridian, as described hereon; and that from this evidence I established a new monument and accessories as described hereon to perpetuate the original location of this corner.

Resident witnesses:

Michael E. Weber

U. S. Public Land Survey Monument Record

Index No. J-5

History of original corner establishment:

Original corner to Sections 7, 8, 17, & 18 was set as a meander corner. The original position now falls in Long Lake. Original Township subdivision was done by William E. Daugherty in Sept., 1859.

Original section corner B.T.'s:

18" W. Pine S 10° W 30 lks.
12" W. Pine N 20° W 28 lks.

Description of corner evidence found:

Found a 2" iron pipe brass cap meander corner between Sections 7 & 18 set by A.J. Lytle in 1947. Corner is 10 feet west of Long Lake, and 16.50 feet of A.J. Lytle's section corner in Lake.

Description of monument and accessories I established to perpetuate the original location of this corner. Made the following new bearing trees measured to a nail in the side:

- 10" Maple S 62° W 2.04'
5" W. Pine N 79° W 5.72'
10" Oak N 42° W 5.04'
11" Oak N 15° W 35.85'

Set white plastic sign marker northeast of the corner.

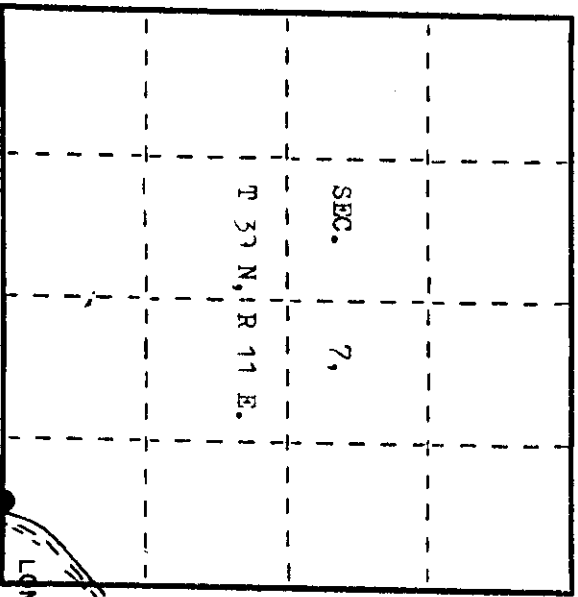
Dated at Eagle River, Wis., this 20th day of December, 1989.

Signature: [Signature] Title: Registered Land Surveyor Registration No. S-1410 (County Surveyor, Registered Land Surveyor, or other duly authorized official)

Office of Register of Deeds, County of Oneida, I hereby certify that the within instrument was filed in this office for record on the 19th day of October, 1989, at 10:00 o'clock A.M.

(Register of Deeds)

By: [Signature] Deputy



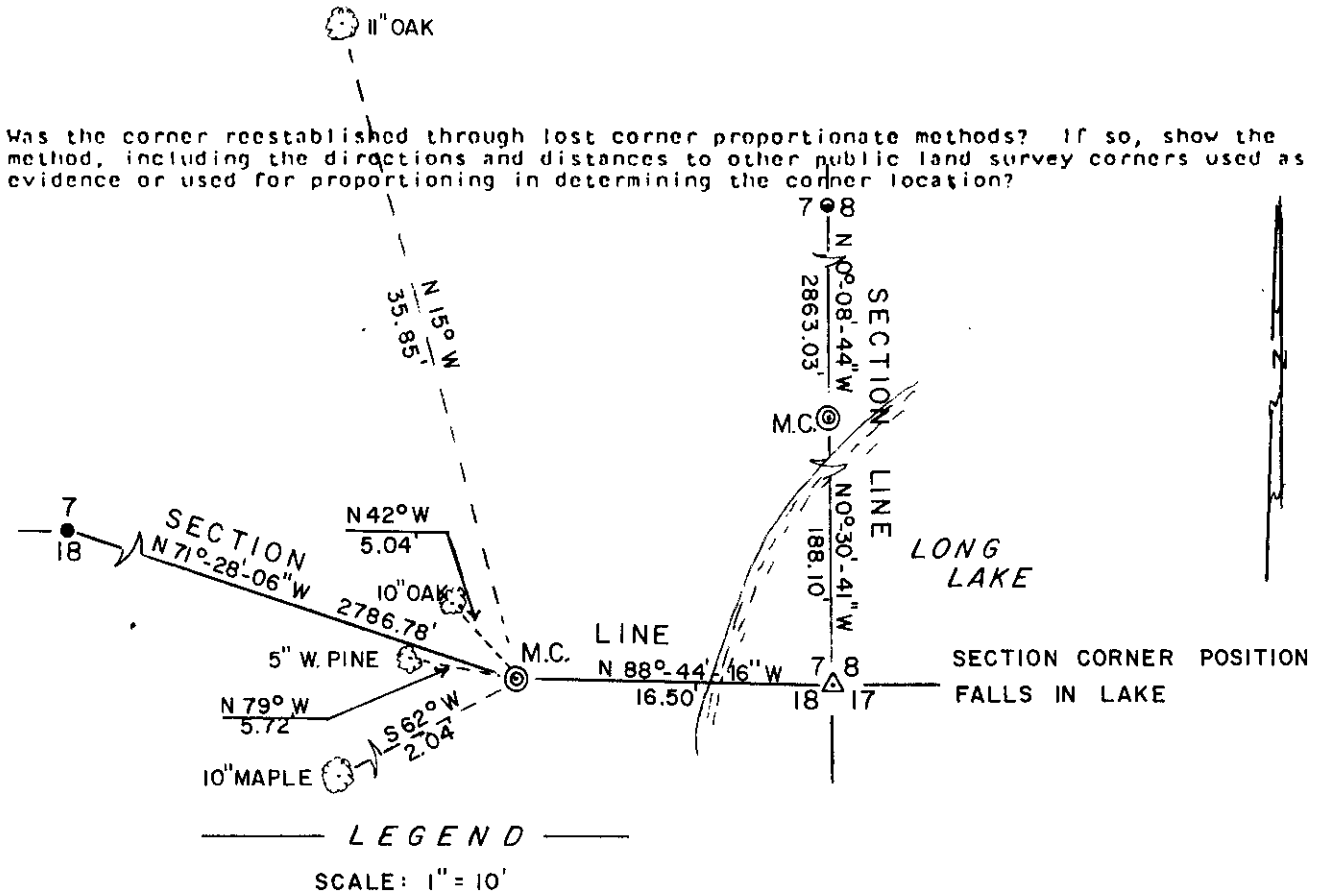
● = Corner monument restored.

Describe any material discrepancy between the location of the corner as restored or reestablished and the location of that corner as previously restored or reestablished by distance and direction. Show the discrepancy on the plan view drawing under (d), above. Show the distances between the corner as previously restored or reestablished and (1) the corner as restored or reestablished, and (2) to at least 2 of the witness monuments shown on the drawing in (d), above.

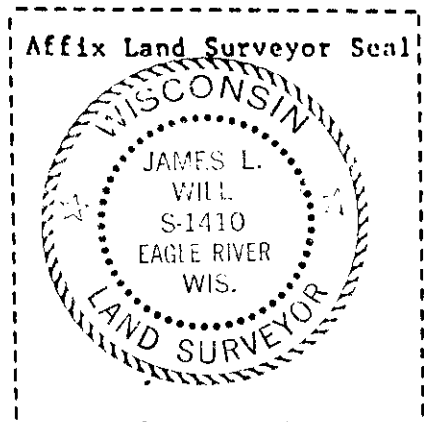
See sketch below.

Was the corner restored through acceptance of (1) an obliterated evidence location, or, (2) a found perpetuated location?

Corner was restored through acceptance of a found perpetuated location.



- 1" IRON PIPE IN PLACE
- RAILROAD SPIKE IN PLACE
- ⊙ 2" IRON PIPE - BRASS CAP ONEIDA CO. MONUMENT BY A.J. LYTLE - 1947
- ⊙ BEARING TREE MEASURED TO A NAIL IN THE SIDE



I, James L. Will, R.L.S. #1410
 (Type or print name) certify that the corner location shown on this record was determined by me or under my direction and control and that this U.S. Public Land Survey Monument Record is correct and complete to the best of my knowledge and belief.

James L. Will
 Signature

December 20, 1989
 Date