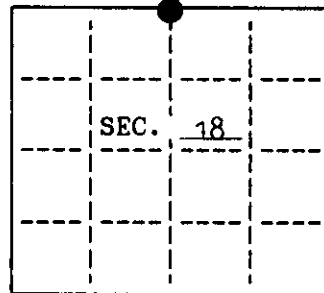


U.S. PUBLIC LAND SURVEY MONUMENT RECORD

Note: This form is intended and designed to fulfill all requirements of Wisconsin Administrative Code, Chapter A-8 7.08 U.S. Public Land Survey Monument Record (3)(a)(b)(c)(d)(e)(f)(g)(h)(i). An additional sheet may be added if necessary to conform with said requirements.

(a) CORNER LOCATION: State Plane Coordinates
 North 1/4 corner of Sec. 18 X Not available
 Township 39 North Y Not available
 Range 11 East Datum Base _____
 Town/City Three Lakes County of Oneida



(b) HISTORY OF ORIGINAL CORNER ESTABLISHMENT
 Original Surveyor: William E. Daugherty Original B.T.'S
 Date of Survey: Commenced Sept. 6, 1859 18" W. Pine S 10° W 350 lks.
 10" Y. Pine N 74° E 410 lks.
 Completed Sept. 10, 1859

(b)(f)(g)(h) Description of monument found at this corner and if it was accepted, state all evidence (material, testimonial, occupational, plats, records, other monuments) used as a basis for accepting. If not accepted or if nothing was found, state evidence used as basis for establishing location. If reestablished through lost corner proportionate methods, indicate all monuments, distances and directions used to establish. Indicate type of monument and sign post found or set.

Sept. 1963: Robert E. Bandow used an iron pipe in an east-west road for the corner & the following reference- Telephone pole S 60°-30' E 80.10'

March 10, 1992: I, James L. Will, found a 1" iron pipe in the town road 4.5' north of centerline used by Robert Bandow. Telephone pole is gone.

Made the following bearing trees measured to a nail in the side:

- 8" Double N. Pine N 30° W 57.40'
- 9" N. Pine North 34.60'
- 10" N. Pine N 17° E 34.68'
- 9" N. Pine N 56° E 52.20'

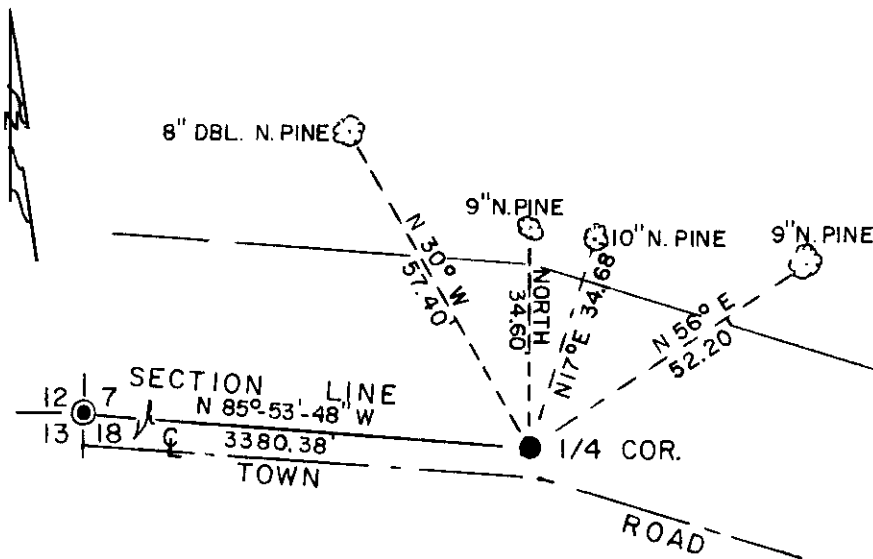
Set a plastic sign marker 20' north of the corner.

(c)(d)(e) Plan view of corner with ties to at least 4 witness monuments. If in disagreement with previously established corner, show the distances between the two corners and also indicate the ties to the disputed.

— LEGEND —

SCALE: 1" = 30'

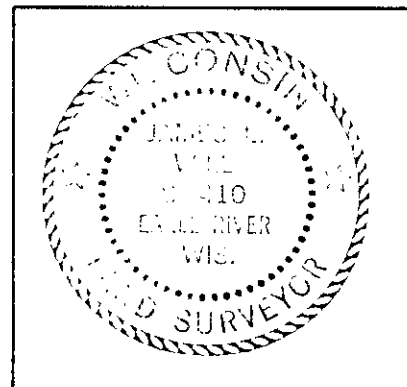
- IRON PIPE BRASS CAP IN PLACE
- 1" IRON PIPE IN PLACE
- ⊗ BEARING TREE MEASURED TO A NAIL IN THE SIDE



(i) I, James L. Will, R.L.S. #1410
 hereby certify that the corner location on this record was determined by me or under my direction and control and that this U.S. Public Land Survey Monument Record is correct and complete to the best of my knowledge and belief.

James L. Will
 Signature

March 17, 1992
 Date



INDEX NO. J-3