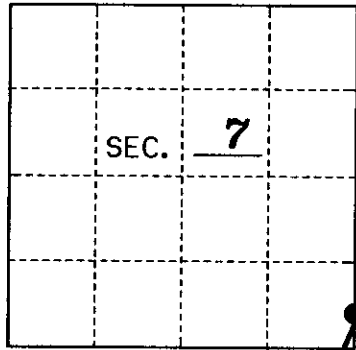


U.S. PUBLIC LAND SURVEY MONUMENT RECORD

Note: This form is intended and designed to fulfill all requirements of Wisconsin Administrative Code, Chapter A-E 7.08 U.S. Public Land Monument Record (3)(a)(b)(c)(d)(e)(f)(g)(h)(i). An additional sheet may be added if necessary to conform with said requirements. Deeds Square

(a) CORNER LOCATION: East Line
North Meander Corner of Section _____
 Township 39 North, Range 11 East
 Township/City Three Lakes
 County of Oneida



REGISTER OF DEEDS OFFICE
 ONEIDA COUNTY
 FILED

 MAR 07 2017

 AT _____ O'CLOCK _____ M
 KYLE J. FRANSON
 REGISTER OF DEEDS

(b) HISTORY OF ORIGINAL ESTABLISHMENT
 Original Surveyor: William E. Daugherty
 Date of Survey: September 1859
 Original B.T.'s: *The Original notes state that they ran North between Sections 17 and 18 and set the Section Corner/MC, so therefore no Original MC was set to the North at this position.*

County or State Plane Coordinates
 Northing _____
 Easting _____
 Datum Base _____

(b)(f)(g)(h) Description of monument found at this corner and if it was accepted, state all evidence (material, testimonial, occupational, plats, records, other monuments) used as a basis for accepting. If not accepted or if nothing was found, state evidence used as basis for establishing location. If reestablished through lost corner proportionate methods, indicate all monuments, distances and directions used to establish. Indicate type of monument and sign post found or set.

March 1, 1947: A.J. Lytle notes state that he ran South on the West line of Section 8 and at 89.51 chains to iron pipe with brass cap on the Westerly shore of Long Lake. He continues South and at 92.36 found the Section corner to fall in the Lake.

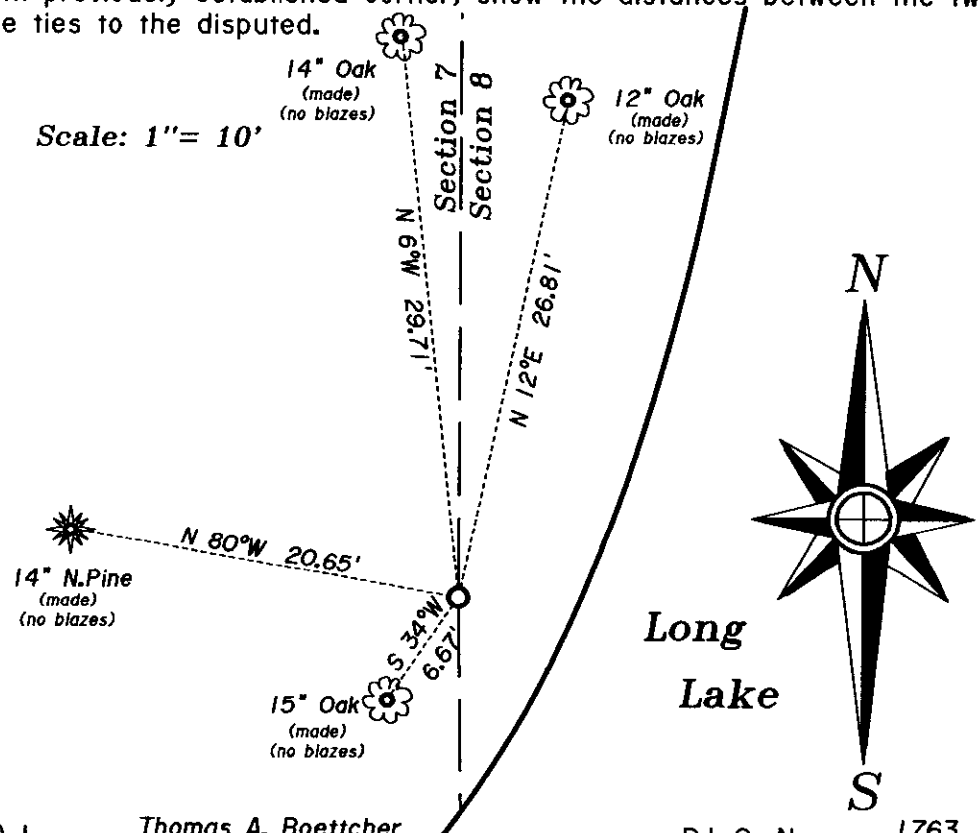
12/5/1962: Robert E. Badow of Gensot Engineering Co. found and used Lytle's brass cap for his survey on Long Lake. See Oneida County Surveyor file No. B7143.

12/29/1976: Robert E. Badow of Genisot & Assoc. again found and used Lytle's brass cap. See Oneida County Surveyor file No. B630.

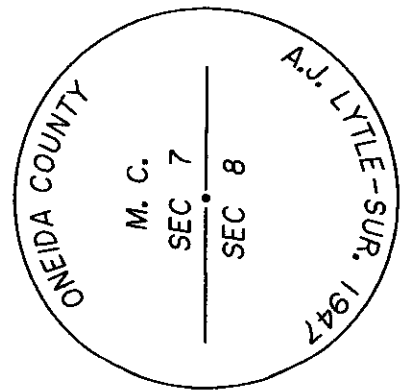
June 6, 2016: Thomas A. Boettcher of Eagle Landmark Surveying, Inc. found Lytle's 2" brass capped iron pipe 6 feet from the Shore of Long Lake 10" high and firm. We did not find any existing BT's so we made four new BT's as shown below and set a plastic guard post 0.7' North of the corner.

June 14, 2016. We also recorded Certified Survey Map No. 4465 which shows this Lytle brass capped meander corner and also ties to the quarter corner between Sections 7 and 8 showing the Section line between Sections 7 and 8.

(c)(d)(e) Plan view of the corner with ties to at least 4 witness monuments. If in disagreement with previously established corner, show the distances between the two corners and also indicate the ties to the disputed.



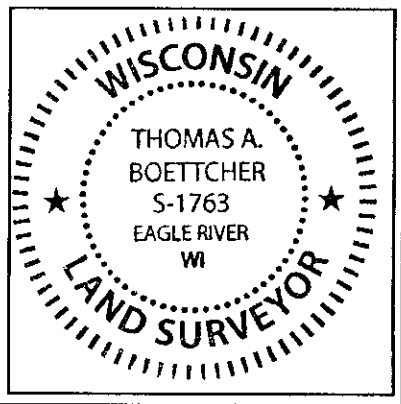
NOTE: Bearing trees are measured to a nail in the side.



(i) I, Thomas A. Boettcher R.L.S. No. 1763

hereby certify that the corner location on this record was determined by me or under my direction and control and that this U.S. Public Land Survey Monument Record is correct and complete to the best of my knowledge and belief.

Signature *Thomas A. Boettcher* Date March 1, 2017



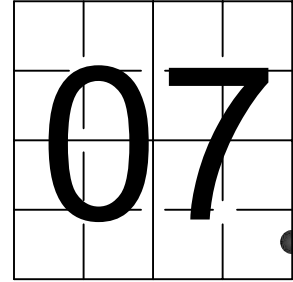
Index No. 3911070200 H-5 5

U S PUBLIC LAND SURVEY MONUMENT RECORD

NOTE: This form is intended and designed to fulfill all requirements of Wisconsin Administrative Code, Chapter A-E 7.08 U.S. Public Land Survey Monument Record (3) (a-i)

A-E 7.08(3)(a) Identity of corner:
MEANDER CORNER EAST LINE OF
SECTION 07, TOWNSHIP 39 NORTH,
RANGE 11 EAST OF THE 4TH PM,
TOWN OF THREE LAKES,
COUNTY OF ONEIDA

WISCRS - ONEIDA COUNTY
N: 249,107.629 USft (XXX,XXX.XXX)
E: 329,829.268 USft (XXX,XXX.XXX)
Datum: NAD83 (2011)
GNSS Method RTK
GNSS Control WISCORS VRS



The coordinate value shown has been verified by the average of two or more GPS observations at a markedly different time. Coordinates shown in parenthesis are previously published values.

A-E 7.08(3)(b)

Original Surveyor: William E. Daugherty - September 6 - September 10 1859

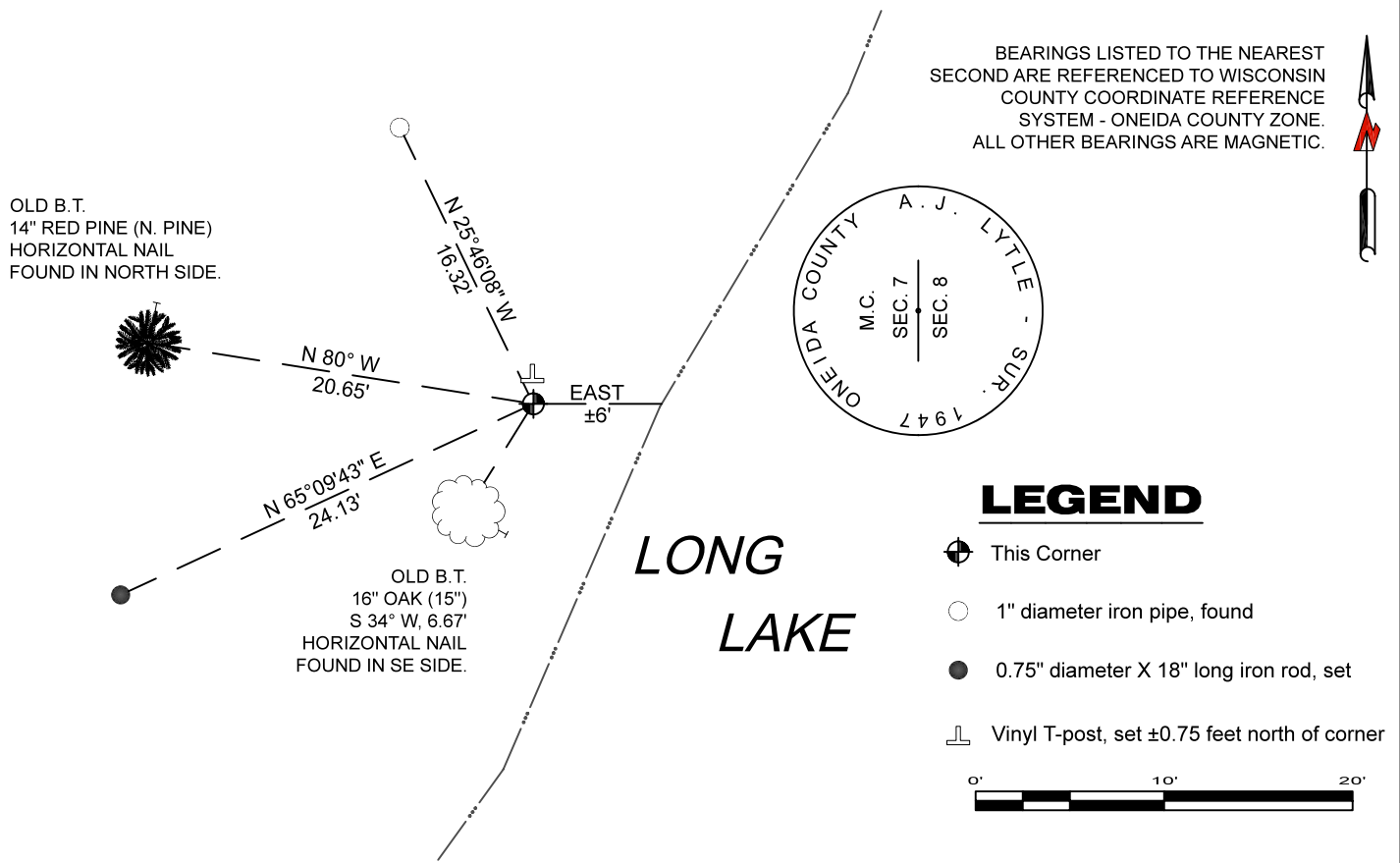
Original Accessories:

NONE REPORTED IN SURVEY NOTES

See previous U.S.Public Land Survey Monument Record - H-J 5 - March 1, 2017 - Surveyor 1763 - Thomas A. Boettcher - THENCE:

October 23, 2023 - I found a 2" diameter iron pipe with a 2" diameter brass cap stamped to identify the corner location. The monument extends ±10" above grade, and it's stamp is oriented 90° to north, as shown. I also found 2 of Boettcher's bearing trees alive and in good condition, and established 2 new reference monuments as shown below.

A-E 7.08(3)(c)(d) Plan view of corner with references to at least 4 witness monuments.

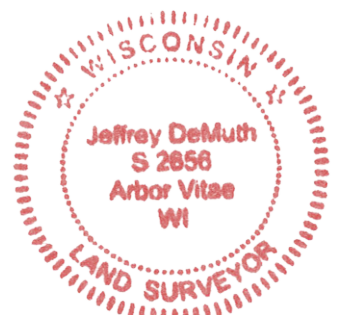


A-E 7.08(3)(e) 2017 Surveyor found a 2" brass capped iron pipe. I found the same in 2023.

A-E 7.08(3)(f) I accept this monument as a FOUND PERPETUATED LOCATION of the corner.

A-E 7.08(3)(g)(h) This corner was not determined through lost-corner-proportionate methods.

A-E 7.08(3)(i) I, Jeffrey L. DeMuth, Professional Land Surveyor No. S-2656, hereby certify that the corner location on this record was determined by me or under my direction and control, and that this U.S. Public Land Survey Monument Record is correct and complete to the best of my knowledge, and belief.



Jeffrey L. DeMuth
SIGNATURE

October 30, 2023

DATE

43911070200