

State of Wisconsin

County of Oneida } ss.

I James L. Will, do hereby certify that on the 25th day of October, 1920, I found evidence of the West one-quarter corner of Section 8 Township 33 North, Range 11 East, Fourth Principal Meridian, as described hereon; and that from this evidence I established a new monument and accessories as described hereon to perpetuate the original location of this corner.

Resident witnesses:

Michael J. Meyer

U. S. Public Land Survey Monument Record

Index No. G.S.

History of original corner establishment:

Original corner was established during the course of the subdivision of T 36N, R 11 E, from was started Sept. 6, 1859 and completed Sept. 10, 1859, by Wm. D. Doughterty, Dep. Surveyor. Original D.T.'s: 6" Maple N 63° W 146 Lks. 18" Red Oak N 57° E 273 Lks. 1947: A.J. Lytle, iron stake 5" below surface of road. set witness corner with pipe brass cap 50 Lks. west

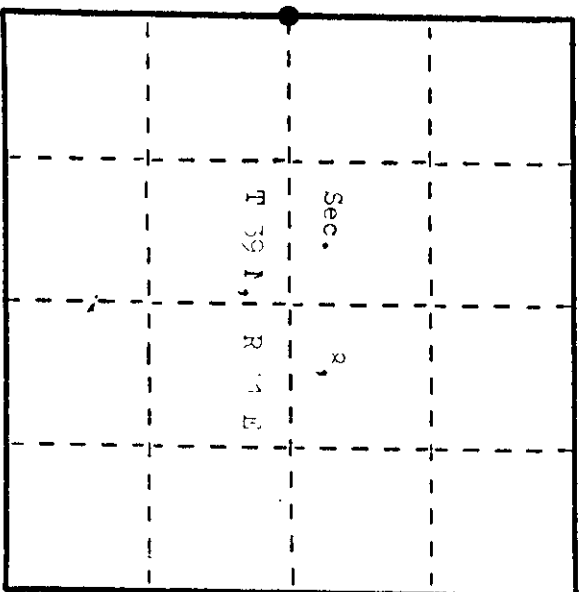
Description of corner evidence found:

Found a railroad spike 6' east of the centerline of the road. Found Lytle's witness corner 37' west. Found possible bearing tree removed to a pile on the side of the tree: 27" W. Pine S 75° W 40.09'

Description of monument and accessories I established to perpetuate the original location of this corner.

Under the following new bearing trees measured to a nail in the side of the trees:

- 7" Oak S 80° E 27.01'
- 17" Oak S 43° W 35.37'
- 8" Oak S 40° W 50.50'



● = Corner monument restored.

Dated at Appleton, Wis., this 22nd day of November, 1920

Signature James L. Will Title Registered Land Surveyor Registration No. 9-1412
(County Surveyor, Registered Land Surveyor, or other duly authorized official)

Office of Register of Deeds, County of Oneida, I hereby certify that the within instrument was filed in this office for record on the 22nd day of November, 1920 at 10 o'clock A. M.

(Register of Deeds)

By Michael J. Meyer Deputy

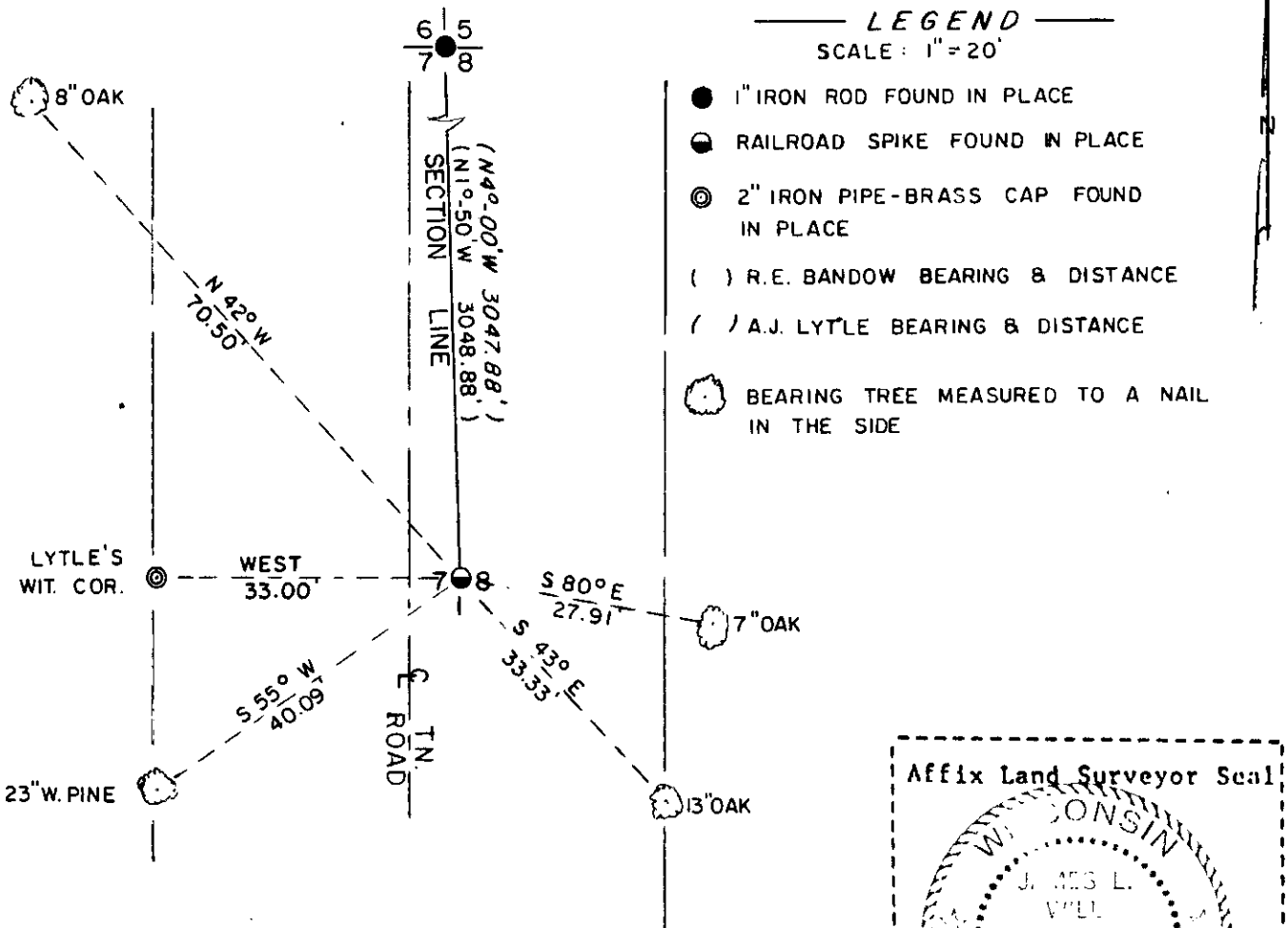
Describe any material discrepancy between the location of the corner as restored or reestablished and the location of that corner as previously restored or reestablished by distance and direction. Show the discrepancy on the plan view drawing under (d), above. Show the distances between the corner as previously restored or reestablished and (1) the corner as restored or reestablished, and (2) to at least 2 of the witness monuments shown on the drawing in (d), above.

None. See sketch below.

Was the corner restored through acceptance of (1) an obliterated evidence location, or, (2) a found perpetuated location?

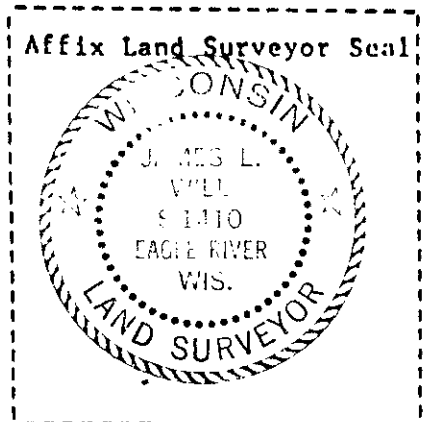
Corner was restored through acceptance of a found perpetuated location.

Was the corner reestablished through lost corner proportionate methods? If so, show the method, including the directions and distances to other public land survey corners used as evidence or used for proportioning in determining the corner location?



LEGEND
SCALE: 1"=20'

- 1" IRON ROD FOUND IN PLACE
- ⊙ RAILROAD SPIKE FOUND IN PLACE
- ⊙ 2" IRON PIPE-BRASS CAP FOUND IN PLACE
- () R.E. BANDOW BEARING & DISTANCE
- (/) A.J. LYTLE BEARING & DISTANCE
- 🌳 BEARING TREE MEASURED TO A NAIL IN THE SIDE



I, James L. Will, R.L.S. #1410
(type or print name) certify that the corner location shown on this record was determined by me or under my direction and control and that this U.S. Public Land Survey Monument Record is correct and complete to the best of my knowledge and belief.

James L. Will
Signature

Nov. 22, 1984
Date