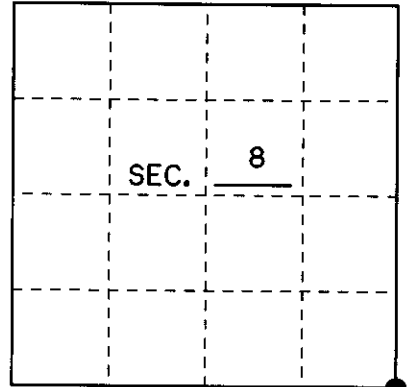


U.S. PUBLIC LAND SURVEY MONUMENT RECORD

Note: This form is intended and designed to fulfill all requirements of Wisconsin Administrative Code, Chapter A-E 7.08 U.S. Public Land Monument Record (3)(a)(b)(c)(d)(e)(f)(g)(h)(i). An additional sheet may be added if necessary to conform with said requirements.

(a) CORNER LOCATION: South Line County or State Plane Coordinates
Section 8 Corner of Section 8 Northing N/A
 Township 39 North Easting N/A
 Range 11 East Datum Base N/A
 Township/City Three Lakes County of Oneida



(b) HISTORY OF ORIGINAL CORNER ESTABLISHMENT Original B.T.'s
 Original Surveyor: William E. Daugherty Cedar 7" N 23°E 18lks
 Date of Survey: September 1809 Birch 9" S 60°W 29lks

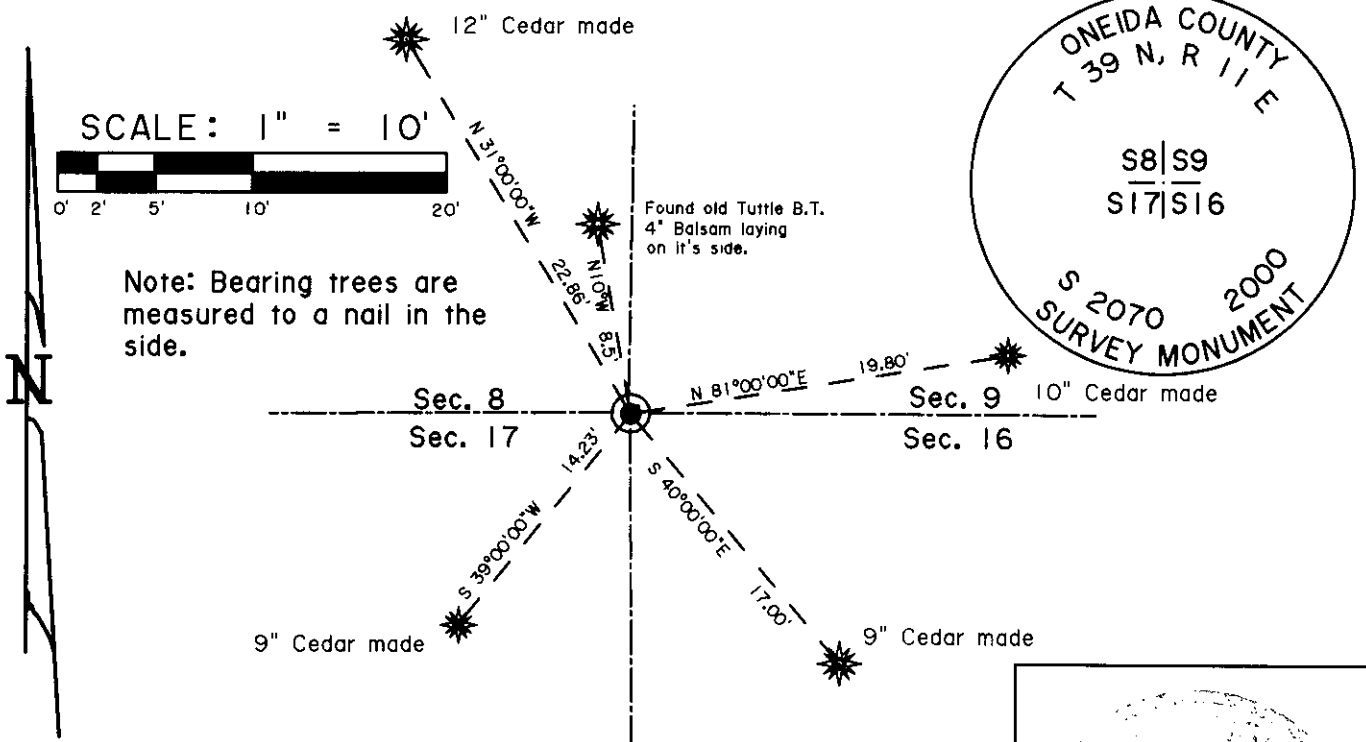
(b)(f)(g)(h) Description of monument found at this corner and if it was accepted, state all evidence (material, testimonial, occupational, plats, records, other monuments) used as a basis for accepting. If not accepted or if nothing was found, state evidence used as basis for establishing location. If reestablished through lost corner proportionate methods, indicate all monuments, distances and directions used to establish. Indicate type of monument and sign post found or set.

September 1809: William E. Daugherty Set original section post between sections 8,9,16,17.

June 1964: H.S. Tuttle accepted a iron pipe and found one original B.T. (Cedar 12" N82°W 9.8) and made the following new bearing trees. Balsam 4" N10°W 8.5' Balsam 4" N18°E 11.3'

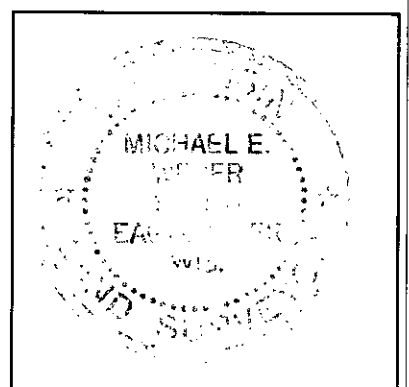
2/28/00 I, Micheal E. Weber found a 1" iron pipe and replaced it with a 2"x 36" Oneida County aluminum monument with an magnetic capped stamped to identify the corner as shown below. I also found one of H.S. Tuttle's bearing trees laying on its side 8.5' from said iron pipe. I also made the following bearing trees listed below and set a plastic sign post 1' south of monument.

(c)(d)(e) Plan view of the corner with ties to at least 4 witness monuments. If in disagreement with previously established corner, show the distances between the two corners and also indicate the ties to the disputed.



(i) I, Michael E. Weber R.L.S. No. 2070
 hereby certify that the corner location on this record was determined by me or under my direction and control and that this U.S. Public Land Survey Monument Record is correct and complete to the best of my knowledge and belief.

Signature Michael E Weber Date 2/28/00



3914080000

Index No. J-9