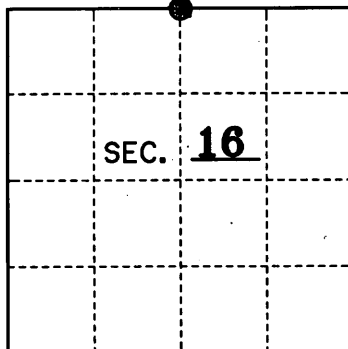


# U.S. PUBLIC LAND SURVEY MONUMENT RECORD

Note: This form is intended and designed to fulfill all requirements of Wisconsin Administrative Code, Chapter A-E 7.08 U.S. Public Land Monument Record (3)(a)(b)(c)(d)(e)(f)(g)(h)(i). An additional sheet may be added if necessary to conform with said requirements. Deeds Square

**(a) CORNER LOCATION:**  
 North 1/4 Corner of Section 16  
 Township 39 North, Range 11 East  
 Township/City Three Lakes  
 County of Oneida



REGISTER OF DEEDS OFFICE  
 ONEIDA COUNTY  
**FILED**  
 MAR 12 2012  
 AT \_\_\_\_\_ O'CLOCK \_\_\_\_\_ M  
**THOMAS H. LEIGHTON**  
 REGISTER OF DEEDS

**(b) HISTORY OF ORIGINAL ESTABLISHMENT**  
 Original Surveyor: William E. Daugherty  
 Date of Survey: September 1859  
 Original B.T.'s:

8" Birch N 60°E 6 lks.  
 10" Birch S 21°W 24 lks.

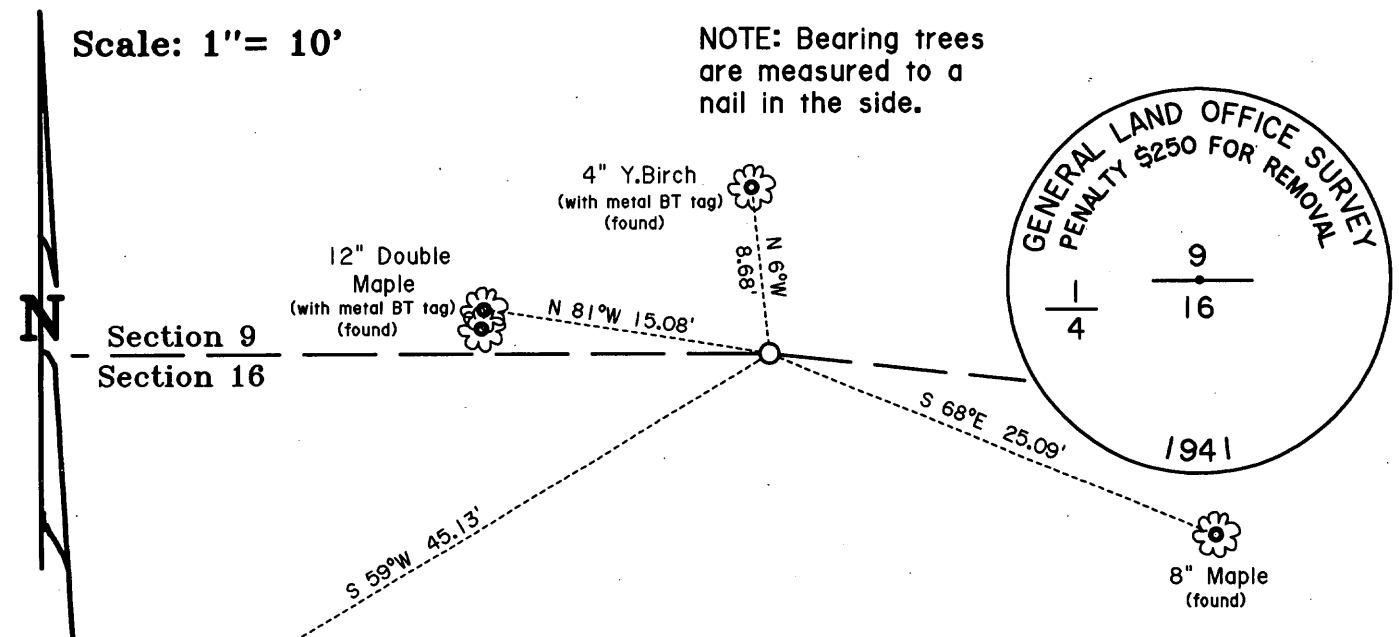
County or State Plane Coordinates  
 Northing \_\_\_\_\_  
 Easting \_\_\_\_\_  
 Datum Base \_\_\_\_\_

**(b)(f)(g)(h) Description of monument found at this corner and if it was accepted, state all evidence (material, testimonial, occupational, plats, records, other monuments) used as a basis for accepting. If not accepted or if nothing was found, state evidence used as basis for establishing location. If reestablished through lost corner proportionate methods, indicate all monuments, distances and directions used to establish. Indicate type of monument and sign post found or set.**

June 2 to October 18, 1941: Hugh B. Crawford, cadastral surveyor for the General Land Office in a dependent resurvey of the East 1/2 of T 39 N, R 11 E, measures N 83°34'W 38.98 chains and found the remains of the original BT's, one a stump and cut log with blaze and the other OK with an old blaze. He set a 6" x 24" long concrete monument with an 1" iron post and brass cap embedded therein for the 1/4 corner. He made new BT's: 6" Maple N 42-1/4°W 56 lks. and 7" Maple S 6-1/2°E 45 lks.

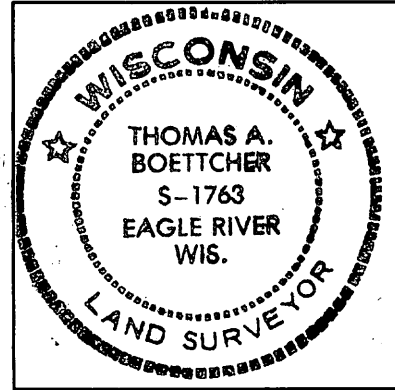
February 1, 1012: I, Thomas A. Boettcher, found the above described GLO 6" diameter concrete monument with a brass cap stamped as shown below flush with the ground and in good condition. In our survey in Section 16 we measured to the Northeast section corner and check with the GLO distance within one foot and GLO angle from the East section line check within about one minute. This position checks well with the GLO survey. We found four existing BT's as shown below, two with metal BT tags. We also found a metal sign post 3' southwest of the corner. We set a plastic sign post 0.8' North of the corner. We did not find the GLO 1941 BT's since this area has been logged years ago.

**(c)(d)(e) Plan view of the corner with ties to at least 4 witness monuments. If in disagreement with previously established corner, show the distances between the two corners and also indicate the ties to the disputed.**



(i) I, Thomas A. Boettcher R.L.S. No. 1763  
 hereby certify that the corner location on this record was determined by me or under my direction and control and that this U.S. Public Land Survey Monument Record is correct and complete to the best of my knowledge and belief.

Signature *Thomas A. Boettcher* Date February 22, 2012



Index No. 3911090020