

Stock No. 26273

U.S. PUBLIC LAND SURVEY MONUMENT RECORD

Index No. 6-13

State of Wisconsin

County of Oneida } ss.

I, Kip W. Soder, do hereby certify that on the 28th day of March, 1989, I found evidence of the West one-quarter corner of Section 10, Township 39 North, Range 11 East, Fourth Principal Meridian, as described hereon; and that from this evidence I established a new monument and accessories as described hereon to perpetuate the original location of this corner.

Resident witnesses:

Robert Conquest

History of original corner establishment:

Original Government Survey in 1859 by William E. Daugherty.

A dependent resurvey by the General Land Office in 1941. By proportionate measure set an iron post, 3' long, 2" dia., with a brass cap marked; 1/4, S9, S10, 1941. Blazed and scribed the following B.T.'s; N. Pine 10" S 57° E 363 1/2 lks. W. Pine 12" S 22° 40' W 315 lks.

Description of corner evidence found:

Found monument as described and in place, from which the following bear;

W. Pine 14" S 27° W 207.37 feet. (315 lks.)

() G.L.O. dist.

Description of monument and accessories I established to perpetuate the original location of this corner.

Blazed and scribed the following bearing trees;

Spruce 4" N 45° E 95.94 feet.
Spruce 7" S 41° E 114.65 feet
Spruce 3" N 71° W 98.54 feet.

Set steel sign post 0.75' Northwest of corner.

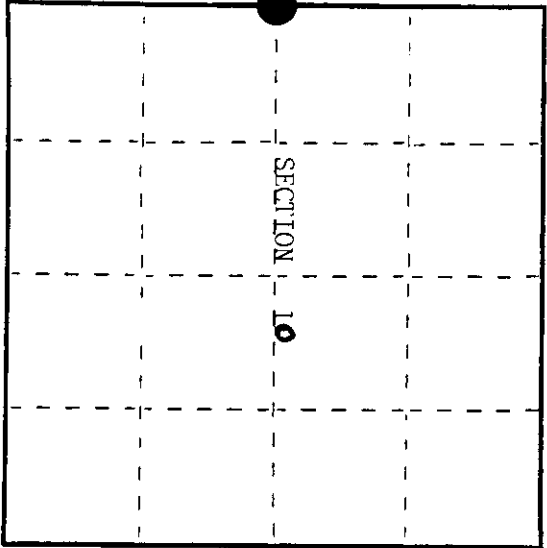
Dated at Three Lakes, Wis. this 8th day of May, 1989

Signature: Kip W. Soder Title: Land Surveyor Registration No. S-1731
(County Surveyor, Registered Land Surveyor, or other duly authorized official)

Office of Register of Deeds, County of Oneida, I hereby certify that the within instrument was filed in this office for record on the 19th day of May, 1989 at 10 o'clock A.M.

(Register of Deeds)

By: Deputy

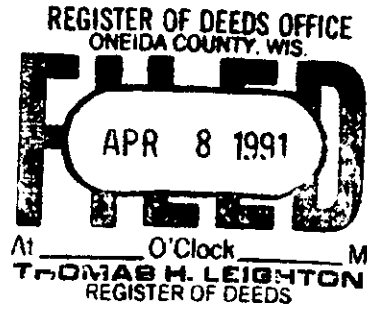


● = Corner monument restored.

3911092000

d) Describe any material discrepancy between the location of the corner as restored or reestablished and the location of that corner as previously restored or reestablished by distance and direction. Show the discrepancy on the plan view drawing under (d), above. Show the distances between the corner as previously restored or reestablished and (1) the corner as restored or reestablished, and (2) to at least 2 of the witness monuments shown on the drawing in (d), above.

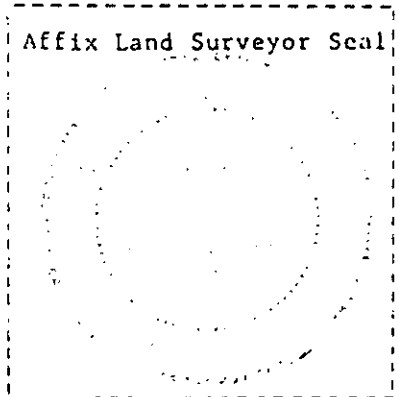
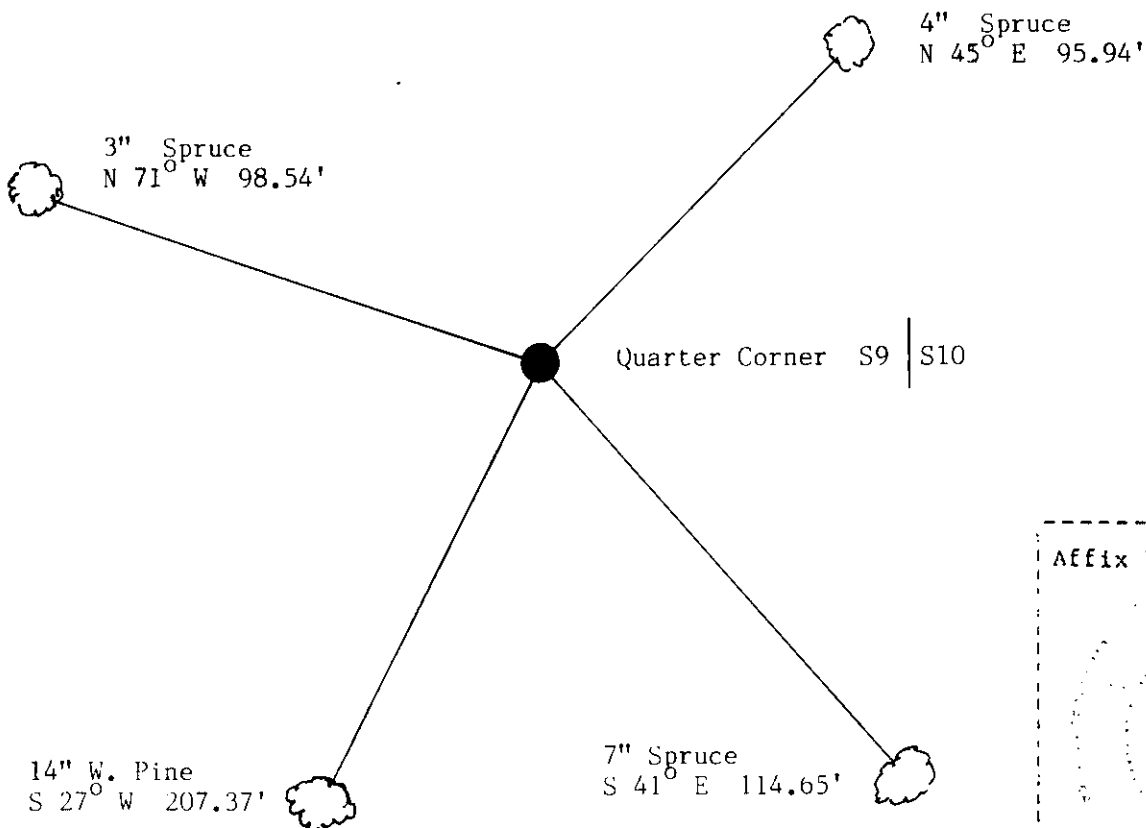
See drawing below.



(f) Was the corner restored through acceptance of (1) an obliterated evidence location, or, (2) a found perpetuated location?

Restored through acceptance of a found perpetuated location.

(g&h) Was the corner reestablished through lost corner proportionate methods? If so, show the method, including the directions and distances to other public land survey corners used as evidence or used for proportioning in determining the corner location?



(i) I, Kip W. Soder (type or print name) certify that the corner location shown on this record was determined by me or under my direction and control and that this U.S. Public Land Survey Monument Record is correct and complete to the best of my knowledge and belief.

Kip W. Soder May 8, 1989
 Signature Date

Survey requested by: James Hank 1/5 1990
 District Ranger Date