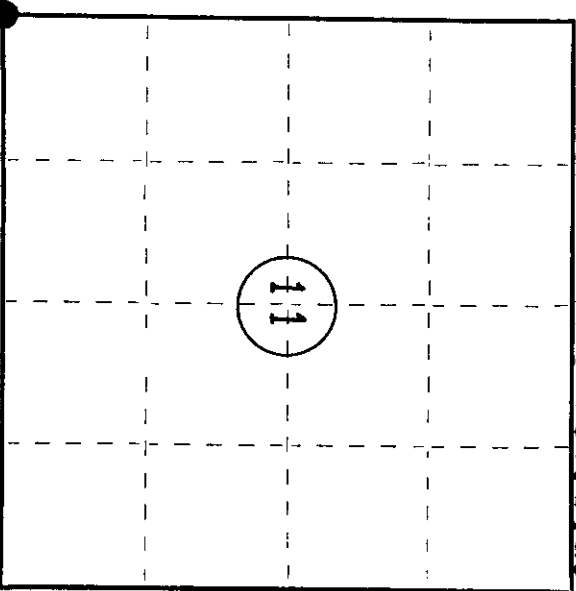


State of Wisconsin }  
County of Oneida } ss.

I Stephen J. Favorite, do hereby certify that on the 15th day of October, 1982, I found evidence of the Southwest corner of Section 11 Township 39 North, Range 11 East, Fourth Principal Meridian, as described hereon; and that from this evidence I established a ~~new~~ monument and accessories as described hereon to perpetuate the original location of this corner.

Resident witnesses:  
John C. Favorite

*Compared with the record accepted as correct. Plot of Stephen J. Favorite Oneida County Surveyor 1982*



● = Corner monument restored.

CERTIFIED LAND CORNER RESTORATION  
(U.S. PUBLIC LAND SURVEY MONUMENT RECORD)

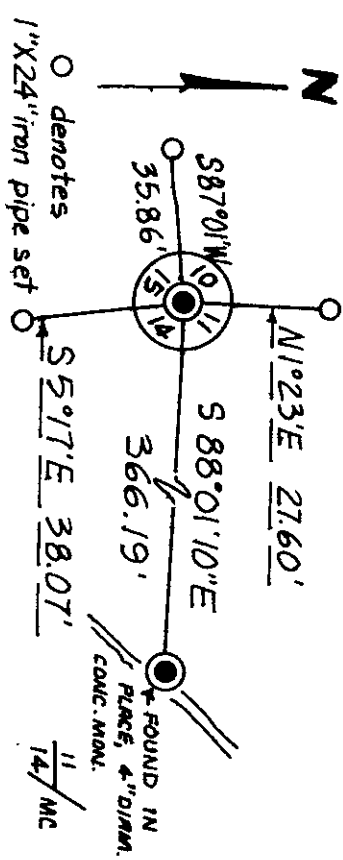
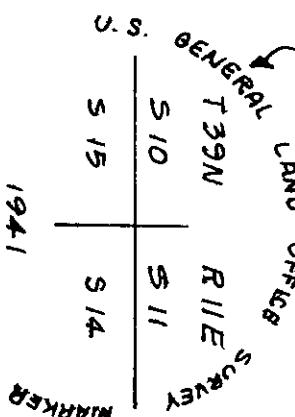
Index No. J-17

The original corner was established in the course of the subdivision of Township 39 North, Range 11 East, surveyed in 1859 by William E. Daugherty, County Surveyor.

Description of corner evidence found:  
Found 6" diam. round conc. tron.  
with brass cap stamped as  
shown below:

Witness trees found:  
10" W. Pine stump 5.58°W 29.4'  
16" W. Pine stump 5.40°W 5.0'

Evidence based on a 1941 G.L.O. dependent resurvey of E 1/2 of T 39N, R 11E.



Description of monument and accessories I established to perpetuate the original location of this corner.

Dated at St. Germain, Wis., this 15th day of October, 1982.

Signature Stephen J. Favorite Title Registered Land Surveyor Registration No. S-1616  
(County Surveyor, Registered Land Surveyor, or other duly authorized official)  
Office of Register of Deeds, County of Oneida  
I hereby certify that the within instrument was filed in this office for record on the 14th day of December, 1982 at 2:30 o'clock P. M.

Dennis George Fuchs  
(Register of Deeds)

By \_\_\_\_\_ Deputy

3911100000

Stock No. 26273

U.S. PUBLIC LAND SURVEY MONUMENT RECORD

Index No. J 17

State of Wisconsin

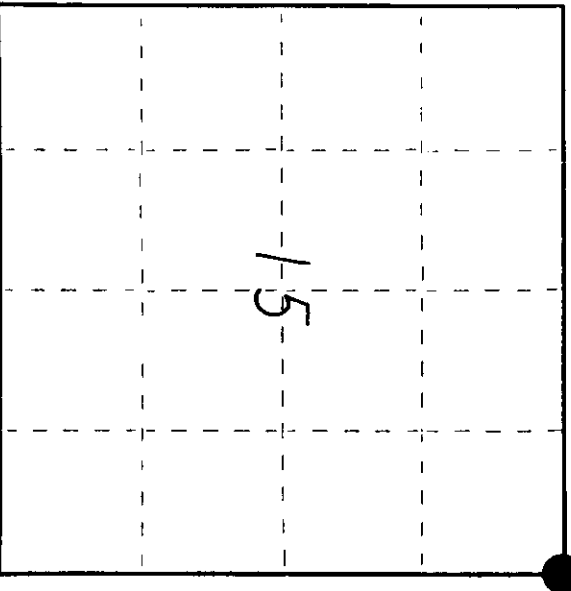
County of Oneida

ss.

I John H. Fisher, do hereby certify that on the 2 day of May 1984, I found evidence of the Section corner of 10, 11, 14 and 15 Township 39 North, Range 11 East, Fourth Principal Meridian, as described hereon; and that from this evidence I established a new monument and accessories as described hereon to perpetuate the original location of this corner.

Resident witnesses:

NONE



○ = Corner monument restored.

History of original corner establishment: Original survey in 1859 by William E. Daugherty, Dependent Resurvey in 1941 by Hugh B. Crawford; at 40.94 chains set a concrete monument 24 inches long, 6 inches in diameter, 18 inches in the ground, with an iron post 23 inches long, 1 inch in diameter embedded in center, with brass tablet stamped:

T 39N R 11E  
S 10 S 11  
S 15 S 14  
1941

From which the following bear:  
Local bearing tree: White Pine

White Pine	9"	N32-1/4°E	58 lks
White Pine	16"	S22°E	49 lks
White Pine	10"	S58-1/2°W	45 lks

Description of corner evidence found:

B.L.M. Monument as described and in place; and the following bearing trees:

White Pine (read)	S64°W	29.3 feet
-------------------	-------	-----------

Description of monument and accessories I established to perpetuate the original location of this corner.  
Corner in good condition:  
Blazed and scribed the following bearing trees:  
Set nail in:

Red Pine	6"	S44°W	29.72 feet
Red Pine	10"	S87°W	28.7 feet
Red Maple	8"	N62°W	11.4 feet
White Pine	9"	N23°E	27.1 feet
Set steel sign post	East		1.2 feet

Dated at Minocqua, Wis., this 11th day of February, 1985

Signature: *John H. Fisher* Title: Registered Land Surveyor Registration No. S-836  
(County Surveyor, Registered Land Surveyor, or other duly authorized official)

Office of Register of Deeds, County of Oneida  
Instrument was filed in this office for record on the 14th day of February, 1985 at 4:15 o'clock P.M.

*Doris George Tucker*  
(Register of Deeds)

By: \_\_\_\_\_ Deputy

391110000

