

Stock No. 26273

State of Wisconsin

U.S. PUBLIC LAND SURVEY MONUMENT RECORD

Index No. 1 15

County of Oneida } ss.

I, John H. Fisher, do hereby certify that on the 2 day of May 19 84, I found evidence of the One quarter corner of Sections 10 and 15 Township 39 North, Range 11 East, Fourth Principal Meridian, as described hereon; and that from this evidence I established a new monument and accessories as described hereon to perpetuate the original location of this corner.

Resident witnesses: None

History of original corner establishment: Original survey in 1859 by William E. Daugherty. Dependent Resurvey in 1941; by Hugh B. Crawford; at 38.83-1/2 chains set a concrete monument, 24 inches long, 6 inches in diameter, 20 inches in the ground, with an iron post 23 inches in diameter, embedded in center, with brass tablet stamped: From which the following bear:

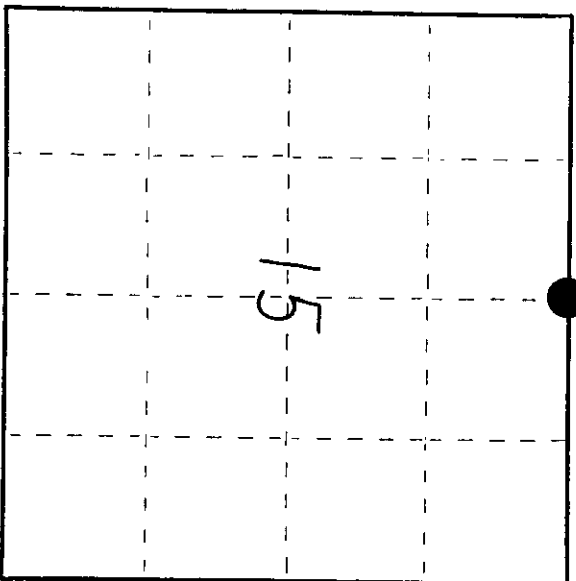
1/4 S 10	Maple	9"	N3-1/2°E	40 lks
S 15	Maple	12"	S67-1/2°E	39 lks
1941				

Description of corner evidence found: B.L.M. Monument as described and in place: and the following bearing trees:

Sugar Maple	11"	N4°E	26.2 feet
Sugar Maple	14"	S67°E	25.9 feet
Sugar Maple	10"	S 9°W	26.8 feet
Wood sign post		SE	1.0 foot

Description of monument and accessories I established to perpetuate the original location of this corner. Corner in good condition: Blazed and scribed the following new bearing tree Set nail in:

Sugar Maple	7"	N38°W	30.8 feet
-------------	----	-------	-----------



○ = Corner monument restored.

Dated at Minocqua, Wis., this 11th day of February, 1985

Signature: [Signature] Title: Registered Land Surveyor Registration No. S-836 (County Surveyor, Registered Land Surveyor or other duly authorized official)

Office of Register of Deeds, County of Oneida, at 415 o'clock M. I hereby certify that the within instrument was filed in this office for record on the 14th day of February, 1985

By: [Signature] (Register of Deeds)

By: Deputy

391110000

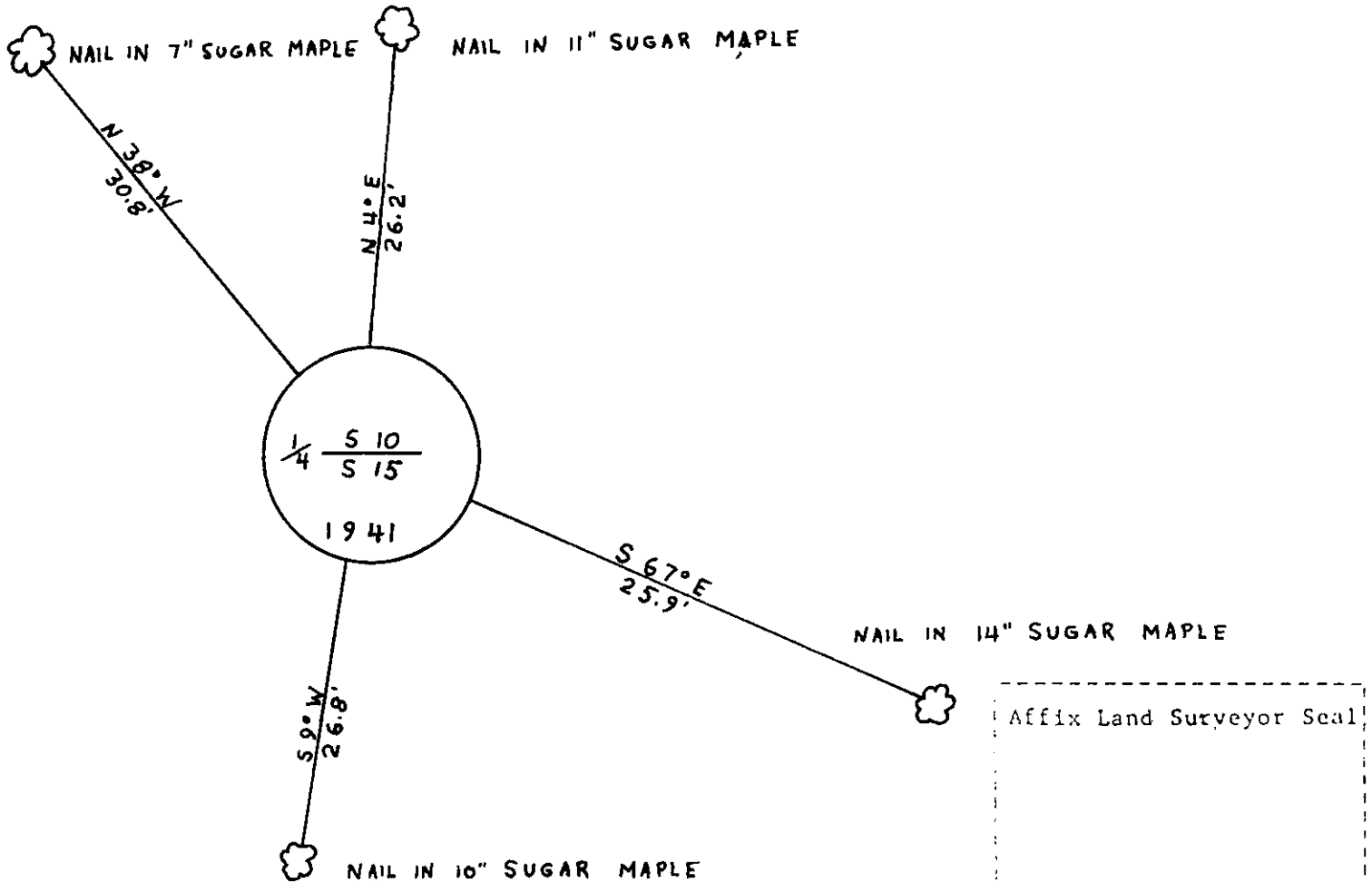
(e) Describe any material discrepancy between the location of the corner as restored or reestablished and the location of that corner as previously restored or reestablished by distance and direction. Show the discrepancy on the plan view drawing under (d), above. Show the distances between the corner as previously restored or reestablished and (1) the corner as restored or reestablished, and (2) to at least 2 of the witness monuments shown on the drawing in (d), above.

See drawing below

(f) Was the corner restored through acceptance of (1) an obliterated evidence location, or, (2) a found perpetuated location?

Found perpetuated location

(g&h) Was the corner reestablished through lost corner proportionate methods? If so, show the method, including the proportioning and distances to other public land survey corners used as evidence or used for proportioning in determining the corner location?



(i) I, John H. Fisher
 (type or print name; certify that the corner location shown on this record was determined by me or under my direction and control and that this U.S. Public Land Survey Monument Record is correct and complete to the best of my knowledge and belief.

Affix Land Surveyor Seal

John H. Fisher
 Signature

2/11/85
 Date