

Stock No. 26273

U.S. PUBLIC LAND SURVEY MONUMENT RECORD

Index No. J 19-20

State of Wisconsin

County of Oneida } ss.

I, John H. Fisher, do hereby certify that on the 28 day of August 1984, I found evidence of the meander corner corner of Sections 11 and 14 Township 39 North, Range 11 East, Fourth Principal Meridian, as described hereon; and that from this evidence I established a new monument and accessories as described hereon to perpetuate the original location of this corner.

Resident witnesses: None

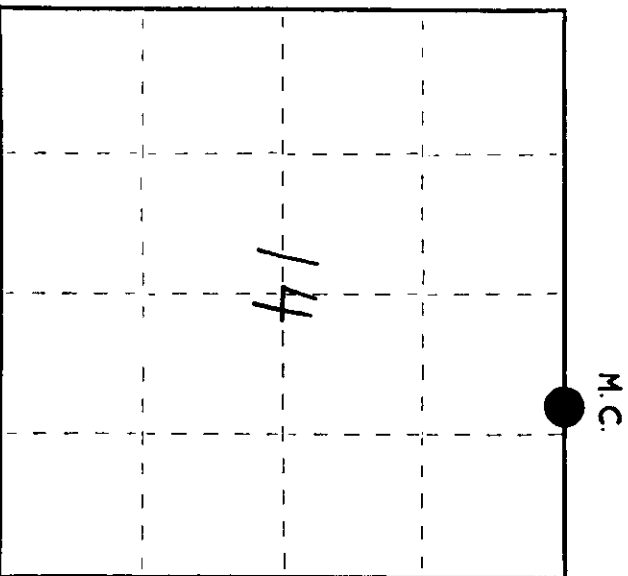
History of original corner establishment: Original survey in 1859 by William E. Daugherty. Dependent Resurvey in 1941 by Hugh B. Crawford at 23.72 chains set a concrete monument, 24 inches long, 6 inches diameter, 20 inches in the ground, with an iron post 23 inches long, 1 inch diameter, embedded in center with brass tablet stamped:

From which the following bear:
T 39 N Norway Pine 12" 155 lks
S 11 Norway Pine 7" 44 lks
S 14 Norway Pine 7" 44 lks
R 11 E
M.C. 1941

Description of corner evidence found:
B.L.M. monument as described and in place:

Description of monument and accessories I established to perpetuate the original location of this corner.
Corner in good condition:
Blazed and scribed the following new bearing trees:
Set Nail in:

Red Pine	16"	S35°E	14.8 feet
Red Pine	14"	S82°E	28.0 feet
Red Pine	13"	N39°E	52.2 feet
Red Pine	12"	N17°E	28.6 feet
Set steel sign post		S15°E	.6 feet



○ = Corner monument restored.

Dated at Minocqua, Wis., this 19th day of December, 1984.

Signature: [Handwritten Signature] Title: Registered Land Surveyor Registration No. S-836
(County Surveyor, Registered Land Surveyor, or other duly authorized official)

Office of Register of Deeds, County of Oneida. I hereby certify that the within instrument was filed in this office for record on the 14th day of February, 1985 at 4:15 o'clock P.M.

[Handwritten Signature] (Register of Deeds)

By: [Handwritten Signature] Deputy

3911110013

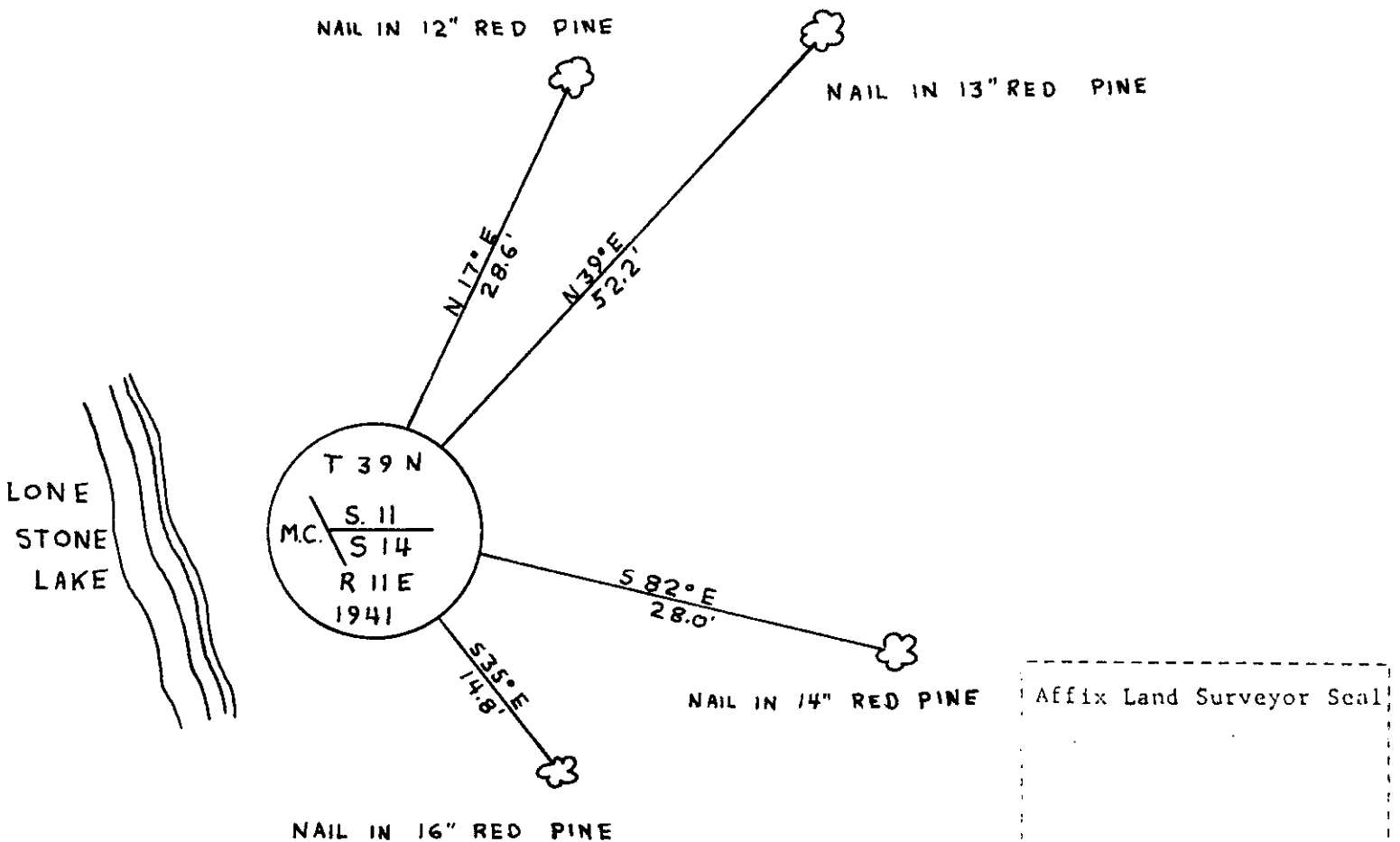
(e) Describe any material discrepancy between the location of the corner as restored or reestablished and the location of that corner as previously restored or reestablished by distance and direction. Show the discrepancy on the plan view drawing under (d), above. Show the distances between the corner as previously restored or reestablished and (1) the corner as restored or reestablished, and (2) to at least 2 of the witness monuments shown on the drawing in (d), above.

See drawing below

(f) Was the corner restored through acceptance of (1) an obliterated evidence location, or, (2) a found perpetuated location?

Found perpetuated location

(g&h) Was the corner reestablished through lost corner proportionate methods? If so, show the method, including the directions and distances to other public land survey corners used as evidence or used for proportioning in determining the corner location?



(i) I, John H. Fisher
 (type or print name) certify that the corner location shown on this record was determined by me or under my direction and control and that this U.S. Public Land Survey Monument Record is correct and complete to the best of my knowledge and belief.

John H. Fisher Signature 12/19/84 Date