

U.S. PUBLIC LAND SURVEY MONUMENT RECORD

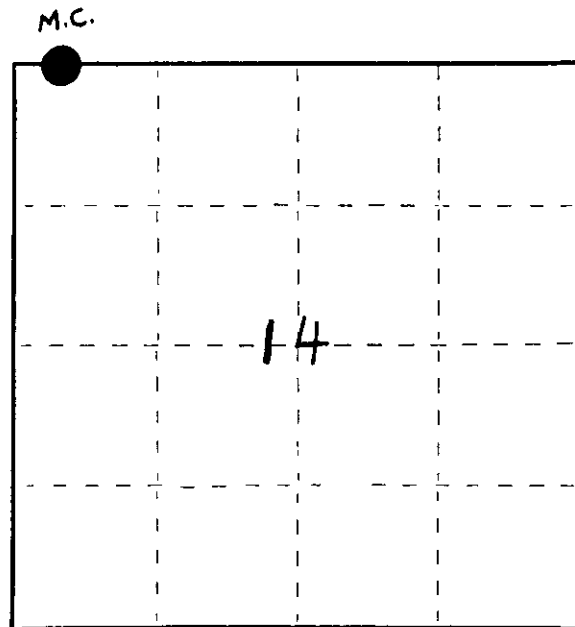
Index No. J 17-18

State of Wisconsin }  
 County of Oneida } ss.

I, John H. Fisher, do hereby certify that on the 28 day of August 19 84, I found evidence of the Meander Corner corner of Section 11 and 14 Township 39 North, Range 11 East, Fourth Principal Meridian, as described hereon; and that from this evidence I established a new monument and accessories as described hereon to perpetuate the original location of this corner.

Resident witnesses:

None



○ = Corner monument restored.

History of original corner establishment: Original survey in 1859 by William E. Daugherty Dependent Resurvey in 1941 by Hugh B. Crawford; at 52.75 chains set a concrete monument 21 inches long, 6 inches in diameter, 18 inches in the ground, with an iron post 23 inches long, 1 inch in diameter, embedded in center with a brass tablet stamped:

From which the following bear:

T 39 N	White Pine	14"	S28°W	19 lks
S 11 / M.C.	White Pine	14"	N64°W	22-1/2 lks
S 14 / R 11 E				
1941				

Description of corner evidence found:

B.I.M. Monument as described and in place; and the following bearing trees:

White Pine	16"	N60°W	14.02 feet
White Pine	22"	S35°W	11.68 feet

Description of monument and accessories I established to perpetuate the original location of this corner.

Corner in good condition:

Blazed and scribed the following new bearing trees:

Set nail in:

Red Maple	14"	N81°W	4.00 feet
White Pine	18"	N 5°W	31.25 feet
Set steel sign post		N10°W	1.5 feet

Dated at Minocqua, Wis., this 11<sup>th</sup> day of February, 1985.

Signature \_\_\_\_\_ Title Registered Land Surveyor Registration No. S-836  
 (County Surveyor, Registered Land Surveyor, or other duly authorized official)

Office of Register of Deeds, County of Oneida, I hereby certify that the within instrument was filed in this office for record on the 14<sup>th</sup> day of February, 1985 at 4:20 o'clock P. M.

*Loris Verage Kushn*  
 (Register of Deeds)

By \_\_\_\_\_ Deputy

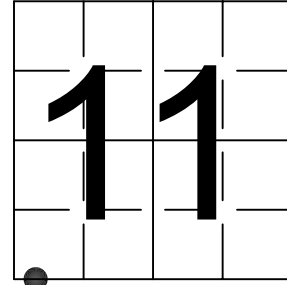


# U S PUBLIC LAND SURVEY MONUMENT RECORD

NOTE: This form is intended and designed to fulfill all requirements of Wisconsin Administrative Code, Chapter A-E 7.08 U.S. Public Land Survey Monument Record (3) (a-i)

A-E 7.08(3)(a) Identity of corner:  
MEANDER CORNER SOUTH LINE OF  
SECTION 11, TOWNSHIP 39 NORTH,  
RANGE 11 EAST OF THE 4TH PM,  
TOWN OF THREE LAKES,  
COUNTY OF ONEIDA

WISCORS - ONEIDA COUNTY  
N: 248,833.039 USft (XXX,XXX.XXX)  
E: 346,149.740 USft (XXX,XXX.XXX)  
Datum: NAD83 (2011)  
GNSS Method RTK  
GNSS Control WISCORS VRS



The coordinate value shown has been verified by the average of two or more GPS observations at a markedly different time. Coordinates shown in parenthesis are previously published values.

A-E 7.08(3)(b)

Original Surveyor: William E. Daugherty - September 6 - September 10 1859

Original Accessories:

Birch	8	N 25° W	10 Links
Birch	8	S 53° W	13 Links

See previous U.S.Public Land Survey Monument Record - J 17-18 - February 11, 1985 - Surveyor 836 - John H. Fisher - THENCE:

November 10, 1986 - Surveyor 1616 - Stephen J. Favorite - indicates this position as "6" round B C conc mon in place" on Oneida County Map #B1495.

September 29, 1993 - Surveyor 1616 - Stephen J. Favorite - indicates this position as "6" round B C conc mon in place" on Oneida County Map #B2829.

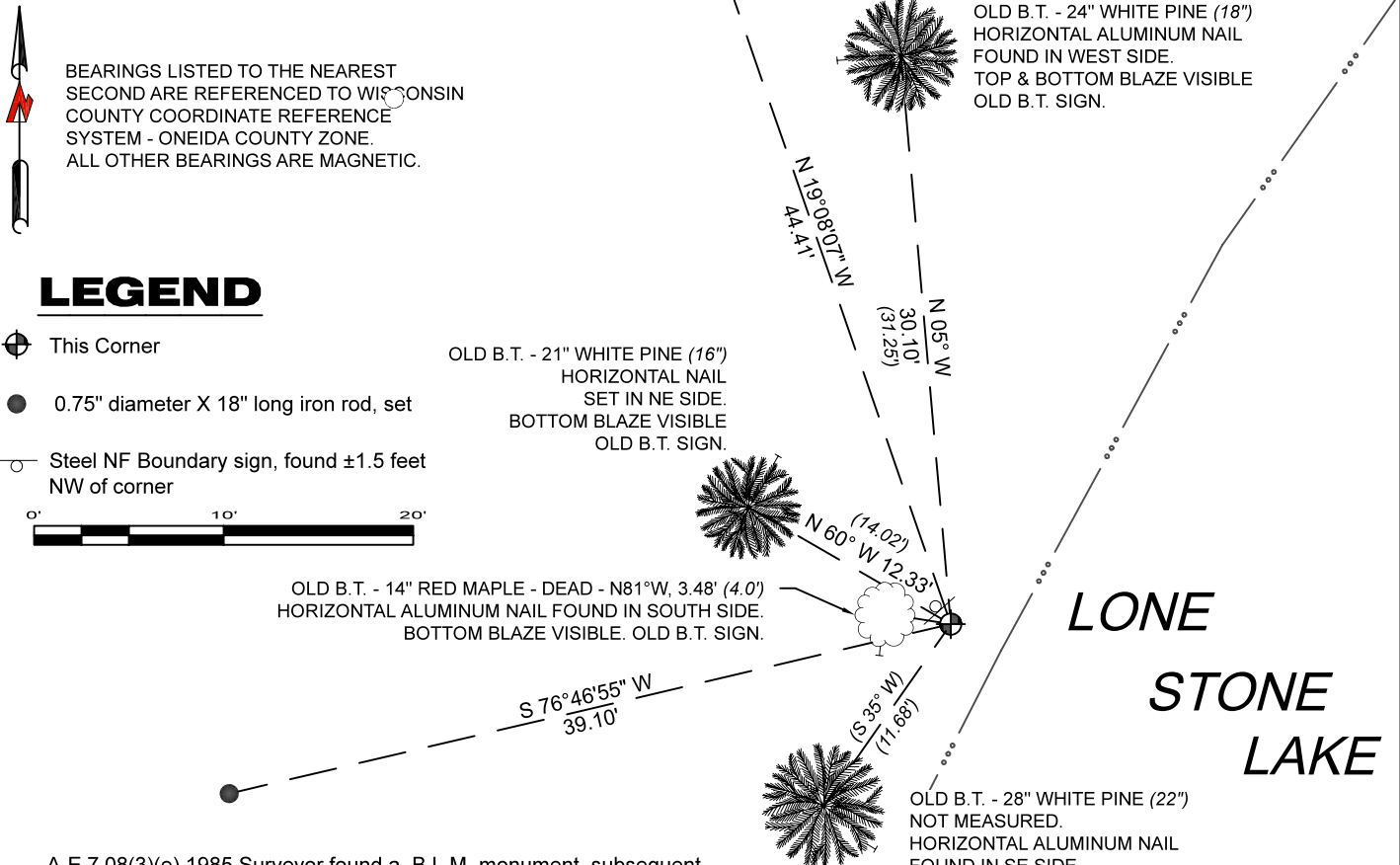
May 12, 2005 - Surveyor 2070 - Michael E. Weber - indicates this position as "G.L.O. brass capped concrete monument found in place" on Oneida County Map #C2316.

November 16, 2023 - I found a 5.5" diameter concrete monument with a 2.5" diameter brass cap stamped to identify the corner location. The monument is flush with grade and ±3 feet from the shore of Lone Stone Lake.

I also found 3 of Fisher's bearing trees alive and in good condition, and 1 dead and standing, and his steel sign posts.

I established 2 new witnesses as shown below.

A-E 7.08(3)(c)(d) Plan view of corner with references to at least 4 witness monuments.

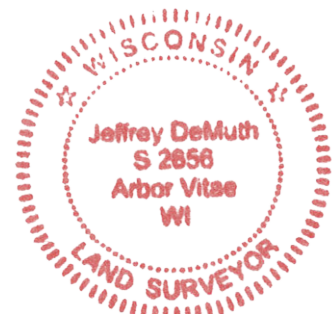


A-E 7.08(3)(e) 1985 Surveyor found a B.L.M. monument, subsequent surveyors found the same, as did I in 2023.

A-E 7.08(3)(f) I accept this monument as a FOUND PERPETUATED LOCATION of the corner.

A-E 7.08(3)(g)(h) This corner was not determined through lost-corner-proportionate methods.

A-E 7.08(3)(i) I, Jeffrey L. DeMuth, Professional Land Surveyor No. S-2656, hereby certify that the corner location on this record was determined by me or under my direction and control, and that this U.S. Public Land Survey Monument Record is correct and complete to the best of my knowledge, and belief.



*Jeffrey L. DeMuth*

November 28, 2023

SIGNATURE

DATE

43911110037