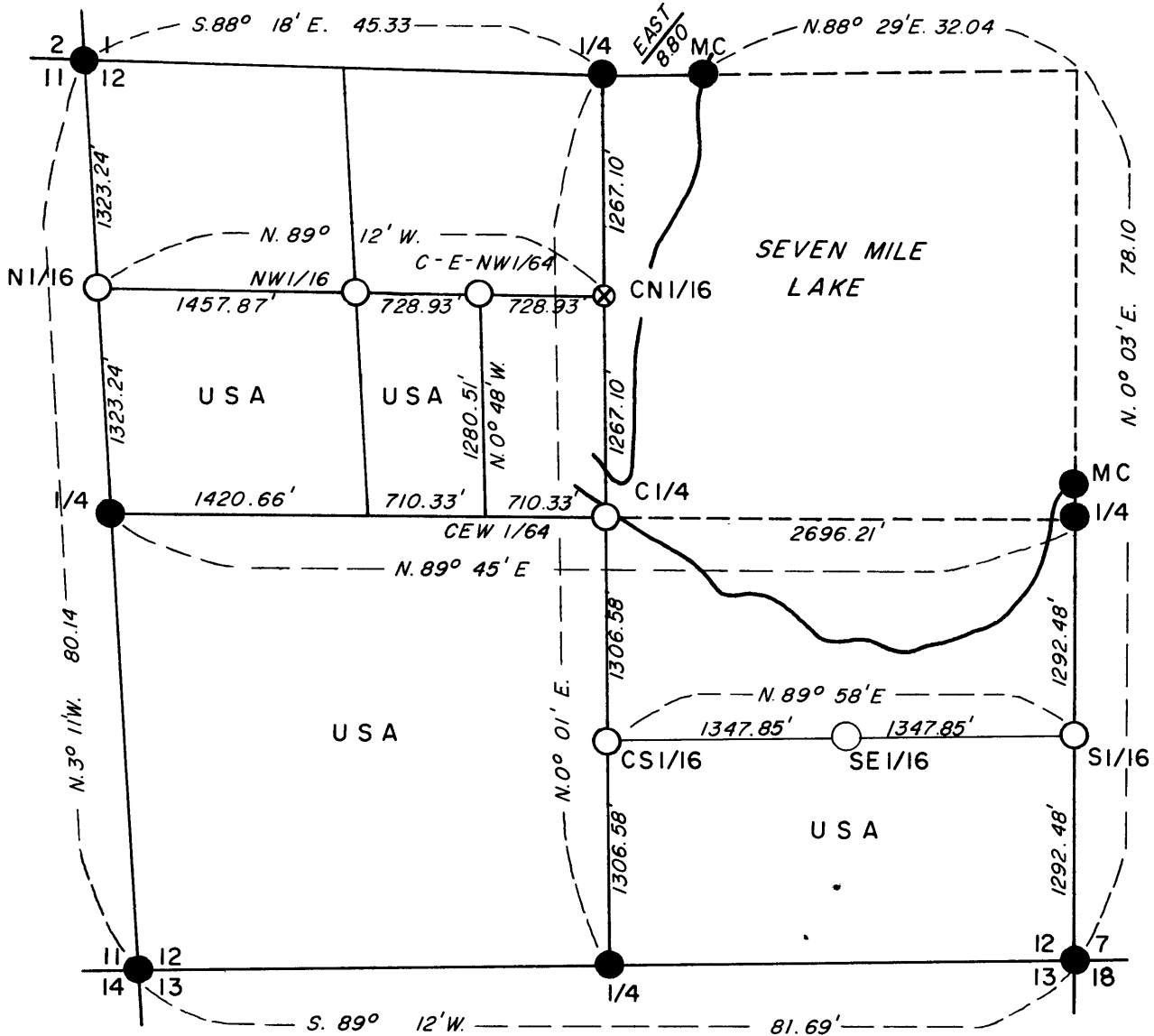
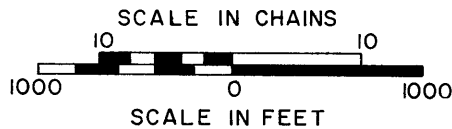


REGISTER'S OFFICE  
 Oneida County, Wis.  
 Received for Record the 12th day of  
January A. D. 19 76 at  
2:00 o'clock P.M. and recorded in  
100-118  
Doris Verage Buehn  
 Register

# PLAT OF SURVEY U.S. GOVERNMENT LAND

Being the SW1/4 NW1/4, SW1/4 SE1/4, SE1/4 SW1/4, W1/2 SW1/4,  
 South 40 acres of Lot 4 (SE1/4 SE1/4), West 40 acres of Lot 3 (NE1/4 SW1/4)  
 and West 20 acres of Lot 2 (W1/2 SE1/4 NW1/4) in Section 12  
 Township 39 North, Range 11 East Fourth Principal Meridian  
 COUNTY OF ONEIDA, STATE OF WISCONSIN



Note: Bearings and distances on outside perimeter of section are from 1941 dependent resurvey.

### LEGEND

- 1941 Dependent Resurvey Monument.
- Corner position marked by a 2 inch inside diameter by 5 foot long concrete filled galvanized iron pipe capped with a 3 inch diameter brass tablet stamped to identify corner.
- ⊗ Iron rod found in place.
- MC Meander Corner.
- USA U.S. Government Land.

3911010020	391112000	3911121000
3911010016	3911122020	3911110000
3911113000	3911122200	3911120020
3911123030	3911122000	3911120000
3911123020	3911121020	
	3911121010	
		3911020000

E-21 E-23  
 G-21 G-25  
 J-21 J-23 J-25  
 E-21 E-23

## PLAT OF SURVEY U.S. GOVERNMENT LAND

Being the SW1/4NW1/4, SW1/4SE1/4, SE1/4SW1/4, W1/2SW1/4,  
South 40 acres of Lot 4(SE1/4SE1/4), West 40 acres of Lot 3(NE1/4SW1/4)  
and West 20 acres of Lot 2(W1/2SE1/4NW1/4) in Section 12  
Township 39 North, Range 11 East Fourth Principal Meridian  
COUNTY OF ONEIDA, STATE OF WISCONSIN

### SURVEY NOTES

This survey was made by the U.S. Department of Agriculture, Forest Service, to establish and mark controlling interior subdivision corners of U.S. Government land.

The original Government subdivision survey of this township was made in 1859. A dependent resurvey of the east half of the township was made by the U.S. Department of Interior, General Land Office, in 1941. The corners of the dependent resurvey on the perimeter of section 12 were recovered as control for the subdivision survey of section 12. All U.S. Government land in section 12 was acquired in 1931.

### CORNERS ESTABLISHED

1. Center Quarter Corner - Position established on the intersection of the straight lines between opposing 1941 dependent resurvey quarter corners on the perimeter of section 12.  
Corner references:

Metal sign post	Southwest	1.0 feet
SE Corner Cabin	N. 38° W.	44.90 feet

2. South Sixteenth Corner to Sections 7-12, T39N, Rs.11-12E  
Position established at mid-point and on line between the southeast corner and the east quarter corner of section 12.  
Corner references:

Red Pine 4"	S. 24°26' E.	38.95 feet
White Pine 11"	S. 68°02' W.	25.44 feet
Cedar Sign Post	S.E.	1.4 feet
Center Road	North	15 feet

3. North Sixteenth Corner to Sections 11-12  
Position established at mid-point and on line between the northwest corner and the west quarter corner of section 12.  
Corner references:

Maple 9"	N. 32° W.	20.16 feet
White Birch 10"	S. 7° E.	22.07 feet
Metal Sign Post	S.E.	1.0 feet

4. Center South Sixteenth Corner  
Position established at mid-point and on line between the south quarter corner and the center quarter corner.  
Corner references:

Tamarack 5"	S. 13° E.	91.98 feet
Tamarack 4"	S. 50° W.	61.99 feet

## PLAT OF SURVEY U.S. GOVERNMENT LAND

Being the SW 1/4 NW 1/4, SW 1/4 SE 1/4, SE 1/4 SW 1/4, W 1/2 SW 1/4,  
South 40 acres of Lot 4 (SE 1/4 SE 1/4), West 40 acres of Lot 3 (NE 1/4 SW 1/4)  
and West 20 acres of Lot 2 (W 1/2 SE 1/4 NW 1/4) in Section 12  
Township 39 North, Range 11 East Fourth Principal Meridian  
COUNTY OF ONEIDA, STATE OF WISCONSIN

5. Southeast Sixteenth Corner

Position established on the intersection of the straight lines between opposing sixteenth corner positions on the perimeter of the southeast quarter of the section.

Corner reference:

Iron Pipe	N. 30°39.5' W.	21.92 feet
-----------	----------------	------------

6. Northwest Sixteenth Corner

Position established on the intersection of the straight lines between opposing sixteenth corner positions on the perimeter of the northwest quarter of the section.

Corner references:

White Spruce 14"	N. 88° E.	21.72 feet
Red Maple 13"	S. 64° W.	22.92 feet
Metal Sign Post	South	1.0 feet

7. Center East Northwest Sixty Fourth Corner

Position established at mid-point and on line between the northwest sixteenth corner and the center north sixteenth corner.

Corner references:

White Spruce 14"	West	253.36 feet
SW Corner Cabin	N. 72° E.	309.70 feet
Metal Sign Post	SW	1.2 feet
Edge Swamp	West	248 feet
Edge Swamp	East	245 feet

8. Center East West Sixty Fourth Corner

Position falls within a flowage.

The field survey notes and a copy of this plat of survey are on file in the Forest Supervisor's Office at Rhinelander, Wisconsin. A copy of this plat of survey is on file in the District Ranger's Office at Three Lakes, Wisconsin.

# PLAT OF SURVEY U.S. GOVERNMENT LAND

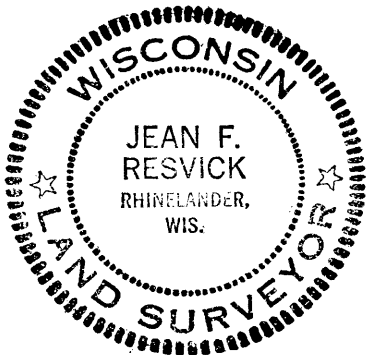
Being the SW1/4NW1/4, SW1/4SE1/4, SE1/4SW1/4, W1/2SW1/4,  
South 40 acres of Lot 4(SE1/4SE1/4), West 40 acres of Lot 3(NE1/4SW1/4)  
and West 20 acres of Lot 2(W1/2SE1/4NW1/4) in Section 12  
Township 39 North, Range 11 East Fourth Principal Meridian  
COUNTY OF ONEIDA, STATE OF WISCONSIN

### SURVEYOR'S AFFIDAVIT

STATE OF WISCONSIN )  
COUNTY OF ONEIDA ) SS

I, Jean F. Resvick, cadastral surveyor, U.S. Forest Service, and a registered land surveyor in the State of Wisconsin, hereby certify that I have surveyed and subdivided section 12, township 39 north, range 11 east, fourth principal meridian, State of Wisconsin.

The plat map and survey notes herewith are a correct representation of the land surveyed and divided. I have surveyed and subdivided said section in accordance with the rules for the survey of the public lands and with the statutes of the State of Wisconsin.



*Jean F. Resvick*

\_\_\_\_\_  
Cadastral Surveyor, U.S. Forest Service  
R.L.S. State of Wisconsin  
Certificate S-802

Date of Survey 1969, 1971

US PUBLIC LAND SURVEY MONUMENT RECORD

Index No. J-25

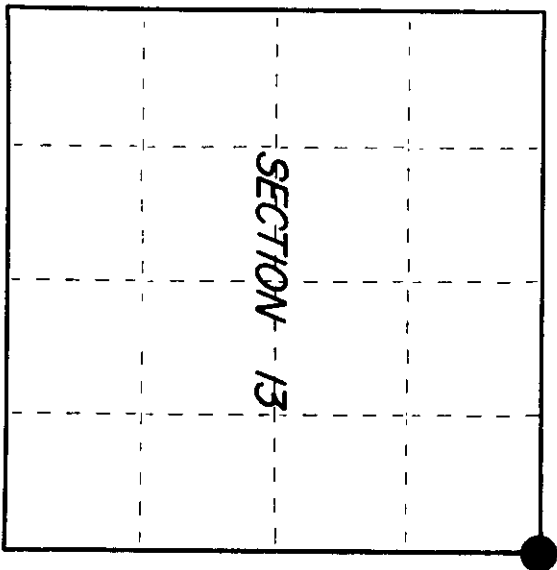
State of Wisconsin

County of Oneida } ss.

I, JAMES R. GROTHMAN, do hereby certify that on the 13th day of October, 1986, I found evidence of the Northeast corner of Section 13, Township 39, North, Range 11, East, Fourth Principal Meridian, as described hereon; and that from this evidence I established a new monument and accessories as described hereon to perpetuate the original location of this corner.

Resident witnesses:

None



○ = Corner monument restored.

History of original corner establishment. Original survey by Alfred Millard in 1858. Dependent resurvey by Hugh B. Crawford in 1941. At 39.04 chains point for corner falls at a local post. Set a concrete monument 24 inches long, 6 inch diameter, 18 inches in the ground with an iron post 23 inches long, 1 inch diameter embedded in center with brass cap marked:

T39N			
R11E		R12E	No accessories available, set the local cedar post 6 inches square
S12		S7	7 foot long, alongside monument.
S13		S18	

Description of corner evidence found:

Found G.L.O. monument as described with cedar post alongside.

Description of monument and accessories I established to perpetuate the original location of this corner.

Corner in good condition under the surface of the creek 8" this date. Blazed, scribed, painted, and posted the following bearing trees:

Red Pine	10"	N14°E	107.58 feet
White Pine	14"	N11°E	98.97 feet
Red Pine	7"	N6°E	95.31 feet

Dated at Portage, Wis. this 30 day of October, 1986.  
Signature: *James R. Grothman* Title: *PLS* Registration No. *1321*  
(County Surveyor, Registered Land Surveyor, or other duly authorized official)  
Office of Register of Deeds, County of Oneida, I hereby certify that the within instrument was filed in this office for record on the 13th day of October, 1986 at 10:00 o'clock A.M.

(Register of Deeds)

By: \_\_\_\_\_ Deputy

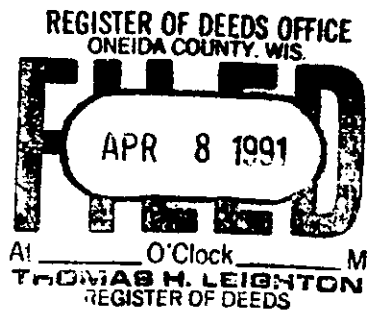
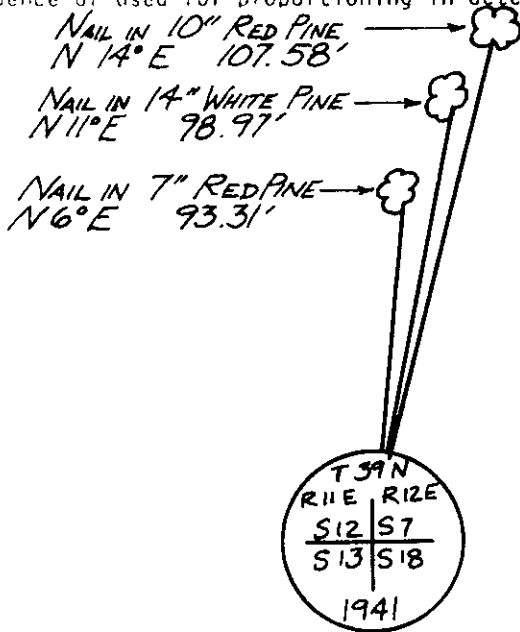
(c) Describe any material discrepancy between the location of the corner as restored or reestablished and the location of that corner as previously restored or reestablished by distance and direction. Show the discrepancy on the plan view drawing under (d), above. Show the distances between the corner as previously restored or reestablished and (1) the corner as restored or reestablished, and (2) to at least 2 of the witness monuments shown on the drawing in (d), above.

See drawing below

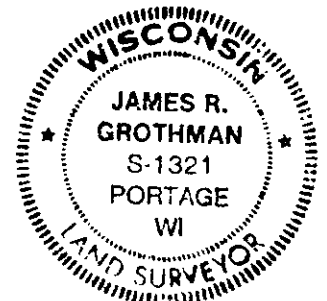
(f) Was the corner restored through acceptance of (1) an obliterated evidence location, or, (2) a found perpetuated location?

Corner was restored through acceptance of a found perpetuated location.

(g) Was the corner reestablished through lost corner proportionate methods? If so, show the method, including the directions and distances to other public land survey corners used as evidence or used for proportioning in determining the corner location?



Affix Land Surveyor Seal



JAMES R. GROTHMAN, Registered Land Surveyor No. 1321

(1) I, James R. Grothman (type or print name) certify that the corner location shown on this record was determined by me or under my direction and control and that this U.S. Public Land Survey Monument Record is correct and complete to the best of my knowledge and belief.

James R. Grothman 10/30/86  
Signature Date

Certificate ready for filing: N. Frank Aubrey 1/6/87  
District Ranger Date